

# caracole



## TRANQUIL CHAISE

m080-418-lh1-a

**COLLECTION:** MODERN GRACE

**DIMENSIONS:** 80W x 33D x 30H

A fresh mid-century addition to any setting, this unique chaise combines impressive comfort with contemporary style. It's versatility allows placement as a single chaise or a small scale sectional to create a modern seating area. Upholstered in a French grey micro-chenille, it features a double band of wood trim outlining its curvy profile. Channel tufting along its inback adds modern character, as does its asymmetrical shape. Accent pillows in chocolate velvet, rose quartz satin, and a contemporized leopard pattern create visual interest, while tapered round metal legs provide another layer of refinement.

**CONSTRUCTION:** Blendown cushion. | No sag seat. | Feather down pillows.

**FINISH:**



Zinc Oxide

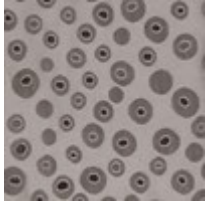


Lightly Brushed  
Chrome

**FABRIC:**



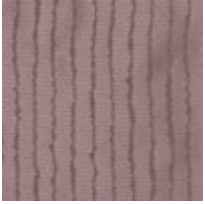
Body Fabric:  
2605-71CC



Pillow Fabric: 1-  
21" x 21" Pillow  
8281-29CC



1-17" x 17"  
Pillow 2595-  
79CC



1-24" x 18"  
Pillow 3171-  
18CC