

caracole



THE ARISTOCRAT DINING CHAIR

sig-41 6-283

COLLECTION: Signature Debut

DIMENSIONS: 22W x 25.5D x 42.5H

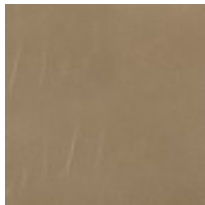
Haute couture finds its way into the equestrian elegance of this beautiful dining side chair. The high back of this softly winged chair is artfully tailored in a quilted warm taupe leather and beautifully appointed with a contemporary gold horseshoe pull positioned at the top of the chair back. The gently curved wood legs are tipped with gold metal ferrules in the front. This is a sumptuous chair that will pair elegantly with any dining table.

FINISH:



Piano_Black

FABRIC:



Fabric: 9085-75CC, 9085-75CC-Q