

# caracole



## BRIDGE THE GAP

uph-sofwoo-47a

**COLLECTION:** CARACOLE UPHOLSTERY

**DIMENSIONS:** 84.5W x 37D x 34.25H

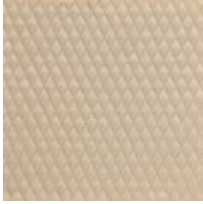
Classical details add everyday panache to this stylish sofa. A Go With The Grain finish enhances the natural beauty of the wood and draws your eye to the hand-carved fluting detail that defines the frame. The faux-ratchet arms gracefully splay outward, as does the back, leaving an artistic gap that adds interest to its sleek silhouette. The sofa oozes relaxed luxury with its diamond-quilted, cotton satin fabric in pastel parchment. A flared skinny leg and artistic array of pillows in misty jade and silk paisley are the luxurious details that make this sofa a chic addition to casually elegant spaces within your home.

**CONSTRUCTION:** Spring down cushion. | 8-way hand tied seat. | Feather down pillows.

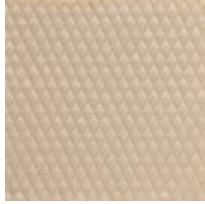
**FINISH:**



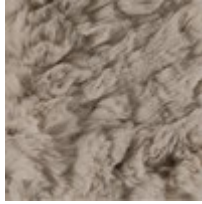
**FABRIC:**



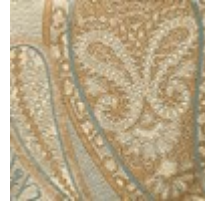
Body Fabric:  
2407-34CC



Pillow Fabric: 2-  
17" x 17" Pillows  
2407-34CC



1-17" x 17"  
Pillow 8123-  
79CC



1-17" x 12"  
Pillow Front  
5080-11CC,  
Back and Welt  
2407-34CC