

# caracole



## THE TRILOGY SIDE TABLE

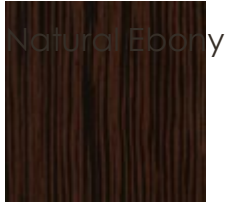
sig-418-418

**COLLECTION:** Signature Urban

**DIMENSIONS:** 30.5W x 19.25D x 16H

This Mid-century Modern-inspired side table pairs a high-sheen Ebony Macassar top with four hammered-brass needle legs. Use this table by itself or mix it with the other two Trilogy Side tables. Inspired by a series of stepping-stones, this trio of tables can be arranged in a variety of configurations that please the eye. Offering different shapes that are artfully made to work together, they create an engaging cocktail table solution for in front of a sofa. The solid brass needle legs have a hammered detail that creates shadows and interest to the legs. For added appeal, two of these artfully designed tables have four legs while the third features three leg—a playful detail that adds asymmetrical interest.

**FINISH:**



Natural Ebony



Urban Brass