

caracole



YOU'RE DREAMY

cla-016-022

COLLECTION: Caracole Classic

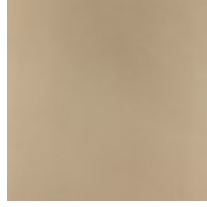
DIMENSIONS: 48W x 19D x 39H

Unusual Koto wood, finished in Champagne Shimmer, surrounds this modern single dresser with updated mid-Century appeal. The top drawer and bottom edge are cantilevered on this otherwise purely rectangular piece. Adding to its elegance are acrylic tapered legs. The four drawers are finished in Taupe Paint. The long, thin hardware is finished in Whisper of Gold metal with embedded Black Mother of Pearl. At 48 inches wide, this silhouette makes a statement on its own, or takes on added flair when two are paired underneath a fabulous piece of art.

FINISH:



Champagne
Shimmer



Taupe Paint