

# caracole



## THE MADISON CHAIR

sgu-418-021-a

**COLLECTION:** Signature Upholstery

**DIMENSIONS:** 43W x 41.75D x 31.75H

Smart and stylish, this classic chair has clean lines and a gently sloping track arm that makes it a timeless choice. It's sumptuously comfortable and upholstered in a winter-white, linen-blend textured fabric and layered with crisply tailored cushions and a contrasting toss pillow in an eye-catching cream and gold geometric pattern.

**CONSTRUCTION:** 8-Way hand tied seat. | Plush poly foam cushion. |

### FINISH:

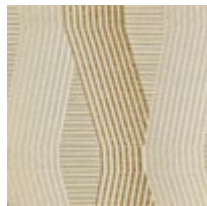


Tuxedo\_Black

### FABRIC:



Body Fabric:  
2644-87CC



Pillow Fabric: 1-  
23" x 11" Pillow  
8300-42CC