

# caracole



## LEADING EDGE

uph-017-014-a

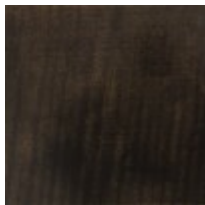
**COLLECTION:** CARACOLE UPHOLSTERY

**DIMENSIONS:** 93.5W x 40.5D x 31.5H

This sofa highlights contemporized styling with attention to details. Its sleek, curvaceous exposed wood frame in Dark Roast gives eye-catching appeal from any angle. Great as a pair to float in any room, this sofa is tailored to perfection and wears an uncommonly beautiful textured chenille cover in a heathered storm grey with a soft touch. Accent pillows feature a modern geometric rippled design in blended shades of soft mink and deeper mochas.

**CONSTRUCTION:** Plush poly foam cushion. | 8-Way hand tied seat. | Feather down pillows.

## FINISH:



Dark\_Roast

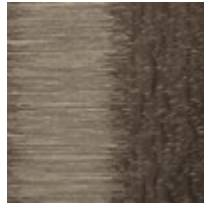
**FABRIC:**



Body Fabric:  
2570-93CC



Pillow Fabric: 2-  
20" x 20" Pillows  
2569-92CC



2-18" x 18"  
Pillows 5122-  
28CC