

caracole



PERFECTO

con-armcha-017

COLLECTION: Caracole Upholstery

DIMENSIONS: 28W x 28.5D x 48H

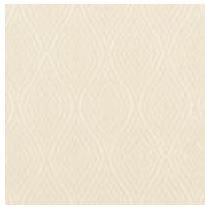
AVAILABLE IN CARACOLE COUTURE CUSTOM UPHOLSTERY PROGRAM This sculptural modern wing chair, with its statuesque tall back, is distinguished by its wide, squared-off upholstered top rail that swoops down the sides to low arms. The ivory fabric is adorned with dressy swirls of cream. Its Satin Ebony square-tapered front legs and graceful sabre rear legs make this black-and-white chair a real beauty.

FINISH:



Satin_Ebony

FABRIC:



Fabric: 3135-34CC