

caracole



DOUBLE DATE

uph-418-081-a

COLLECTION: Caracole Upholstery

DIMENSIONS: 73.75W x 37.5D x 40.5H

Rich with bespoke beauty, this perfectly sized settee is specially designed for making a statement. Its winged high back design provides an embracing comfort. The twilight grey cover is lightly propped with an eyelash decorated pillow. A distinctive wood trim rail details the elegant shape of this piece and rests atop the uniquely upholstered legs finished off by delicate ferrule tips.

CONSTRUCTION: Plush poly foam cushion. | 8-Way hand tied seat. | Feather down pillows.

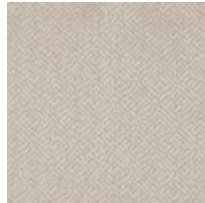
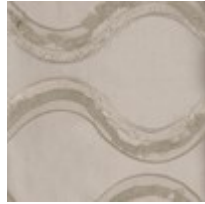
FINISH:

Ivory

FABRIC:



Body Fabric:
3168-71CC



Pillow Fabric: 2-
20" x 20" Pillows
8272-74CC with
Contrast Welt
3168-71CC