

caracole



TOAST OF THE TOWN

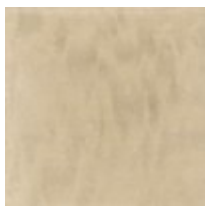
cla-418-211

COLLECTION: Caracole Classic

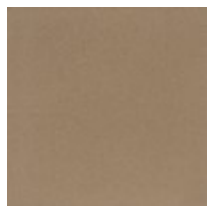
DIMENSIONS: 76W x 19D x 38.5H

Destined to be the "Toast Of The Town", this elegant case piece brings glamour home. Its distinctive design feels visually light yet significant. An exquisitely sophisticated Platinum Blonde finish brings its mottled Anegre alive while creating modern glamour. Behind each outside door you'll find two adjustable shelves while an adjustable shelf and tray drawer lie behind its center doors. Intriguing door hardware adds a jewelry-like decorative element, as do its four metal feet finished in Golden Shimmer Paint.

FINISH:



Platinum
Blonde



Golden
Shimmer

