

caracole



A-DOOR IT

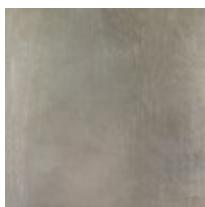
cla-417-682

COLLECTION: Caracole Classic

DIMENSIONS: 76W x 19D x 39H

A classic reinvented, this glamorous half-moon-shaped, four-door credenza makes organization effortless. Its classically updated aesthetic is achieved with Fumed Figured Tiger Maple finished in Smoke and accented with Taupe Silver Leaf. A cream stone inset top encourages buffet serving. Adjustable shelves can be found inside, as well as a drawer with silver tray and two additional drawers. Drawer bottoms silkscreened with a trellis pattern add to the elegant appeal of its stylish interior.

FINISH:



Smoke

Taupe Silver
Leaf

Platinum