

caracole



LATTICE ENTERTAIN YOU

uph-chawoo-61a

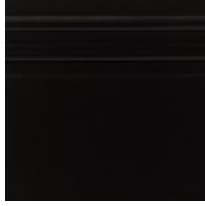
COLLECTION: Caracole Upholstery

DIMENSIONS: 28.5W x 34.75D x 29.25H

AVAILABLE IN CARACOLE COUTURE CUSTOM UPHOLSTERY PROGRAM Elegant embroidered fabric was the starting point for this exposed wood frame, influencing the open fretwork design on each arm panel. The Tuxedo Black finish is further set off by matte brass plated metal accents and a lush textured fabric. Float this chair in a room in which you are able to take in all the sides, as we think it's stunning from every angle.

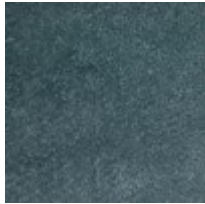
CONSTRUCTION: Ultra plush down cushion. | 8-way hand tied seat. | Feather down pillow.

FINISH:



Tuxedo_Black

FABRIC:



Body Fabric:
2285-52CC



Pillow Fabric: 1-
20" x 20" Pillow
2285-52CC