

# caracole



## THE MADISON SOFA (LARGE)

sgu-418-013-a

**COLLECTION:** Signature Urban

**DIMENSIONS:** 102.5W x 41.75D x 31.75H

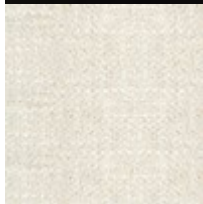
Smart and stylish, this classic track arm sofa has clean lines and a gently sloping track arm that makes it a timeless design choice that's also supremely comfortable. Upholstered in a winter-white linen-blend fabric, it features crisply tailored pillows in a contrasting satin geometric pattern in rich tones of cream and gold. Comfortably entertaining a crowd has never been easier than with this tailored, large-scale sofa featuring three seat cushions and three tapered sets of back cushions.

**CONSTRUCTION:** 8-Way hand tied seat. | Plush poly foam cushion.

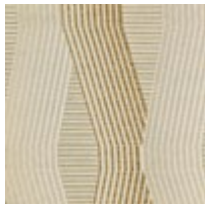
**FINISH:**

Tuxedo\_Black

FABRIC:



Body Fabric:  
2644-87CC



Pillow Fabric: 3-  
20" x 14" Pillows  
8300-42CC