

caracole



DIAMOND DASH

uph-018-012-a

COLLECTION: CARACOLE UPHOLSTERY

DIMENSIONS: 94.5W x 37.25D x 29H

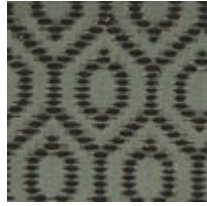
A one-of-a-kind beauty, this distinctive sofa captures the essence of Art Deco brought to life with Mid-century Modern design. Inspired by nature's influences, it features generously scaled arms and the clean lines of bench seating upholstered in a richly textured fabric with a stylish mix of sapphire blue contrasted by bittersweet chocolate. An eye-stopping diamond quilt pattern adds visual dimension, with each tuft punctuated by a metal cufflink-inspired bar tack. Stylish metal legs peek out from underneath and feature an open wishbone shape highlighted in Champagne Gold. Fashionable accent pillows with an embroidered geometric pattern in shades of soft peacock blue and chocolate brown make a coordinated fashion statement, and a fun, faux mink fur kidney pillow completes the sofa's stylish appeal.

CONSTRUCTION: Springdown cushion. | 8-Way hand tied seat. | Feather down pillows.

FABRIC:



Body Fabric:
2659-13CC



Pillow Fabric: 2-
21" x 21" Pillows
8309-13CC



1-22" x 14"
Pillow 8307-
78CC