

# caracole



## POP A TOP

uph-418-051-a

**COLLECTION:** Caracole Upholstery

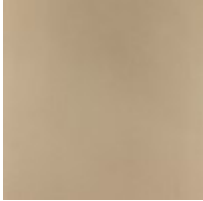
**DIMENSIONS:** 20.5W x 20.5D x 20H

When form meets function, there's never been a more glamorous option. An elegant addition to a bedroom or living space, this stylish storage ottoman features a lift-off top and is finished inside with Taupe Paint for added appeal.

Fashionable acrylic cabriole legs give it distinctive character while mirroring its curvy shape. Perfect for books, magazines or a favorite throw blanket—you'll wonder how you ever lived without this multifunctional ottoman.

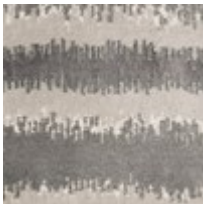
**CONSTRUCTION:** Plush poly foam cushion.

**FINISH:**



Taupe\_Paint

**FABRIC:**



Body Fabric:  
8276-89CC