

caracole



BEST FOOT FORWARD

uph-017-038-a

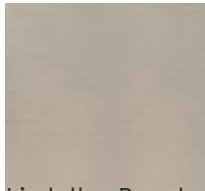
COLLECTION: Caracole Upholstery

DIMENSIONS: 35W x 41.5D x 26.5H

The epitome of bold sophistication, this alluring chair boasts strong linear lines and is tailored to perfection in a buff-colored velvet. Its seat back and outside arms feature a stunning custom, diamond-shape quilted pattern. Eye-stopping in its elegance, this distinctive piece also features shaped metal feet finished in a Lightly Brushed Chrome. A fashionable cut-velvet accent pillow in tones of buff and platinum grey completes the look.

CONSTRUCTION: Spring down cushion. | 8-Way hand tied seat. | Feather down pillow.

FINISH:

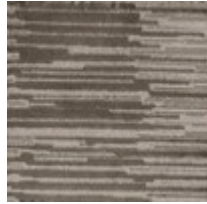


Lightly_Brushed_Chrome

FABRIC:



Body Fabric:
2301-34CC



Pillow Fabric: 1-
19" x 19" Pillow
8254-71CC