

# caracole



## VECTOR CHAIR

m100-419-232-a

**COLLECTION:** Modern Edge Upholstery

**DIMENSIONS:** 30.25W x 33.75D x 27.25H

If you want to create a room unlike any other, this iconic chair is a must-have. Eye-catching from every angle, it creates a distinctive presence while providing remarkable comfort. Its one-of-a-kind stylized look starts with a stainless-steel frame in Whisper of Gold that encapsulates a plush interior upholstered in charcoal velvet. Destined to be the focal point of the room, its eye-catching look is modern and memorable.

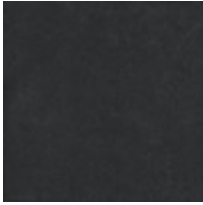
**CONSTRUCTION:** Blendown cushion. | No sag seat. | Feather down pillow.

**FINISH:**

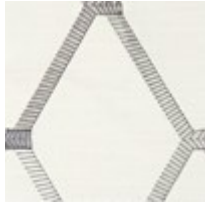


Whisper\_of\_Gold

**FABRIC:**



Body Fabric:  
2680-70CC



Pillow Fabric: 1-  
18" x 18" Pillow  
8326-70CC