

# caracole



## **BLENDED FAMILY**

met-sofa-01a

**COLLECTION:** MODERN METRO

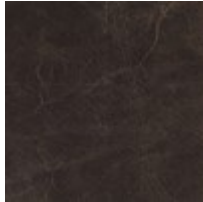
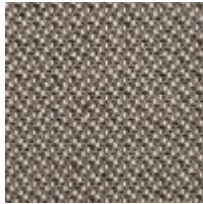
**DIMENSIONS:** 81.25W x 36.5D x 33H

Launch a great urban oasis starting with our tailored, mid-size sofa. Sleek, lines and vertical tufts ensure it will always look neat and stylish. The sofa's architectural bones are highlighted by an on-trend, gunmetal detail that penetrates the arm and becomes the front and back leg. It's dressed in a complex; nubby basket-weave in hues of soft gray and dusty white with a defining olive leather linear welt. The combination of fabric on one side and leather on the other allows you to flip the seat to your preferred side. Two throw pillows add comfort and one in a kicky hot pink adds a blast of fun.

**CONSTRUCTION:** Blendown supreme cushion. | No sag seat. | Feather down pillows.

**FINISH:**

Tungsten  
FABRIC:



Pillow Fabric: 2-  
19" x 19" Pillows  
2438-53CC

1-24" x 14"  
Pillow 2417-  
07CC

Body Fabric:  
2437-79CC,  
Body Welt and  
Top of Seat  
Cushion 9084-  
91CC Top  
Grain Leather