

caracole



THE LOW DOWN

con-closto-076

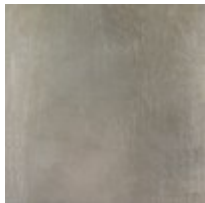
COLLECTION: Caracole Classic

DIMENSIONS: 55W x 15D x 18.25H

Add a little luster to a cozy den or a bedroom with this small scale entertainment console. At 55-inches it's the perfect size for most flat screen televisions. Clean lines and streamlined proportions define this modern console and a beautiful hand-rubbed Taupe Silver Leaf finish ensure that it will go with any decor. For larger great rooms or a media rooms, two or more consoles can be adjoined to accommodate larger 80-inch televisions.

CONSTRUCTION: Shelf behind doors: 26"W x 13"D. | Area without shelf: 26"W x 13"D x 15"H.

FINISH:



Taupe_Silver_Leaf