

caracole



WONDER-FULL

cla-419-011

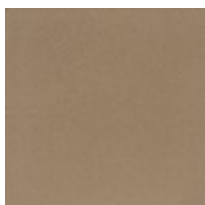
COLLECTION: Caracole Classic

DIMENSIONS: 72W x 20.5D x 38H

With shapely curves and a rich mix of materials, it's no wonder this dresser is a designer favorite. Its six spacious drawers ensure you have a place to store everything while its fresh design combines classic and modern influences. Wearing a Golden Shimmer finish, it boasts a bronze mirrored top, end panels and post overlays. Dazzling jewelry-like drawer pulls and shaped legs add an element of glamour to complete the look of this unexpected beauty.

CONSTRUCTION: Leg: 9" H | 2 Sides of 3 Drawers: 30.5 x 13.25 x 5.25

FINISH:



Golden_Shimmer