

# caracole



## HOLD ME UP

uph-418-131-a

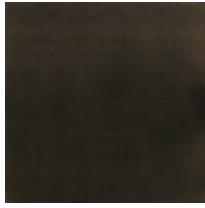
**COLLECTION:** Caracole Upholstery

**DIMENSIONS:** 37W x 36.5D x 27H

A definitive example of timeless sophistication, this stunning chair is pure joy. Upholstered in a neutral Congo taupe fabric and accented by Almost Black legs and Champagne Gold metal accents, it features an accent pillow in shades of bittersweet chocolate. Use it alone or in pairs to create a sophisticated seating area with unforgettable elegance

**CONSTRUCTION:** Springdown cushion. | 8-Way hand tied seat. | Feather down pillow.

**FINISH:**



Almost-Black

**FABRIC:**



Body Fabric:  
Inside and Top  
Rail 2598-44CC,  
Outside and  
Bottom Rail  
3173-35CC



Pillow Fabric: 1-  
18" x 18" Pillow  
8275-91CC