

.05

Maarten Van Severen, 2004



.05

Although the cantilever chair has been a success story for over eighty years, .05 is the first model whose uncompromising form and flexible comfort surpass the archetypal chair without back legs designed by Mart Stam in 1926.

The sleek, linear shape of .05 is its aesthetic hallmark, while its construction provides for a comfortable seat. Made of resilient polyurethane integral foam, the shell adapts to the body. When the sitter leans back, the upper part of the backrest yields slightly – a pleasant sensation created by the integrated leaf springs. Together with the typical flexing effect of the cantilever base, this makes .05

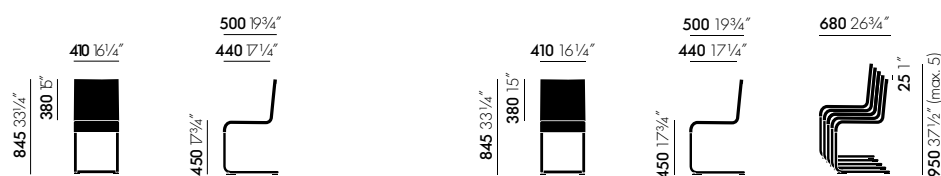
surprisingly comfortable – a quality that is fully appreciated only through use.

The cantilever base of .05 is made of stainless steel, making the chair suitable for outdoor use as well. The .05 chair is also available in a stacking version.

Materials

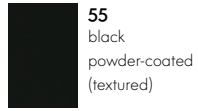
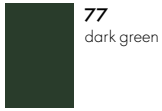
- **Seat shell:** cantilever chair with seat shell made of integral skin polyurethane foam. Shell with upholstered effect, self-supporting on a tubular stainless steel frame. Flexible backrest with integrated leaf springs.
- **Base:** stackable (max. 5 chairs) or non-stackable base in stainless steel with satin finish or powder coating. Fitted with plastic glides for carpet or felt glides for hard floors.
- **Use:** suited for outdoor use.
- **Note:** special additives retard the fading of colours due to UV radiation. However, if the chair is exposed to sunlight for prolonged periods, the colour may change over time. We recommend limited exposure to sunlight.

DIMENSIONS (in accordance with EN 1335-1)



.05, non-stacking

.05, stacking



Seat shell

Base

