

Eames Plastic Chair

Charles & Ray Eames, 1950

vitra.



Eames Plastic Chair

The Eames Plastic Chairs are renewed versions of the legendary Fiberglass Chair. As the very first industrially produced plastic chair, it was originally developed by the Eameses in collaboration with Zenith Plastics for the 'Low-Cost Furniture Design' competition organised by the Museum of Modern Art. In the current versions made of polypropylene, these chairs provide even greater comfort.

The wide selection of bases makes it possible to use the chairs in a variety of settings: from the dining room or home office to the garden. Different colours and upholstery versions provide many options for combining individual chairs to meet various needs.

In 2015, Vitra adapted the seat geometry and height of the Eames Plastic Chairs to today's requirements and also expanded the selection of colours with six new shades.

The Eames Plastic Armchair is complemented by the Eames Plastic Side Chair without armrests.



Charles & Ray Eames

Charles and Ray Eames are counted among the most important figures of twentieth-century design. Their work spans the fields of furniture design, filmmaking, photography and exhibition design. Vitra is the sole authorised manufacturer of Eames products for

Europe and the Middle East. When you own an Eames product made by Vitra, you know it is an original.

1	Eames Plastic Armchair	10-11	Eames Plastic Chair – Colours	16	Colours and materials
2-8	Areas of use	12-13	Eames Plastic Chair – Bases		
9	Cover materials	14-15	Dimensions		



Dining at home – or eating out

At home as well as in restaurants and cafeterias, the many configuration options make it possible to find just the right chair for any furnishing scheme or interior environment.

Materials DAW

- **Base:** wooden base in various shades of maple or honey-toned ash, stained and lacquered finish. Steel rod cross struts in basic dark. (DAW = Dining Height Armchair Wood Base)

Materials DSW

- **Base:** non-stackable wooden base in various shades of maple or honey-toned ash, stained

and lacquered finish. Steel rod cross struts in basic dark. (DSW = Dining Height Side Chair Wood Base)

- **Origin of wood:** ash (*Fraxinus excelsior*) and maple (*Acer platanoides*) from Western Europe and/or Poland.

Materials DAR

- **Base:** wire base with cross struts, chrome-plated or powder-coated finish. The powder-coated version is suitable for outdoor use. (DAR = Dining Height Armchair Rod Base)

Materials DSR

- **Base:** non-stacking four-legged wire base with cross struts. The powder-coated version is suitable for outdoor use. (DSR = Dining Height Side Chair Rod Base)

Materials DAX

- **Base:** four-legged tubular steel base, chrome-plated or powder-coated. The powder-coated version is suitable for outdoor use. (DAX = Dining Height Armchair X-Base)

Materials DSX

- **Base:** non-stacking four-legged tubular steel base. The powder-coated version is suitable for outdoor use. (DSX = Dining Height Side Chair X-Base)
- **Note:** special additives retard the fading of colours due to UV radiation. However, if the chair is exposed to sunlight for prolonged periods, the colour may change over time. We recommend limited exposure to sunlight.



DAW



DSW



DAR



DSR



DSX



DSX



Outdoor

Versions of the Eames Plastic Chair and Wire Chair with non-upholstered seat shells and powder-coated bases are also suited for use in outdoor settings. They not only provide a striking visual accent on terraces and balconies but also make it possible to enjoy the chair's exceptional comfort under the open sky.

Materials DAR

- **Base:** wire base with cross struts, chrome-plated or powder-coated finish. The powder-coated version is suitable for outdoor use. (DAR = Dining Height Armchair Rod Base)

Materials DSR

- **Base:** non-stacking four-legged wire base with cross struts. The powder-coated version is suitable for outdoor use. (DSR = Dining Height Side Chair Rod Base)

Materials DAX

- **Base:** four-legged tubular steel base, chrome-plated or powder-coated. The powder-coated version is suitable for outdoor use. (DAX = Dining Height Armchair X-Base)

Materials DSX

- **Base:** non-stacking four-legged tubular steel base. The powder-coated version is suitable for outdoor use. (DSX = Dining Height Side Chair X-Base)
- **Note:** special additives retard the fading of colours due to UV radiation. However, if the chair is exposed to sunlight for prolonged periods, the colour may change over time. We recommend limited exposure to sunlight.



DSR



DAR



DSX



DAX



Living

The rocking chair RAR (Rocking Armchair Rod Base), the LAR (Lounge Height Armchair Rod Base) and the elegant DAL (Dining Armchair La Fonda Base) are expressive solitary pieces that cut a fine figure in a wide range of interior environments.

Materials RAR

- **RAR base:** wire base with cross struts, chrome-plated or powder-coated, solid maple runners. (RAR = Rocking Armchair Rod Base)
- **Origin of wood:** maple (*Acer platanoides*) from Western Europe and/or Poland.

Materials LAR

- **LAR base:** wire base with cross struts, chrome-plated or powder-coated finish. Seat height 256 mm. (LAR = Lounge Height Armchair, Rod Base)

Materials DAL

- **Base:** La Fonda base in polished die-cast aluminium. (DAL = Dining Height Armchair La Fonda Base)



DAL



DAL



LAR



RAR



RAR



RAR



Home office and studio

The PACC and PSCC versions feature a height-adjustable five-star base on castors with both spring and swivel functions. The chairs offer pleasant comfort in office environments where work tasks require shorter periods of sitting.

Materials PACC

- **Base:** five-star base in polished die-cast aluminium with double castors in basic dark. (PACC = Pivot Armchair Cast Base on Castors)

Materials PSCC

- **Base:** five-star base in polished die-cast aluminium with double castors in basic dark. (PSCC = Pivot Side Chair Cast Base on Castors)



PACC



PACC



PACC



PSCC



PSCC



PSCC



Multipurpose seating

As flexible seating solutions in auditoriums, conference facilities, media rooms, assembly halls and similar spaces, the Eames Plastic Chairs have proven their worth over decades of use: the models DSS and DSS-N can be stacked, and DSS can also be linked in rows.

Materials DSS

- **Base:** chrome-plated tubular steel base, DSS with ganging bracket. (DSS = Dining Height Side Chair Stacking Base)
- **Stacking:** Version without upholstery can be stacked up to 8 chairs on the floor or on a stacking trolley. Version with seat and full upholstery: up to 5 chairs can be stacked on the floor, up to 6 chairs on a stacking trolley.

Materials DSS-N

- **Base:** chrome-plated tubular steel base, DSS-N without ganging brackets. (DSS-N = Dining Height Side Chair Stacking Base Non-Link)
- **Stacking:** Version without upholstery can be stacked up to 8 chairs on the floor or on a stacking trolley. Version with seat and full upholstery: up to 5 chairs can be stacked on the floor, up to 6 chairs on a stacking trolley.



DSS-N

DSS, row with ganging brackets

Stacking

Stacking trolley

The practical stacking trolley facilitates the quick set-up and storage of chairs used for temporary functions.

**Ganging brackets**

With the ganging brackets, the chairs can be easily hooked together to keep them in their intended place.

**Row and seat numbers**

The models DSS and DSS-N can be labelled with a row number as well as a seat number.





Waiting areas

Beam supports in different lengths are available for the Eames Plastic Chairs, accommodating two to five seat shells. Thanks to the robust seat shells and the indestructible base construction, these configurations are suited for all types of waiting areas including those subject to intense use.

Materials Eames Plastic Chair on beam

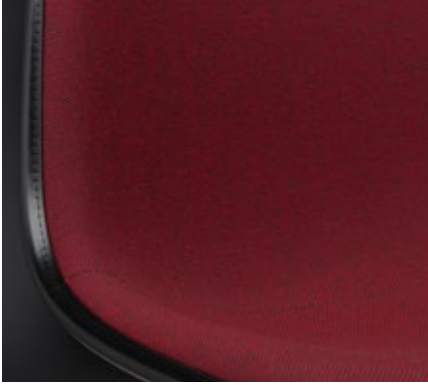
- **Table unit:** black solid core material (560 x 430 mm).
- **Base:** two-legged beam support in different lengths accommodates 2 to 5 chair shells or table units. T-beam: epoxy-coated in basic dark, polished aluminium legs. Fitted with plastic glides for carpet or anti-skid felt glides for hard floors.



Eames Plastic Side Chair on beam



Eames Plastic Armchair on beam



Hopsak

Hopsak is an expressive, flat plain-weave fabric made of polyamide. The duotone colours offer a multitude of design possibilities in high-contrast, brightly hued or subtle combinations of warp and weft threads. Highly durable and robust, Hopsak can be used in private interiors as well as public areas.

Hopsak is available in 35 colours.



CARE INSTRUCTIONS

Cover fabrics

To care for cover fabrics, vacuum regularly with an upholstery nozzle to remove dust and lint. Fresh spots and spills can usually be removed by blotting immediately with an absorbent, lint-free sponge or cloth. To prevent remaining traces of a ring mark, work from the edge of the spot towards the centre.

To avoid mineral residue from remaining on dark fabrics after drying, we recommend the use of household-grade distilled water for dampening. Stubborn stains can be treated by brushing dry stains lightly with a soft brush (for example, a clothes brush). Depending on the type of stain, the use of solvents may be necessary. In such cases, it is essential to consult a professional cleaner. Under no circumstances should cover fabrics be rubbed vigorously. Please be sure to consult a specialist before using any solvent-based cleaning product.

Plastics

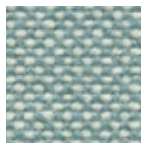
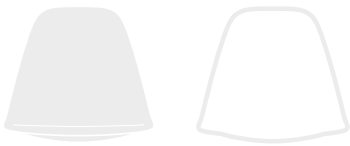
Vitra plastics are very robust, with excellent shape retention and colourfastness, making them resistant to a variety of chemicals and other substances. Furthermore, special additives retard the fading of colours due to UV radiation. However, the exposure of a chair to sunlight for prolonged periods may cause the colour to change over time. For this reason, limited exposure to sunlight is advisable. Please use a soft, damp, non-abrasive cloth to clean plastic surfaces and dry gently. For stain removal, we recommend the use of a mild, commercially available cleaning agent. Always avoid abrasive cleaning agents including powders and pastes as well as aggressive 'all-purpose' cleaners containing alcohol, which will damage the surface.

SEAT SHELLS AND UPHOLSTERY EASILY COMBINED

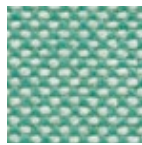
With a total of 14 shell colours, 35 upholstery shades and many different bases, the collection of Plastic Side Chairs and Plastic Armchairs offers around 100,000 possible combinations. This vast array of options makes it possible to colour-coordinate chairs to suit the specific interior.

Each shell colour can be paired with the Hopsak palette to define individual combinations.

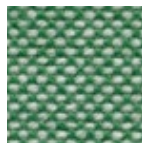
1. Duotones containing a light thread make a lovely pairing with light-coloured shells and white welting.



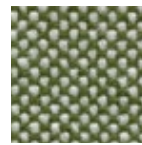
81
ice blue/ivory



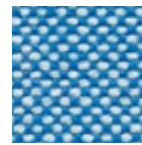
85
mint/ivory



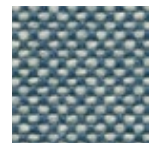
20
green/ivory



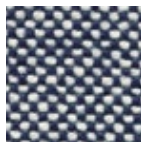
87
ivory/forest



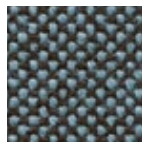
83
blue/ivory



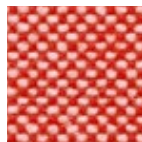
25
sea blue/ivory



74
dark blue/ivory



82
ice blue/moor brown



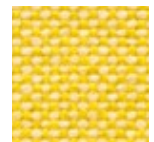
67
poppy red/ivory



88
cognac/ivory



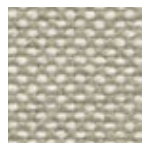
18
mustard/ivory



16
yellow/ivory



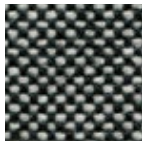
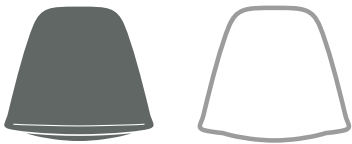
17
nude/ivory



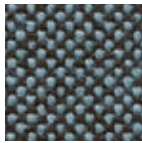
79
warm grey/ivory



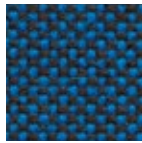
2. Duotones with a dark thread form a stunning combination with a dark shell and black welting.



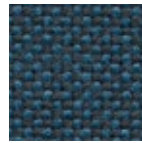
23
nero/ivory



82
ice blue/moor brown



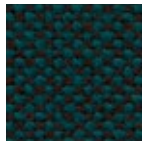
84
blue/moor brown



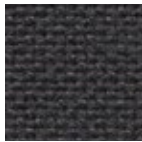
22
sea blue/dark grey



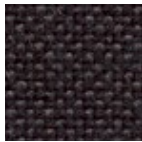
77
nero/forest



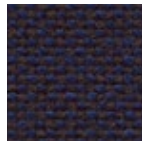
73
petrol/moor brown



05
dark grey



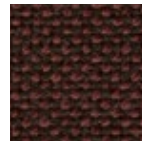
24
dark grey/nero



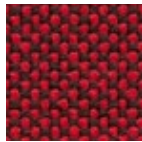
75
dark blue/moor brown



66
nero



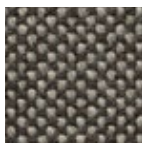
76
marron/moor brown



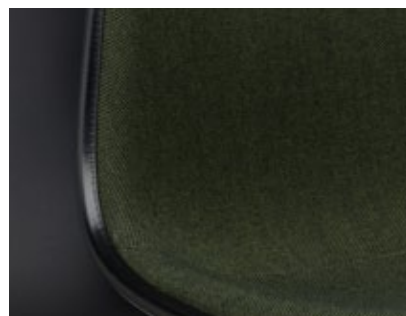
62
red/moor brown



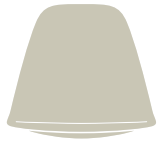
19
mustard/dark grey



80
warm grey/moor brown



Each shell colour can be paired with the Hopsak palette to define individual combinations. The user can also pick up the colour of the shell in the fabric, or play with duotones and create accents.



11
pebble



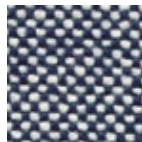
79
warm grey/ivory



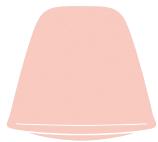
17
nude/ivory



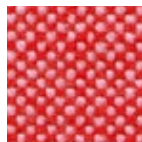
24
light grey



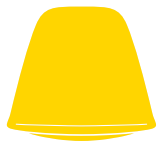
74
dark blue/ivory



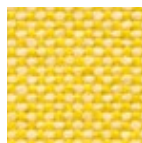
41
pale rose



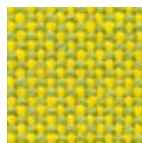
68
pink/poppy red



26
sunlight



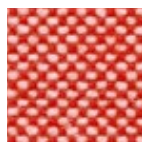
16
yellow/ivory



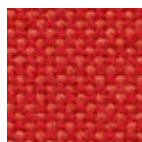
71
yellow/pastel green



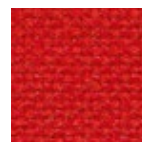
03
poppy red



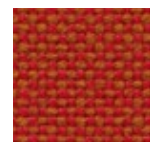
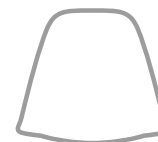
67
poppy red/ivory



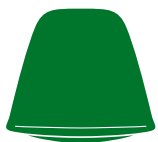
65
coral/poppy red



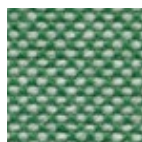
63
red/poppy red



96
red/cognac



42
green

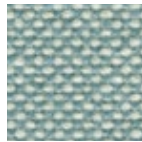
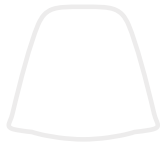


20
green/ivory





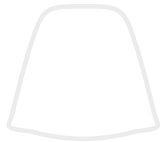
23
ice grey



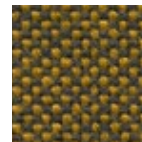
81
ice blue/ivory



34
mustard



18
mustard/ivory



19
mustard/dark grey



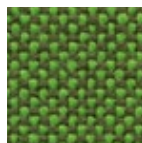
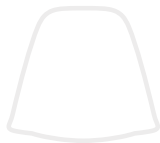
43
rusty orange



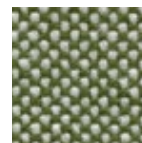
88
cognac/ivory



48
forest



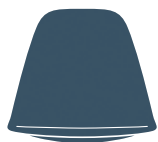
70
grass green/forest



87
ivory/forest



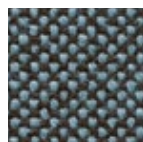
77
nero/forest



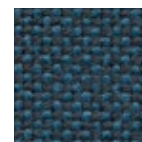
83
sea blue



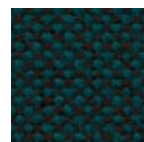
25
sea blue/ivory



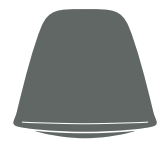
82
ice blue/moor brown



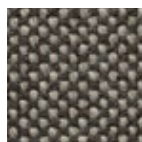
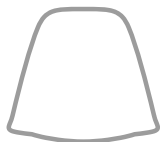
22
sea blue/dark grey



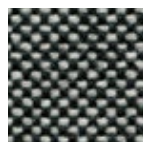
73
petrol/moor brown



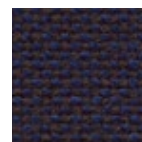
56
granite grey



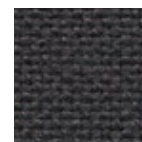
80
warm grey/moor brown



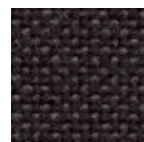
23
nero/ivory



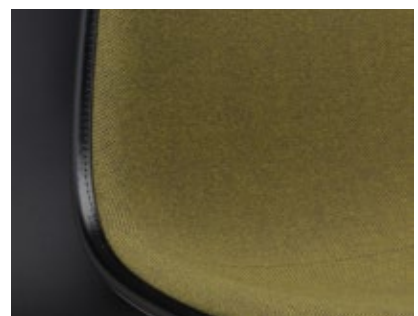
75
dark blue/moor brown



05
dark grey



24
dark grey/nero



The Authenticity of the Vitra Eames Collection

vitra.

In design, the word “original” can be used if the legal and ideational requirements are fulfilled.

The term means that a design has been manufactured by the legitimate producers, regardless of the time of its creation, in the spirit of the designer and that it is therefore authentic.

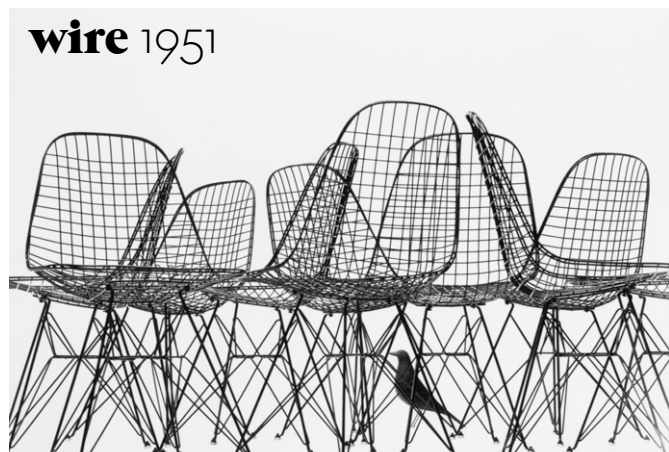
A prerequisite for having the status of an original is, in fact, the relationship between the designer (or their descendants) and the manufacturer of the products. It has a legal and an ideational component. In order to be able to speak of an original, the designer must transfer the right to produce to the manufacturer. Anyone who manufactures a design without this legal basis is making use of a third party’s property. That applies not only to the manufacturer but also to the consumer who purchases this product.

Just as important is the ideational relationship between designer and manufacturer. It expresses itself within the close collaboration on all production issues. The copyist does not have this relationship: the extent to which the copy deviates from the original idea, whether that is from lack of knowledge, sloppiness or cost-saving, remains unknown.

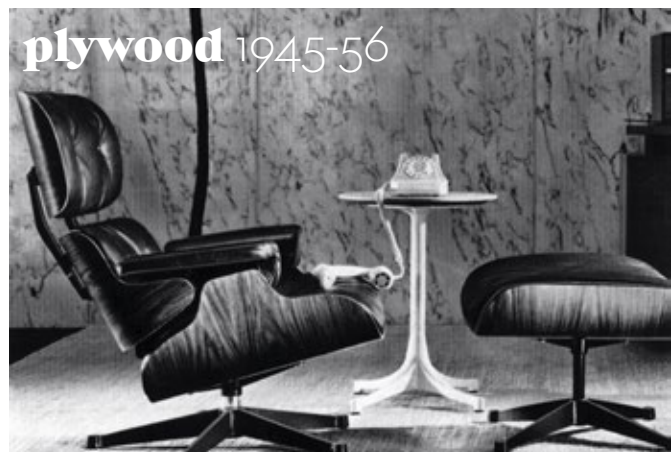
Rolf Fehlbaum



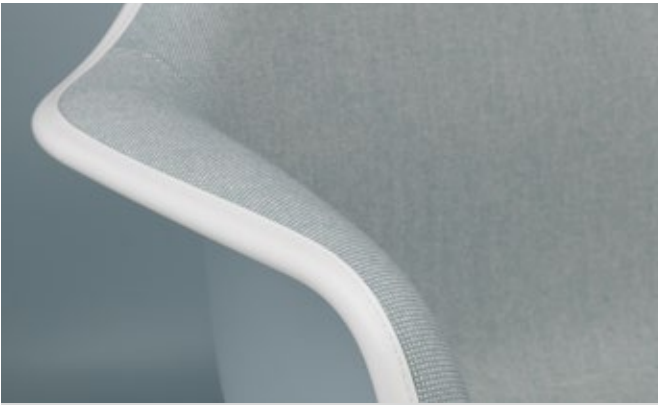
plastic 1948-61



wire 1951



plywood 1945-56



Authenticity

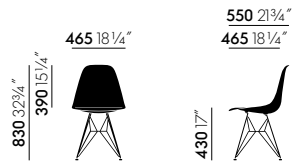
In close cooperation with the Eames Office, which represents Charles & Ray Eames' family, Vitra guarantees that each Eames Plastic Chair gives the exact design experience of comfort, aesthetics and quality that Charles & Ray Eames intended for the user – a feeling that only the original can offer.



Eames Demetrios



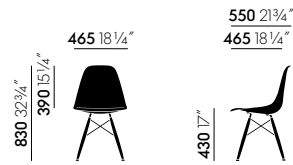
aluminium 1958-69



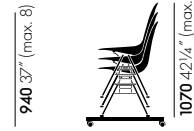
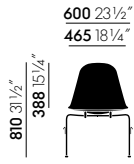
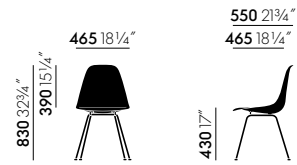
DSR



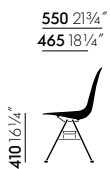
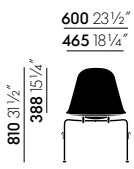
DSW



DSX



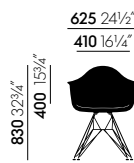
DSS



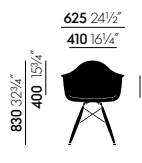
PSCC



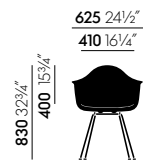
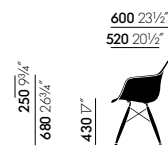
DSS-N



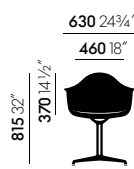
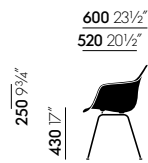
DAR



DAW



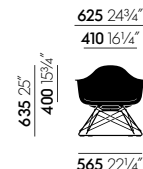
DAX



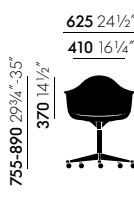
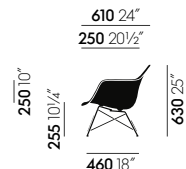
DAL



RAR

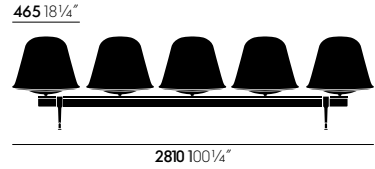
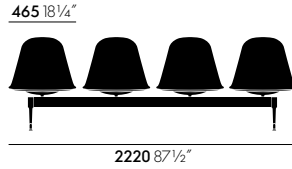
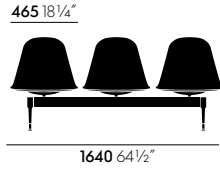
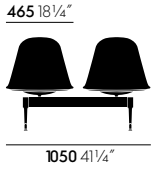
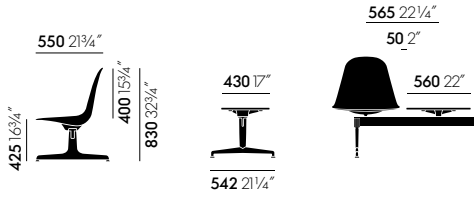


LAR

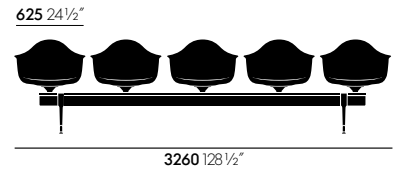
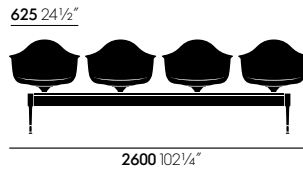
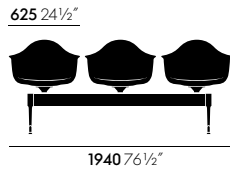
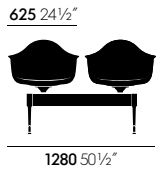
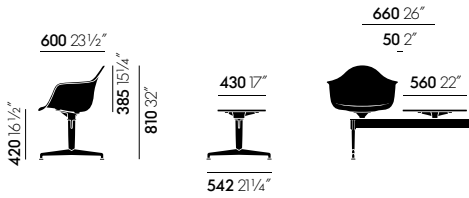


PACC





Eames Plastic Side Chair on beam



Eames Plastic Armchair on beam



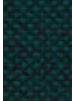

















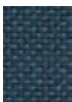



Hopsak Home/Office, F60














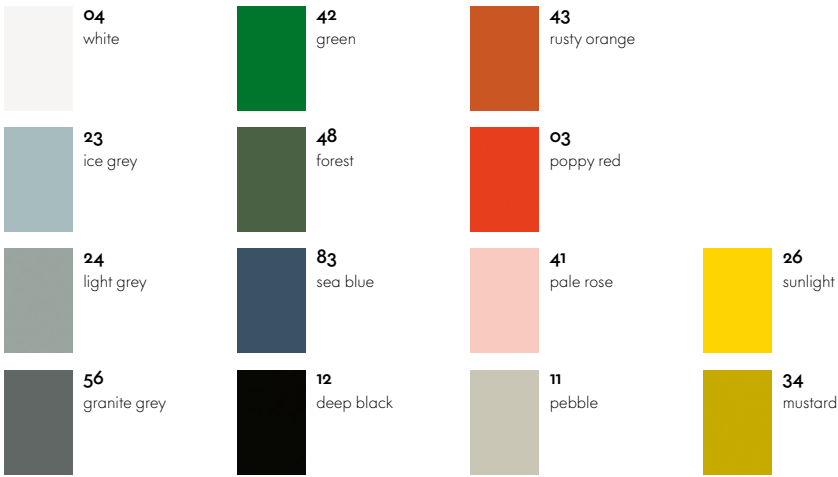
Hopsak is an expressive, flat plain-weave fabric made of polyamide. The duotone colours offer a multitude of design possibilities in high-contrast, brightly hued or subtle combinations of warp and weft threads. Highly durable and robust, Hopsak can be used in private interiors as well as public areas.

Hopsak is available in 35 colours.

Material	100% polyamide
Weight	550 g/m ² (16.2 oz/y ²)
Width	127 cm +/- 2 cm (50")
Abrasion resistance	200,000 Martindale
Fastness to light	Type 6
Pilling	Grade 4-5
Fastness to rubbing	Grade 4-5 dry and wet

 71 yellow/pastel green	 85 mint/ivory	 73 petrol/moor brown	 84 blue/moor brown	 75 dark blue/moor brown	 23 nero/ivory
 69 grass green/ivory	 20 green/ivory	 81 ice blue/ivory	 83 blue/ivory	 05 dark grey	 80 warm grey/moor brown
 70 grass green/forest	 86 mint/forest	 82 ice blue/moor brown	 25 sea blue/ivory	 24 dark grey/nero	 76 marron/moor brown
 87 ivory/forest	 77 nero/forest	 22 sea blue/dark grey	 74 dark blue/ivory	 66 nero	 62 red/moor brown

 96 red/cognac	 67 poppy red/ivory	
 63 red/poppy red	 88 cognac/ivory	 16 yellow/ivory
 65 coral/poppy red	 17 nude/ivory	 18 mustard/ivory
 68 pink/poppy red	 79 warm grey/ivory	 19 mustard/dark grey

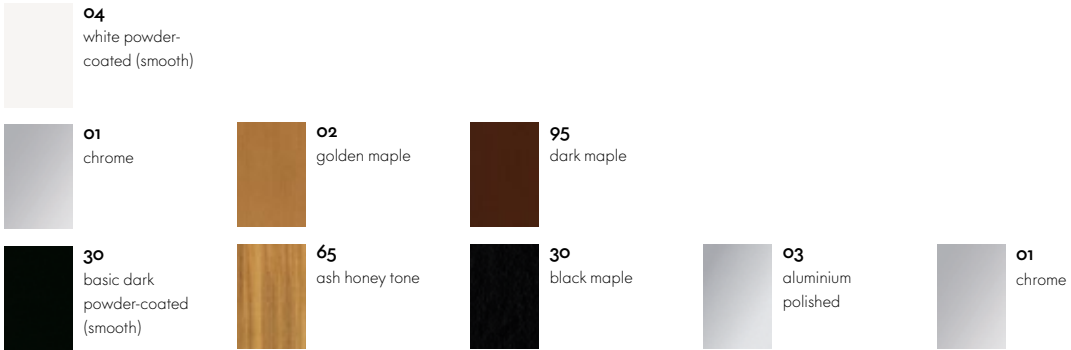


Seat shell



Piping

BASES



DAR, DAX, DSR,
DSX, LAR

DSW, DAW

DAL, PACC, PSCC

DSS, DSS-N



Base RAR

Rocking skids RAR

