

# Mariposa Sofa

Edward Barber & Jay Osgerby, 2014

vitra.



## Mariposa Sofa, Iroko cover fabric

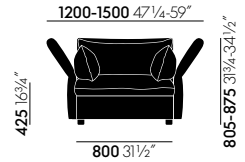
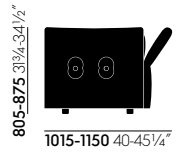
The Mariposa Sofa radiates spacious cosiness and yet has an understated feel due to its well-balanced proportions. Its pleasantly soft upholstery provides extraordinary comfort: the user sinks into its sea of cushions with not a hard surface to be felt. The sophisticated adjustment mechanism for the side and back rests also offers the option to adjust the sitting or lying position individually. Though designed as a two-seater, the Mariposa Sofa offers more than enough room for three people.

The name of the sofa hints at its sophisticated features: the flexible design of the slender yet softly yielding arm and back rests brings to mind “mariposa”, Spanish for butterfly.

### Materials

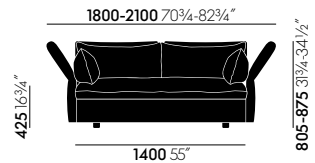
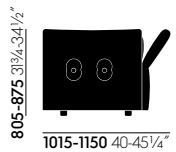
- **Structural frame:** webbed metal frame with polyurethane foam.
- **Seat cushions:** polyurethane and visco foams with chamber cushion overlay. Chamber cushion overlay filled with feathers and PU rods.
- **Back and armrest cushions:** chamber cushion filled with stripped-quill feathers and PU rods.
- **Covers:** removable.
- **Seat height:** 425 mm (280 mm with applied load, measured in accordance with EN 1335-1).
- **Glides:** plastic glides with levelling adjustment.
- **Applications:** recommended for home use only.

|     |                               |      |                                    |       |                       |
|-----|-------------------------------|------|------------------------------------|-------|-----------------------|
| 1   | Mariposa                      | 6-12 | Cover materials                    | 15    | Care instructions     |
| 2-3 | Collection overview           | 14   | Useful facts about cover materials | 16-17 | Configurations        |
| 4   | Functional sofa               |      |                                    | 18-19 | Vitra Home Collection |
| 5   | Useful facts about upholstery |      |                                    |       |                       |



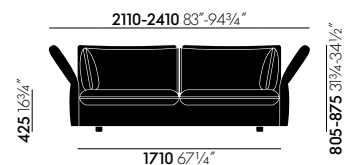
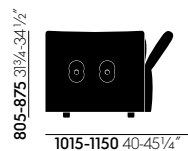
**Love Seat**

The Mariposa Love Seat is ideal for small apartments or in combination with one of the Mariposa Sofas. Its sumptuous upholstery makes this generously dimensioned seat the perfect chair to lounge in.



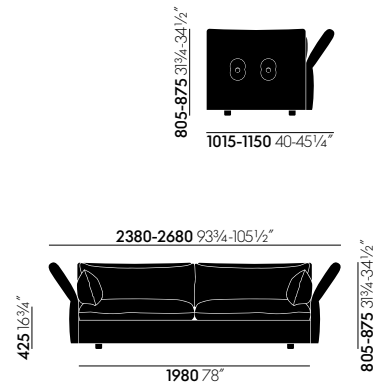
**2-seater**

The Mariposa Two-Seater offers total comfort and is ideal for urban dwelling where space is at a premium. Though compact, the seat cushions stretching along its full length give it an elegant and generous feel.



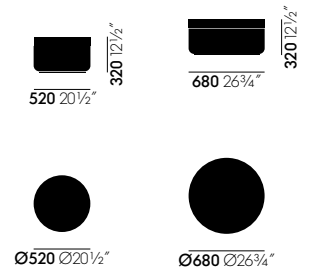
**2½-seater**

The Mariposa Two-and-a-Half-Seater is our mid-size offering which – belying its name – provides plenty of seating room in comfort for up to three people whilst being economical on space. The two-and-a-half-seater features two soft seat cushions.



**3-seater**

The generous Mariposa Three-Seater offers lots of space and soft comfort for the whole family.



**Ottoman**

Matching the soft shapes of the sofa, two ottomans combine beautifully with the various sofa sizes. They feature a distinctive seam exactly aligned to the height of the cushion seams on the sofa, emphasising their place in the Mariposa family.



**Edward Barber & Jay Osgerby**

Edward Barber and Jay Osgerby studied architecture as fellow students at the Royal College of Art in London. Since that time, their collaborative work has probed the interface between industrial design, furniture design and architecture.

The Mariposa Sofa does not openly display its functional features: the slim side and back elements can be individually adjusted – continuously and silently – from an upright position to an outward angle of approximately 30° and back again. The resistance is calibrated in such a way that the supporting panels stay in place when the sitter leans back in a normal manner, but will adjust to the desired angle when intentional pressure is applied. This flexibility allows individual users to determine the position that is most comfortable for them.

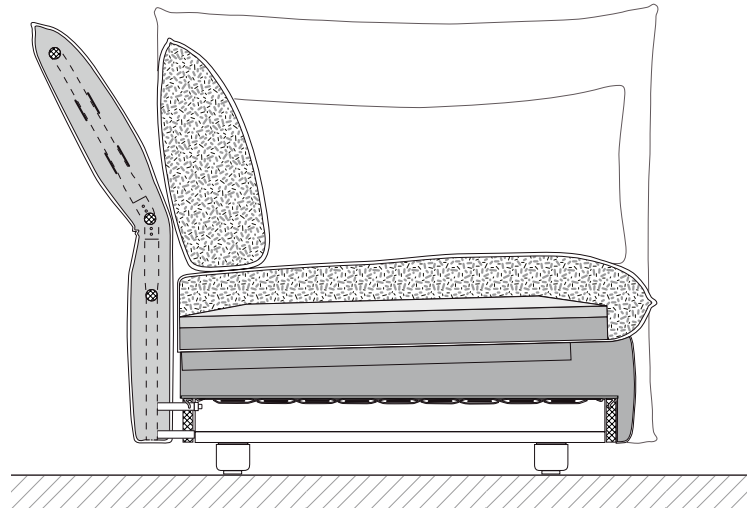
Thanks to the unusual depth of the seat surface, two people can sit on either end and comfortably face each other – to carry on a conversation or share a cosy spot for reading. With these special features, the Mariposa Sofa offers an inviting place to prop up your feet and relax.



Function of the arm- and backrest elements

---





Sectional drawing of the upholstery construction

The padding on the webbed frame is made of foam in two different densities with varying degrees of firmness. The detachable seat cushions have a visco and polyurethane foam core surrounded by a chamber cushion filled with feathers and polyurethane rods. This upholstery technique allows users to sink in, providing comfort in both seated and reclined positions.

The individually adjustable side and back panels consist of a hinged frame with upholstery webbing, covered with polyurethane foam and fibre padding.

The loose back and armrest cushions are chamber cushions, filled with stripped-quill feathers and polyurethane rods.

**USEFUL FACTS ABOUT UPHOLSTERY**

Vitra has over fifty years of experience in the production of upholstered furniture. Premium materials, skilled craftsmanship and high quality standards at Vitra are a guarantee for long-lasting products. In Vitra's own test centre, our upholstered furnishings are regularly subjected to a wide range of tests that far exceed common standards.

**Care instructions:**

Exposure to direct sunlight should be avoided, since ultraviolet rays can cause cover materials to fade.

To retain the original fullness and shape of your sofa, cushions should be regularly shaken and plumped.

Folds and creases from sitting can be prevented in all types of upholstery by smoothing the cover material after use.

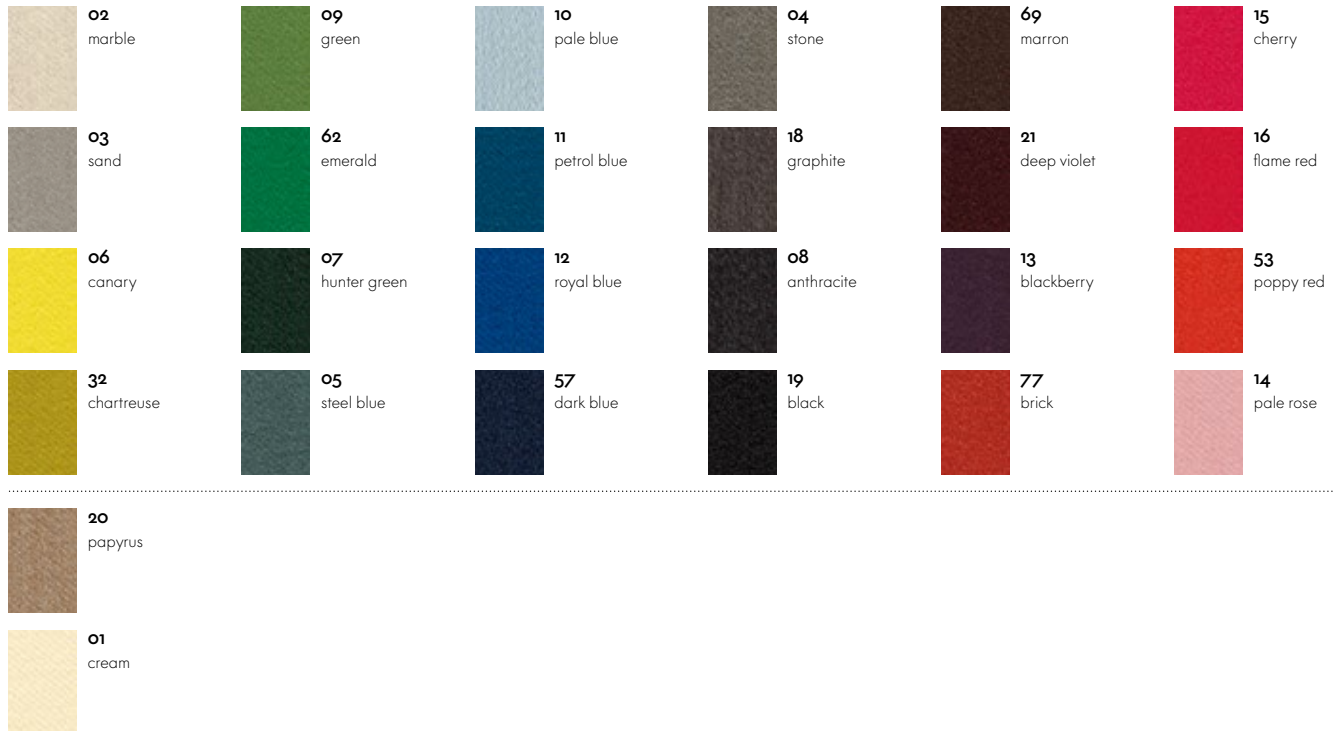
# Aura Home, F100



The woollen textile Aura has a classic satin (atlas) weave with a fine, soft surface. This fabric is distinguished by a supremely soft feel, lustrous sheen and smooth even surface. The solid and mixed colours feature dynamic, highly saturated tones made possible by wool's excellent dyeability.

Aura is available in 26 colours.

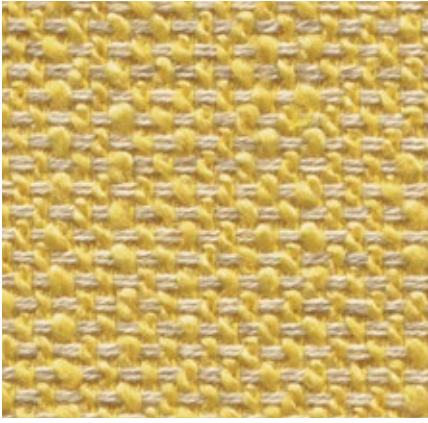
|                     |  |
|---------------------|--|
| Material            | 3% polyamide,<br>97% new wool                  |
| Weight              | 390 g/m <sup>2</sup> (11.5 oz/y <sup>2</sup> ) |
| Width               | 144 cm +/- 2 cm (56")                          |
| Abrasion resistance | 20,000 Martindale                              |
| Fastness to light   | Type 5   |
| Pilling             | Grade 3-4                                      |
| Fastness to rubbing | Grade 3-4 dry and wet                          |





# Corsaro Home, F8o

**vitra.**



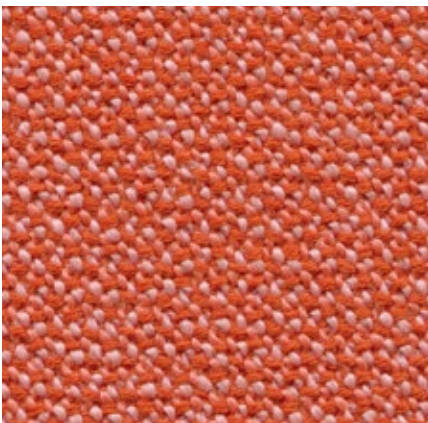
Corsaro is a sophisticated combination of fine and coarse yarns that give the fabric a natural look with a Mediterranean flair. The two-tone and three-tone shades interwoven with several novelty yarns add particular vibrancy to large surface areas.

Corsaro is available in 13 colours.

|                     |   |
|---------------------|---|
| Material            | 5% polyamide, 10% cotton, 46% acrylics, 5% linen, 20% wool, 14% polyester |
| Weight              | 450 g/m <sup>2</sup> (13.3 oz/y <sup>2</sup> )                            |
| Width               | 140 cm +/- 2 cm (55")   |
| Abrasion resistance | 35,000 Martindale   |
| Fastness to light   | Type 5  |
| Pilling             | Grade 3-4   |
| Fastness to rubbing | Grade 3-4 dry and wet   |



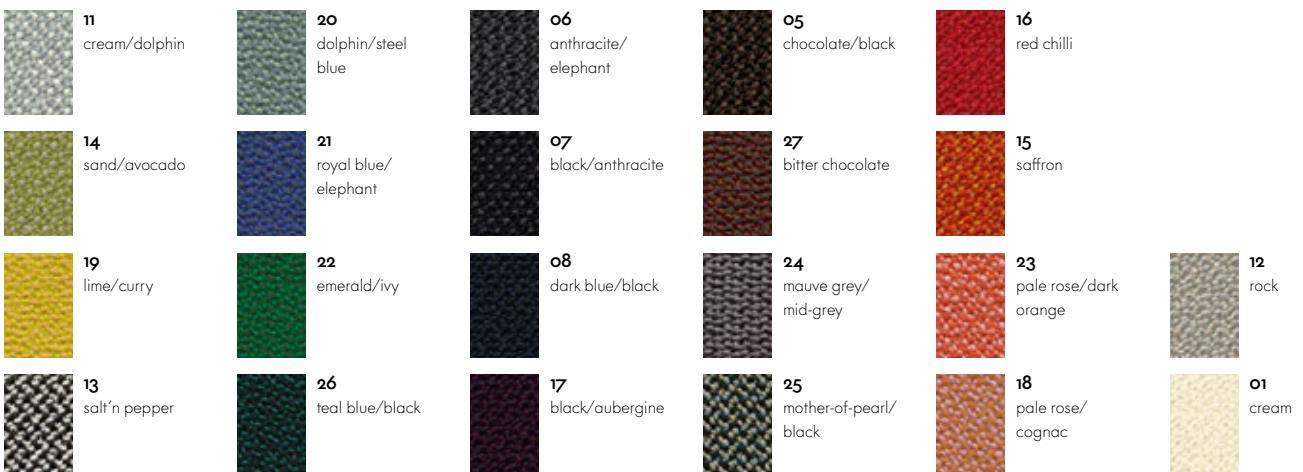
# Credo Home/Office, F12o



Credo is a durable woollen fabric made of premium worsted yarn with a pleasant feel. The two- and three-tone colours give this fabric a characteristic structure and vibrant appearance. Credo allows for an effective exchange of heat to ensure comfortable thermal conditions for the sitter. The fabric can also be used in office environments.

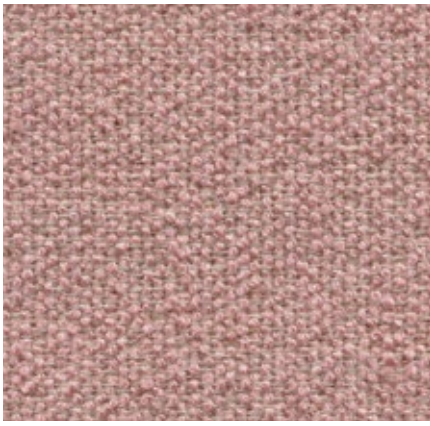
Credo is available in 22 colours.

|                     |  |
|---------------------|--|
| Material            | 5% polyamide, 95% new wool                     |
| Weight              | 640 g/m <sup>2</sup> (18.9 oz/y <sup>2</sup> ) |
| Width               | 145 cm +/- 2 cm (57")                          |
| Abrasion resistance | 100,000 Martindale                             |
| Fastness to light   | Type 6   |
| Pilling             | Grade 4  |
| Fastness to rubbing | Grade 4-5 dry and wet                          |



# Dumet Home, F8o

**vitra.**



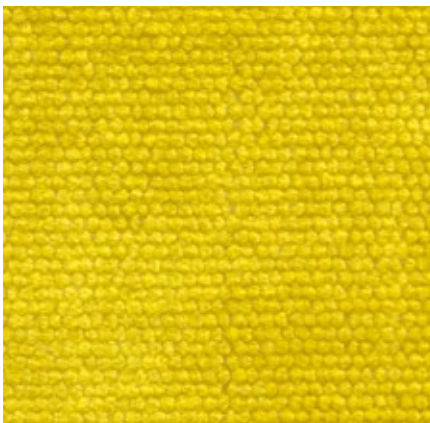
Dumet is a cotton blend in a plain weave with a lively appearance. The natural mixed tones create an elegant look with an Italian flair. Dumet is soft and cool to the touch.

Dumet is available in 20 colours.

|                     |  |
|---------------------|--|
| Material            | 9% polyamide,<br>46% cotton, 8%<br>linen, 22% wool,<br>15% rayon |
| Weight              | 485 g/m <sup>2</sup> (14.3 oz/y <sup>2</sup> )                   |
| Width               | 147 cm +/- 2 cm (57")  |
| Abrasion resistance | 40,000 Martindale  |
| Fastness to light   | Type 5   |
| Pilling             | Grade 3-4  |
| Fastness to rubbing | Grade 3-4 dry<br>and wet   |



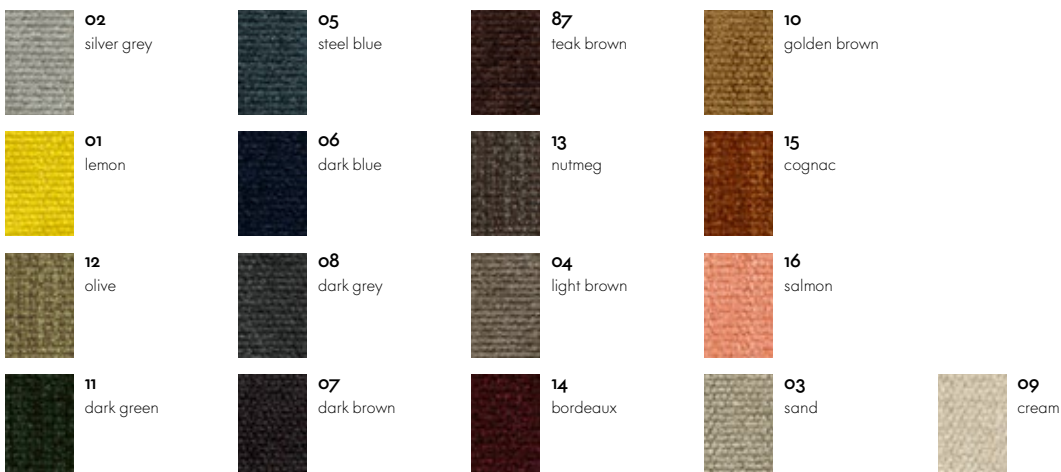
# Iroko 2 Home, F8o



Iroko 2 is a soft, flat woven fabric made with chenille yarn. The piles in the yarn give the weave a lively surface texture with an inviting, velvety touch. The fabric's cotton fibres provide excellent cooling properties.

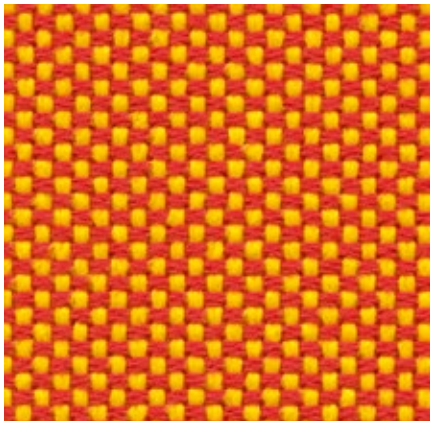
Iroko 2 is available in 17 colours.

|                     |  |
|---------------------|--|
| Material            | 32% cotton,<br>48% acrylics,<br>20% polyester  |
| Weight              | 700 g/m <sup>2</sup> (20.6 oz/y <sup>2</sup> ) |
| Width               | 152 cm +/- 3 cm (60")                          |
| Abrasion resistance | 40,000 Martindale                              |
| Fastness to light   | Type 5   |
| Pilling             | Grade 3-4                                      |
| Fastness to rubbing | Grade 3-4 dry<br>and wet                       |





# Laser Home/Office, F40



With its distinctive woven structure, Laser makes a robust and striking cover fabric. The varied palette offers a wide selection of colours, with the duotones showing off the woven structure to even greater advantage. Practical and easy to care for, as well as durable and highly abrasion-resistant, Laser is also well suited for office environments.

Laser is available in 35 colours.

|                     |  |
|---------------------|--|
| Material            | 100% polyester<br>Trevira CS                   |
| Weight              | 520 g/m <sup>2</sup> (15.3 oz/y <sup>2</sup> ) |
| Width               | 145 cm +/- 2 cm (57")                          |
| Abrasion resistance | 40,000 Martindale                              |
| Fastness to light   | Type 6   |
| Pilling             | Grade 4-5                                      |
| Fastness to rubbing | Grade 4-5 dry and wet                          |

|   |  |  |  |   |  |
|---|--|--|--|---|--|
|  <b>17</b><br>ice blue/ivory           |  <b>55</b><br>grass green       |  <b>56</b><br>teal blue         |  <b>18</b><br>dark blue/ivory     |  <b>57</b><br>dark blue            |  <b>37</b><br>nero/moor brown |
|  <b>13</b><br>stone grey               |  <b>09</b><br>green             |  <b>29</b><br>petrol/moor brown |  <b>51</b><br>ice blue            |  <b>21</b><br>dark blue/moor brown |  <b>50</b><br>black brown     |
|  <b>23</b><br>yellow/pastel green      |  <b>26</b><br>mint/pastel green |  <b>28</b><br>light grey/forest |  <b>20</b><br>ice blue/moor brown |  <b>03</b><br>dark grey            |  <b>36</b><br>nero/cognac     |
|  <b>25</b><br>light grey/pastel green |  <b>27</b><br>mint/forest      |  <b>22</b><br>dark blue/forest |  <b>19</b><br>blue/moor brown    |  <b>04</b><br>black               |  <b>06</b><br>dark red       |

---

|   |   |   |
|---|---|---|
|  <b>35</b><br>red/moor brown   |  <b>53</b><br>poppy red            |   |
|  <b>01</b><br>red              |  <b>31</b><br>pink/poppy red       |  <b>05</b><br>warmgrey       |
|  <b>33</b><br>marron/poppy red |  <b>30</b><br>light grey/poppy red |  <b>16</b><br>warmgrey/ivory |
|  <b>32</b><br>red/poppy red    |  <b>24</b><br>yellow/poppy red     |  <b>10</b><br>ivory          |

# Linho Home, F80

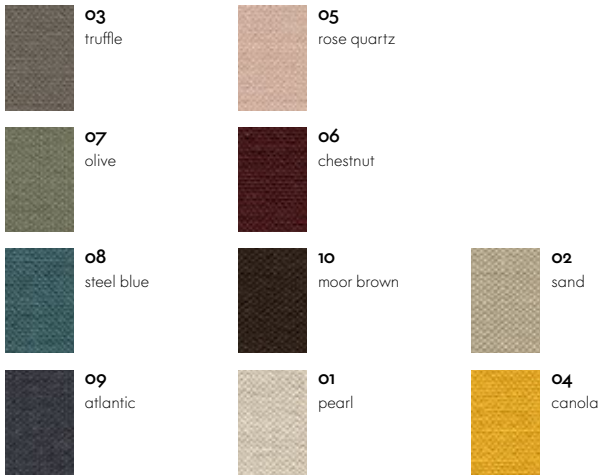
**vitra.**



The high-quality linen fabric Linho is manufactured in Belgium, from the plant to the finished textile. It has the slightly irregular appearance that is typical of linen yarn. The fabric is cool and dry to the touch, with natural earthy tones that exhibit a Mediterranean flair. Due to its high percentage of linen, Linho tends to form elegant creases, lending a natural look to soft upholstered furniture.

|                     |  |
|---------------------|--|
| Material            | 9% polyamide,<br>91% linen                     |
| Weight              | 450 g/m <sup>2</sup> (13.3 oz/y <sup>2</sup> ) |
| Width               | 137 cm +/- 2 cm (54")                          |
| Abrasion resistance | 18,000 Martindale                              |
| Fastness to light   | Type 5   |
| Pilling             | Grade 3  |
| Fastness to rubbing | Grade 3 dry and wet                            |

Linho is available in 10 colours.



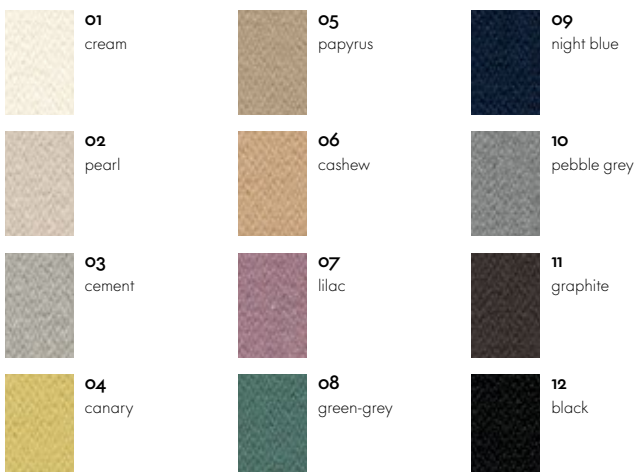
# Mello Home, F40



Mello is an elegant cotton fabric with a pleasant softness and cool tactile qualities. Thanks to a thicker melange yarn of recycled cotton, the robust twill weave has a lively yet balanced appearance. The understated colour palette for Mello ranges from pastel tones to natural, earthy shades and darker hues.

|                     |  |
|---------------------|--|
| Material            | 80% cotton,<br>20% polyester                   |
| Weight              | 530 g/m <sup>2</sup> (15.6 oz/y <sup>2</sup> ) |
| Width               | 142 cm +/- 2 cm (56")                          |
| Abrasion resistance | 30,000 Martindale                              |
| Fastness to light   | Type 5   |
| Pilling             | Grade 4  |
| Fastness to rubbing | Grade 3-4 dry and wet                          |

Mello is available in 12 colours.



# Olimpo Home, F6o

**vitra.**



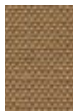
The typical linen texture of Olimpo gives the fabric a very fine and natural overall appearance. The fabric's high percentage of linen, clearly evident to the touch, results in comfortably cool conditions for the sitter. Thanks to the combination of viscose and linen, the fabric is durable and abrasion-resistant and exhibits a fine sheen.

Olimpo is available in 10 colours.

|                     |  |
|---------------------|--|
| Material            | 70% linen,<br>30% rayon                        |
| Weight              | 520 g/m <sup>2</sup> (15.3 oz/y <sup>2</sup> ) |
| Width               | 146 cm +/- 3 cm (57")                          |
| Abrasion resistance | 30,000 Martindale                              |
| Fastness to light   | Type 5   |
| Pilling             | Grade 3-4                                      |
| Fastness to rubbing | Grade 3-4 dry<br>and wet                       |



**10**  
sierra grey



**08**  
kalahari



**06**  
graphite grey



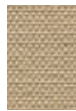
**05**  
taupe grey



**11**  
atlantic



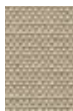
**04**  
sandstone



**07**  
parchment



**09**  
mokka



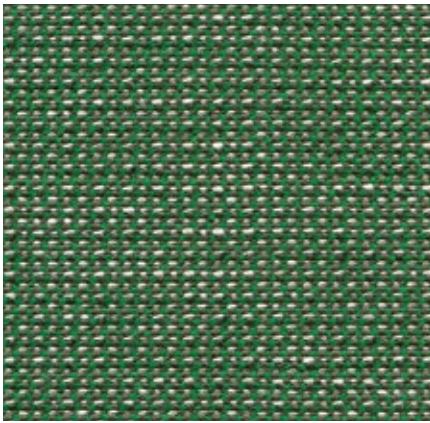
**03**  
bamboo



**02**  
pearl

# Reed Home, F100

**vitra.**



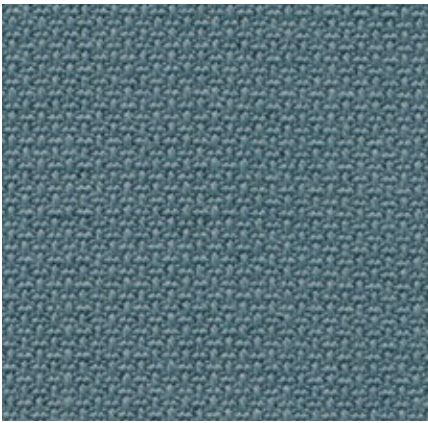
The elegant finely patterned fabric Reed is a blend of linen, wool and cotton. The structure of the fabric designed by Hella Jongerius has a hand-made look, its irregular lively linen yarn lending the fabric a natural expression. Reed is cool and soft to the touch and can be perfectly combined with other fabrics and materials.

Reed is available in 19 colours.

|                     |  |
|---------------------|--|
| Material            | 7% polyamide,<br>48% cotton,<br>25% new wool,<br>20% linen |
| Weight              | 400 g/m <sup>2</sup> (11.8 oz/y <sup>2</sup> )             |
| Width               | 142 cm +/- 2 cm (56")                                      |
| Abrasion resistance | 50,000 Martindale  |
| Fastness to light   | Type 5   |
| Pilling             | Grade 3-4  |
| Fastness to rubbing | Grade 3-4 dry<br>and wet                                   |



# Volo Home/Office, F6o



Volo is a finely structured wool blend with a refined weave that gives it an elegant appearance. This expressive textile shows strong solid colours to full advantage while simultaneously offering pleasant tactile qualities. With its soft look and appealing texture, Volo is a perfect fit for home interiors, but it is also well suited for use in the contract sector.

Volo is available in 17 colours.

|                     |  |
|---------------------|--|
| Material            | 15% polyamide,<br>85% new wool                 |
| Weight              | 435 g/m <sup>2</sup> (12.8 oz/y <sup>2</sup> ) |
| Width               | 145 cm +/- 3 cm (57")                          |
| Abrasion resistance | 100,000 Martindale                             |
| Fastness to light   | Type 6   |
| Pilling             | Grade 4-5                                      |
| Fastness to rubbing | Grade 4-5 dry<br>and wet                       |



**04**  
lemon



**56**  
teal blue



**14**  
iron grey



**13**  
moor brown



**06**  
summer grass



**51**  
ice blue



**15**  
mid-grey



**69**  
marron



**07**  
fern



**10**  
indigo



**02**  
dark grey



**77**  
brick



**08**  
green-grey



**11**  
night blue



**16**  
black



**12**  
red



**05**  
canola



Covers have a decisive influence on the appearance and characteristics of upholstered furniture. Along with the type of material, weave and aesthetic features of the textile, a major role is played by technical properties such as resistance to abrasion, fading or stains.

Function and performance are primarily determined by the type of fabric used. In general, synthetic fibres are superior to natural fibres in terms of their technical characteristics. For this reason, blends of different materials are employed to combine the advantages of the individual fibres.

In the following, you will find some of the key features of the textiles used by Vitra in its upholstery covers:

**Cotton (CO)**

Skin-friendly natural fibre of plant origin, comfortable to the touch, readily absorbs moisture. Often inferior to synthetic fibres with regard to colourfastness and light resistance; flat weaves susceptible to pilling.

**Linen (LI)**

Natural fibre of plant origin with slight lustre, cool and comfortable, repels dirt, no pilling. Limited colourfastness to light and crocking, creases easily.

**Wool (WO)**

Elastic natural fibre of animal origin, naturally self-cleaning – a brief airing disperses absorbed odours, leaving the wool smelling neutral and fresh again. Good resistance to light and abrasion, highly absorbent, minimal creasing, low flammability. Subject to pilling and matting.

**Polyester (PE), Polyacrylic (PA),****Viscose (VI)**

Synthetic, highly uniform, lightfast fibres. The non-absorbent properties of synthetics can be mitigated with fibre blends and weaving techniques.

The overall look of a piece of furniture is influenced by the colour and type of cover fabric, its properties (elastic or non-stretch) as well as the upholstery technique (removable or attached covers). Consequently, a sofa can take on a different appearance depending on the cover material. Generally speaking, cover fabrics with some elasticity are less susceptible to creases and puckering, since they have an adaptable fit on three-dimensional forms. Heavier cover materials such as Laser or Credo drape more smoothly while thinner materials exhibit a finer rippling effect.

**Care instructions:**

All Mariposa covers are removable. Fabric covers can be taken to a professional cleaner. Prior to treatment, please be sure to note the material composition of the cover fabric.

Should you ever need to replace individual parts or covers due to wear and tear, please contact your local Vitra retailer.



Mariposa Love Seat, Dumet 13 green-melange

---



Mariposa Sofa, 2-seater, Olimpo 07 parchment

---



Mariposa Sofa, 2½-seater and Love Seat, Moss 10 petrol-aubergine

---





Mariposa Sofa, 2½-seater, Credo 13 salt 'n' pepper

---



Mariposa Sofa, 3-seater, Iroko 01 lemon

---



Mariposa Sofa, 3- and 2-seater, Iroko 87 teak brown

---

The thinking behind the Vitra Home Collection is not to settle on one “interior design style” but rather to offer a selection of furniture and accessories which can be freely combined according to each customer’s preferences. Here we provide a few suggestions for products and accessories in colour palettes which harmonize beautifully with the Mariposa Sofa.



**Rise Table**  
ø 50 x 47,5 - 66 cm



**Occasional Table**  
39,2 x 33,5 x 25 cm



**Prismatic Table**  
41 x 37,5 cm



**Panton Junior**  
37,5 x 44,5 x 63 cm



**Eames Elephant**  
78,5 x 41 x 41,5 cm



**Hexagonal Table**  
51 x 44 x 41 cm



**Hand**  
300 x 400 mm



**Dove**  
300 x 400 mm



**Couple**  
300 x 400 mm



**Love, pink**  
400 x 400 mm



**Love, red**  
400 x 400 mm



**Quatrefoil pink**  
400 x 400



**NesTable**  
50 x 35 x 57,4 - 77 cm



**Wall Clock  
Sunburst Clock**  
ø 47 cm



**Plywood Group  
LCW**  
53 x 56 x 68 cm



**Zoo Timer  
Elihu the Elephant**  
32 x 32 x 5 cm



**Bovist „Pottery“**  
ø 54 x 38 cm



**Eames Wool Blanket, light blue**  
200 x 135 cm<sup>2</sup>



**Zoo Timer  
Fernando the Fish**  
25 x 28 x 3,5 cm



**Plywood Group LCW**  
53 x 56 x 68 cm



**Nelson Bench**  
122 x 47 x 35,5 cm | 183,5 x 47 x 35,5 cm



**L'Oiseau**  
24,5 x 15 x 6 cm



**Cork Family**  
ø 31 x 33 cm





**Eames Wool Blanket, taupe**  
200 x 135 cm<sup>2</sup>



**Small Dot Pattern Document**  
40 x 40 cm



**Butterfly Stool**  
42 x 39 cm



**Metal Side Table**  
31,5 x 31,5 x 38 cm | 40 x 40 x 44,5 cm |  
31,5 x 70 x 35,5 cm



**Elliptical Table ETR**  
226,5 x 74,5 x 22,5 cm



**Plate Table**  
40 x 40 x 37 cm | 70 x 70 x 37 cm |  
120 x 40 x 37 cm | 120 x 70 x 37 cm



**Small Dot Pattern Document**  
40 x 40 cm



**Eyes**  
30 x 40 cm



**Geometri black/white**  
40 x 40 cm



**Maze, black**  
40 x 40 cm



**Snake (black)**  
40 x 40 cm



**Checker black/white**  
40 x 40 cm



**Eames Wool Blanket, schwarz**  
200 x 135 cm<sup>2</sup>



**Wall Clocks**  
**Sunflower Clock, ø 75 cm**  
**Asterisk Clock, ø 25 cm**



**Eames House Bird**  
28 x 8,5 x 27,5 cm

