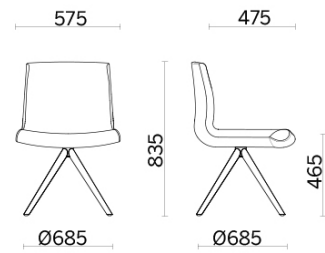


## Grace



Design and design elements for possible compositions made to measure according to space and aesthetic needs. Grace, with design by Sergio Bellin, is a highly polyhedral seat, able to change style by wearing completely different legs and bases in terms of function, finish and line. Many chairs in one, with the possibility of customising colour and finish details, creating a different decor for every space.

## Meeting



## Materials and colours

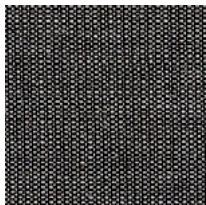
### Upholstery



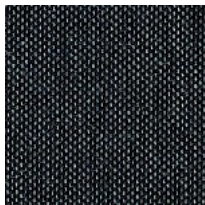
Fabric SY | Sinergy  
Available colours 11



Fabric ME  
Available colours 13



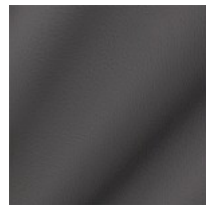
Fabric CN | Canvas 2  
Available colours 10



Fabric CL | Clara 2  
Available colours 10



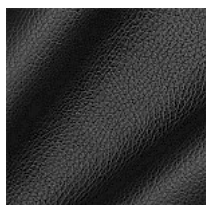
Fabric CS | Crisp  
Available colours 35



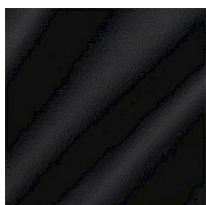
Faux leather CI  
Available colours 13



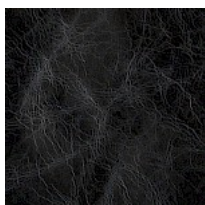
Faux leather CX  
Available colours 13



Leather S + Faux leather  
N  
Available colours 13



Leather TS  
Available colours 13



Leather TU  
Available colours 4



Leather TX  
Available colours 4

**Questo prodotto è garantito 5 anni.** Sitland Spa si riserva di apportare modifiche e/o migliorie di carattere tecnico ed estetico ai propri modelli e prodotti in qualsiasi momento e senza preavviso. Le foto e i colori visualizzati sono puramente indicativi e possono variare rispetto alla realtà. Per maggiori informazioni si prega di contattare il nostro Servizio Clienti [service@sitland.com](mailto:service@sitland.com)