

## Joy



The Joy pouf embodies original geometric linearity, played out on slim proportions and measured slants, enhanced by a pleasing colour contrast. An item of furniture with multiple intended uses, functional and decorative. An attractive seat, comfortable in use. Available in different versions with customisation of the distinctive and sophisticated two-colour scheme.

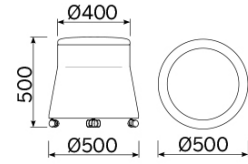
### Projects

**Salone Internazionale del Mobile di Milano 2018**, Milano, Italy (2018)

**EXTRA geometrie in bilico tra arte e design #2**, Vercelli, Italy (2018)

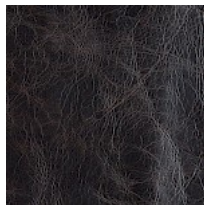
**Sitland chez Gabriel**, Parigi, France (2018)

## H 500 with casters



## Materials and colours

### Upholstery



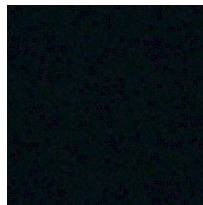
Leather TU  
Available colours 4



Leather TX  
Available colours 4



Mesh RR  
Available colours 10



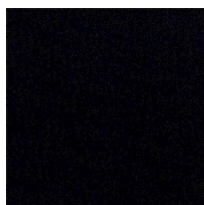
Fabric SY | Sinergy  
Available colours 11



Fabric MY | Memory 2  
Available colours 8



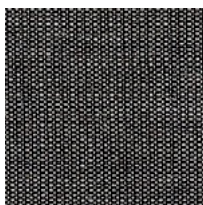
Fabric ME  
Available colours 13



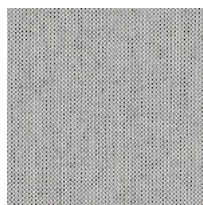
Fabric IP  
Available colours 13



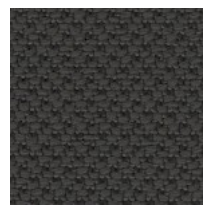
Fabric CO | Coda 2  
Available colours 7



Fabric CN | Canvas 2  
Available colours 10



Fabric BA | Basel  
Available colours 10



Fabric AL | Alba  
Available colours 9

**Questo prodotto è garantito 5 anni.** Sitland Spa si riserva di apportare modifiche e/o migliorie di carattere tecnico ed estetico ai propri modelli e prodotti in qualsiasi momento e senza preavviso. Le foto e i colori visualizzati sono puramente indicativi e possono variare rispetto alla realtà. Per maggiori informazioni si prega di contattare il nostro Servizio Clienti [service@sitland.com](mailto:service@sitland.com)