

## Passe-partout



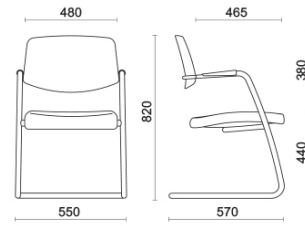
Passe-partout, designed by Sergio Bellin, is a collection of seats that meets all comfort and styling requirements, for all sorts of settings. This adaptable piece of furniture can be customised with a broad range of fine upholsteries. Passe-partout is available in the sled-base visitor and meeting versions.

### Projects

**Avaya**, Budapest, Hungary (2014)

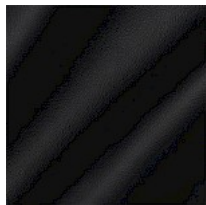
**BCC Sant'Elena**, Padova, Italy (2013)

## Sled visitor structure medium back

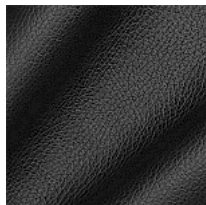


## Materials and colours

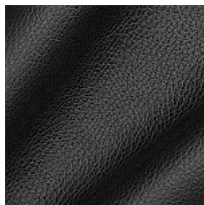
### Upholstery



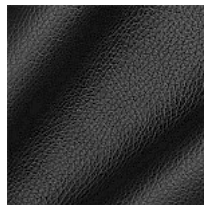
Leather TS  
Available colours 13



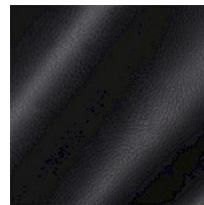
Leather S  
Available colours 13



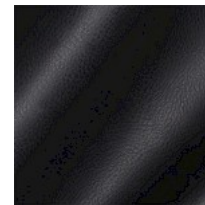
Leather S + Faux leather N  
Available colours 13



Faux leather N  
Available colours 13



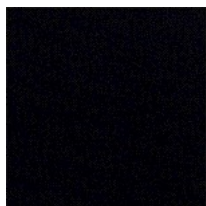
Faux leather CX  
Available colours 13



Faux leather CI  
Available colours 13



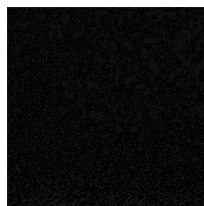
Mesh RR  
Available colours 9



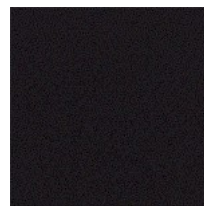
Fabric IP  
Available colours 13



Fabric ME  
Available colours 13



Fabric BN  
Available colours 10



Fabric AB  
Available colours 13

**Questo prodotto è garantito 5 anni.** Sitland Spa si riserva di apportare modifiche e/o migliorie di carattere tecnico ed estetico ai propri modelli e prodotti in qualsiasi momento e senza preavviso. Le foto e i colori visualizzati sono puramente indicativi e possono variare rispetto alla realtà. Per maggiori informazioni si prega di contattare il nostro Servizio Clienti [service@sitland.com](mailto:service@sitland.com)