

## Vega



The Vega collection, designed by Sergio Bellin, offers a host of variants to accommodate all requirements. Whether minimalist and elegant or distinguished by special stitching, packed with a distinctive personality. Its design is informal yet at the same time sophisticated. The seat is equipped with an all-steel internal frame, covered with shape-retaining flexible polyurethane, with elastic belts ensuring superior comfort. The structure can be customised with semi-matt black or chrome finish

### Projects

**Orgatec**, Colonia, Germany (2014)

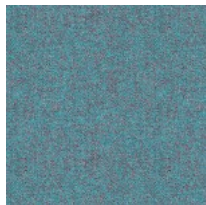
**Epsilon**, Parigi, France (2017)

## Vega L executive

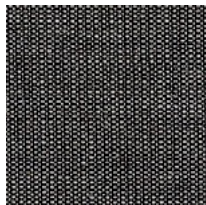


## Materials and colours

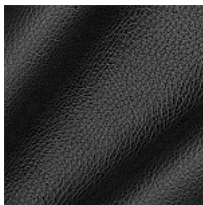
### Upholstery



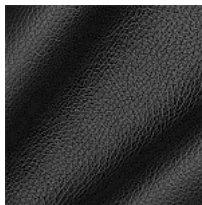
Fabric SY | Sinergy  
Available colours 11



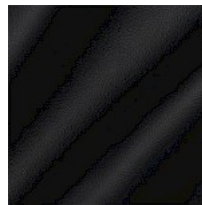
Fabric CN | Canvas 2  
Available colours 10



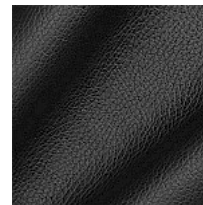
Leather S + Faux leather  
N  
Available colours 13



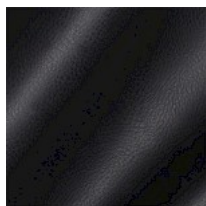
Leather S  
Available colours 13



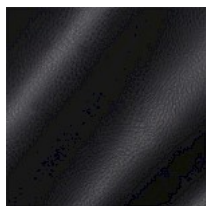
Leather TS  
Available colours 13



Faux leather N  
Available colours 13



Faux leather CX  
Available colours 13



Faux leather CI  
Available colours 13

**Questo prodotto è garantito 5 anni.** Sitland Spa si riserva di apportare modifiche e/o migliorie di carattere tecnico ed estetico ai propri modelli e prodotti in qualsiasi momento e senza preavviso. Le foto e i colori visualizzati sono puramente indicativi e possono variare rispetto alla realtà. Per maggiori informazioni si prega di contattare il nostro Servizio Clienti [service@sitland.com](mailto:service@sitland.com)