

## Milos Elle

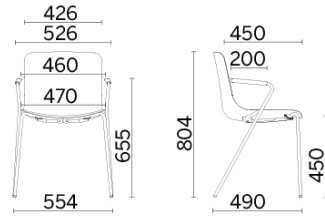


Milos Elle offers the aesthetic of the Milos model with a structural variant focused on materials performance research. The plastic shell has an incredibly fine thickness, the result of advanced design research, which has led to an aesthetic result of extreme lightness, maintaining maximum resistance in the seat. The integrated linear armrests complete seating comfort.

### Projects

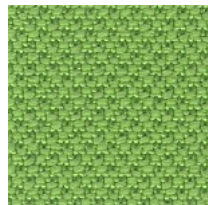
**Sitland chez Gabriel, Parigi, France (2018)**

## 4-leg

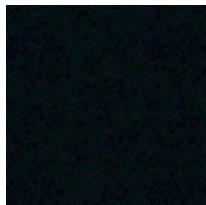


## Materials and colours

### Upholstery



Fabric AL | Alba  
Available colours 9



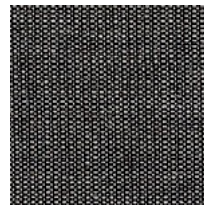
Fabric SY | Sinergy  
Available colours 11



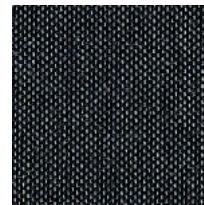
Fabric MY | Memory 2  
Available colours 8



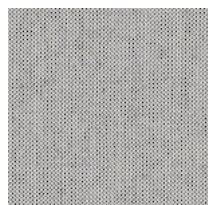
Fabric ME  
Available colours 13



Fabric CN | Canvas 2  
Available colours 10



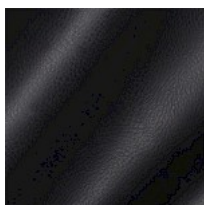
Fabric CL | Clara 2  
Available colours 10



Fabric BA | Basel  
Available colours 10



Faux leather CX  
Available colours 13



Faux leather CI  
Available colours 13

**Questo prodotto è garantito 5 anni.** Sitland Spa si riserva di apportare modifiche e/o migliorie di carattere tecnico ed estetico ai propri modelli e prodotti in qualsiasi momento e senza preavviso. Le foto e i colori visualizzati sono puramente indicativi e possono variare rispetto alla realtà. Per maggiori informazioni si prega di contattare il nostro Servizio Clienti [service@sitland.com](mailto:service@sitland.com)