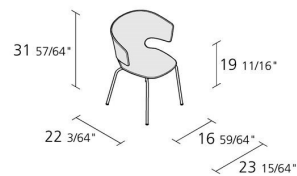
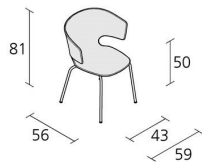


# Alias

## TAORMINA CHAIR / 503

*Alfredo Häberli*

Armchair with structure in stove enamelled or chromed steel. Seat and back in solid plastic material padded with CFC free expanded polyurethane foam, removable cover in fabric, synthetic-leather or in leather. Also available in stacking version.



# INFORMATION



Warranty 10 years



Fire-retardancy  
(some parts only)



Recyclable



Removable covers



5

Max number of  
chairs for stacking



1

Boxes number



1

Max number pieces  
per a box



0,409

Volume in m<sup>3</sup>



9

Gross weight in Kg

# FINISHES TAORMINA CHAIR / 503

## CHROMED STEEL



CR

## STOVE ENAMELLED STEEL



A011

A019

A047

## STOVE ENAMELLED ALUMINIUM



A009

A016

## WOOD



RV

RVT

RC

## COLOURED STAINS



V131

V140

V142

## LEATHER PELLE FRAU® COLOR SYSTEM



B004

B006

B026

B030

B056

B057

B080

## KVADRAT® CANVAS (EXAMPLES)

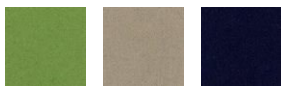


174

424

964

## KVADRAT® DIVINA



DA28

DA45

DA48

## KVADRAT® FOSS (EXAMPLES)



112

192

612

### KVADRAT® HALLINGDAL 65 (EXAMPLES)



HG06 HG14 HG24

### KVADRAT® HERO (EXAMPLES)



151 511 931

### KVADRAT® STEELCUT (EXAMPLES)



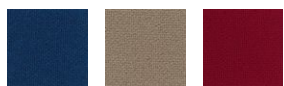
SC01 SC02 SC03

### KVADRAT® STEELCUT TRIO (EXAMPLES)



ST24 ST25 ST28

### KVADRAT® TONUS (EXAMPLES)



KN04 KN05 KN09

### KVADRAT® UMAMI (EXAMPLES)



111 551 721

### KVADRAT® UMAMI 2 (EXAMPLES)



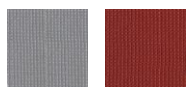
212 512 532

### KVADRAT® UMAMI 3 (EXAMPLES)



143 353 973

### CAMIRA® URBAN (EXAMPLES)



YN094 YN027

CAMIRA® XTREME (EXAMPLES)



YS141

SYNTHETIC LEATHER STAMSKIN® TOP (EXAMPLES)



07422



07454



07458