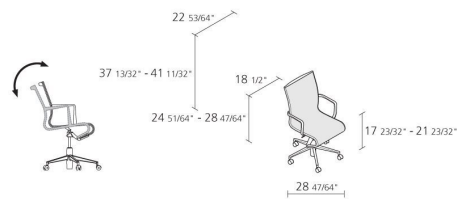
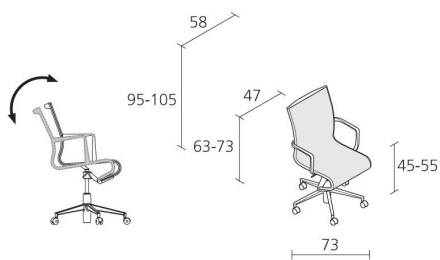


# Alias

## ROLLINGFRAME+ TILT 47 / 445

*Alberto Meda*

Height adjustable chair with arms, with soft (or hard or soft breaking \*\*\*) castors and 5-star swivel base with tilting mechanism. Structure made of extruded aluminium profile and die-cast aluminium elements; seat and back in fire retardant PVC covered polyester mesh or in Camira® or Kvadrat® fabric or in Pelle Frau® leather.\*\*\* on request



# INFORMATION



Warranty 10 years

---



Fire-retardancy



Recyclable



Greenguard®  
product certification

---



1

Boxes number



1

Max number pieces  
per a box



0,432

Volume in m<sup>3</sup>



16

Gross weight in Kg

---

# FINISHES ROLLINGFRAME+ TILT 47 / 445

## CHROMED ALUMINIUM



CR

## POLISHED ALUMINIUM



AB

## STOVE ENAMELLED ALUMINIUM



A009



A010



A011



A016



A019



A022



A039



A041



A042



A047

## MESH A



R007



R009



R028

## MESH B



R003



R006



R011



R020



R024



R025

## LEATHER PELLE FRAU® COLOR SYSTEM



B004



B006



B026



B030



B056



B057



B080

## KVADRAT® DIVINA



DA28



DA47



DA59

## KVADRAT® TONUS (EXAMPLES)



KN01



KN04



KN05

## KVADRAT® UMAMI (EXAMPLES)



111



551



721

KVADRAT® UMAMI 2 (EXAMPLES)



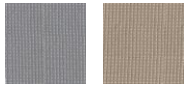
212 512 532

KVADRAT® UMAMI 3 (EXAMPLES)



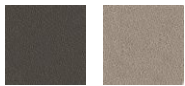
143 353 973

CAMIRA® URBAN (EXAMPLES)



YN094 YN108

CAMIRA® XTREME (EXAMPLES)



YS141 YS108