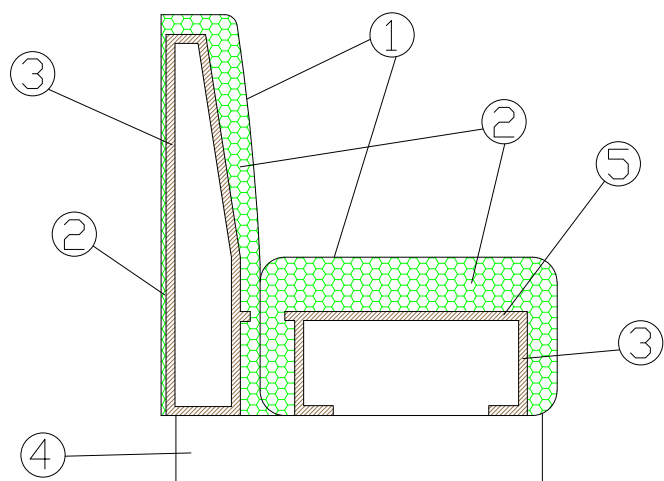


DESMOND 95-120



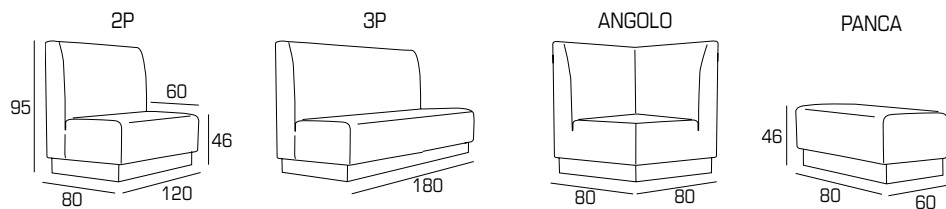
MATERIALI:

- 1 - fibra di dacron® 100 gr;
- 2 - poliuretano espanso indeformabile di diverse densità;
- 3 - telaio in multistrato di legno di abete;
- 4 - base in legno verniciato;
- 5 - piana in multistrato di legno.

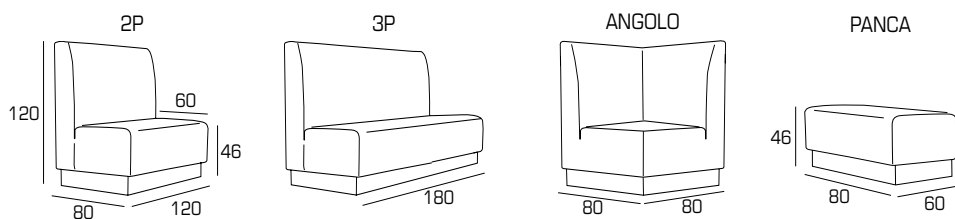


DESMOND COLLECTION:

H 95



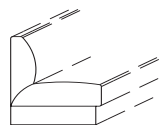
H 120



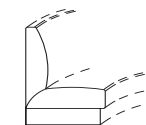
1IM DESMOND 95-120

H 95

DIVANO A



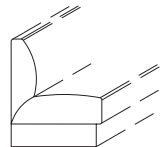
SVILUPPO LINEARE



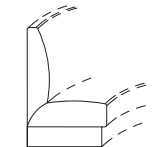
SVILUPPO CURVO

H 120

DIVANO A

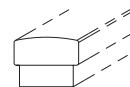


SVILUPPO LINEARE

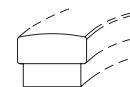


SVILUPPO CURVO

PANCA A



SVILUPPO LINEARE



SVILUPPO CURVO

BASE:

h 14



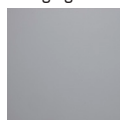
FINITURE BASI LAMINATE:

bianco



arpa 0003

grigio



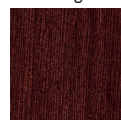
arpa 211

nero



arpa 509

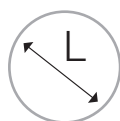
wengè



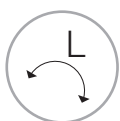
abet 313

PERSONALIZZAZIONI:

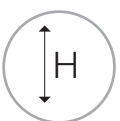
sviluppo
lineare



sviluppo
curvo



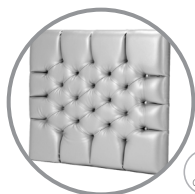
altezza
variabile



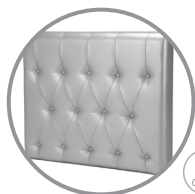
rivestimento
personalizzabile



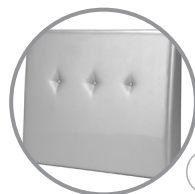
FINITURE SCHIENALI:



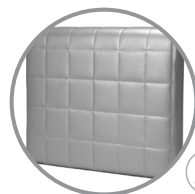
01



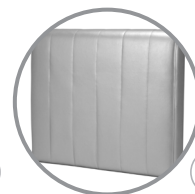
03



04



05



06

INFORMAZIONI TECNICHE:

Sfoderabile: NO

	kg	m ³	mts		kg	m ³	mts
DESMOND 95 2P	33	0.92	4.00	DESMOND 120 2P	43	1.16	4.50
DESMOND 95 3P	49	1.37	5.50	DESMOND 120 3P	64	1.73	6.00
DESMOND 95 ANGOLO	22	0.61	4.00	DESMOND 120 ANGOLO	26	0.77	4.50
DESMOND 95 PANCA	19	0.34	1.70	DESMOND 120 PANCA	19	0.33	1.70
DESMOND 95 DIV. SV. LINEARE	28	0.76	3.50x1 mtl	DESMOND 120 DIV. SV. LINEARE	36	0.96	4.00x1 mtl
DESMOND 95 DIV. SV. CURVO	28	0.76	3.50x1 mtc	DESMOND 120 DIV. SV. CURVO	36	0.96	4.00x1 mtc
DESMOND 95 PANCA SV.LINEARE	16	0.27	1.50x1 mtl	DESMOND 120 PANCA SV. LINEARE	15	0.27	1.50x1 mtl