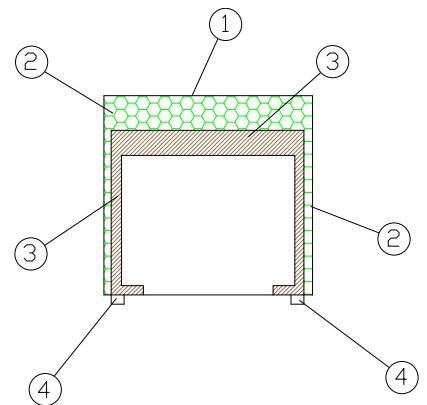


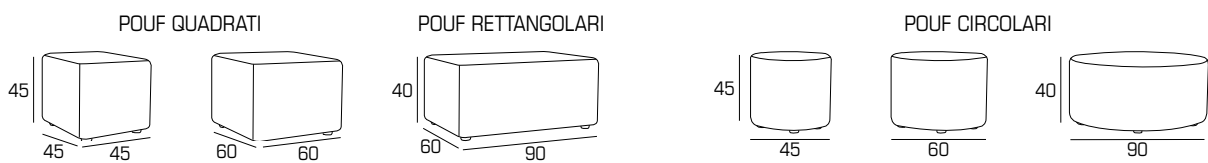


MATERIALI:

- 1 - fibra di dacron® 100 gr;
- 2 - poliuretano espanso indeformabile di diverse densità;
- 3 - telaio in multistrato di legno;
- 4 - piedi in PVC.



POUF COLLECTION:



PIEDI:



INFORMAZIONI TECNICHE:

Sfoderabile: NO	kg	m ³	mts		kg	m ³	mts
POUF 45X45	12	0.10	1.05	POUF Ø45	12	0.11	1.50
POUF 60X60	16	0.16	1.60	POUF Ø60	19	0.16	1.60
POUF 60X90	15	0.40	2.00	POUF 60X90	20	0.24	2.10