

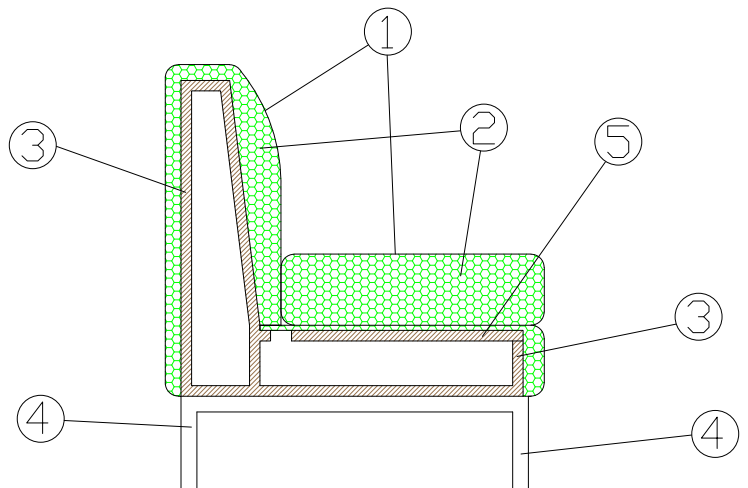
1IM

# MORGAN

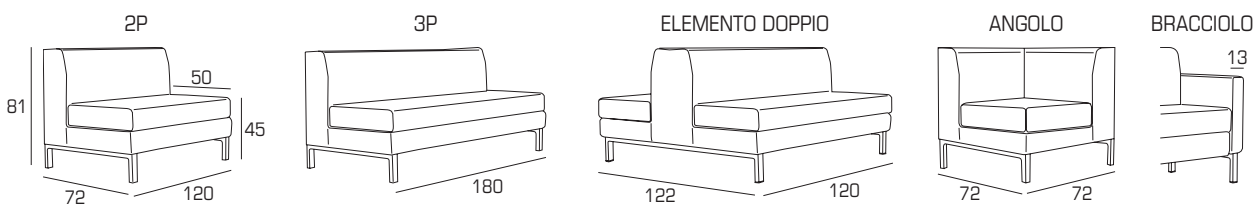


## MATERIALI:

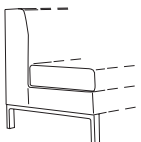
- 1 - fibra di dacron® 100 gr;
- 2 - poliuretano espanso indeformabile di diverse densità;
- 3 - telaio in multistrato di legno di abete;
- 4 - base in tubolare metallico;
- 5 - piana in multistrato di legno.



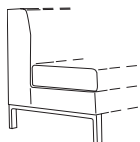
## MORGAN COLLECTION:



DIVANO A



SVILUPPO LINEARE

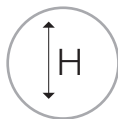
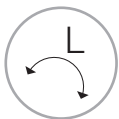
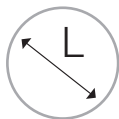
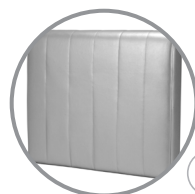
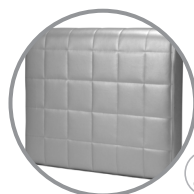
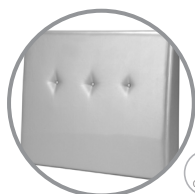
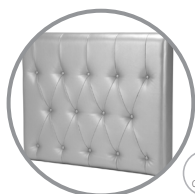


SVILUPPO CURVO

## GAMBE:

h 18



**PERSONALIZZAZIONI:**sviluppo  
linearesviluppo  
curvoaltezza  
variabilerivestimento  
personalizzabile**FINITURE SCHIENALI:****INFORMAZIONI TECNICHE:**

Sfoderabile: NO

kg

m<sup>3</sup>

mts

kg

m<sup>3</sup>

mts

MORGAN 2P

26

0.70

3.80

MORGAN BRACCIOLO

/

0.05

1.15

MORGAN 3P

35

1.05

5.80

MORGAN ELEMENTO DOPPIO

32

1.19

7.50

MORGAN DIV. SV. LINEARE

22

0.58

3.20x1 mtl

MORGAN ANGOLO

25

0.42

3.00

MORGAN DIV. SV. CURVO

25

0.58

3.20x1 mtc