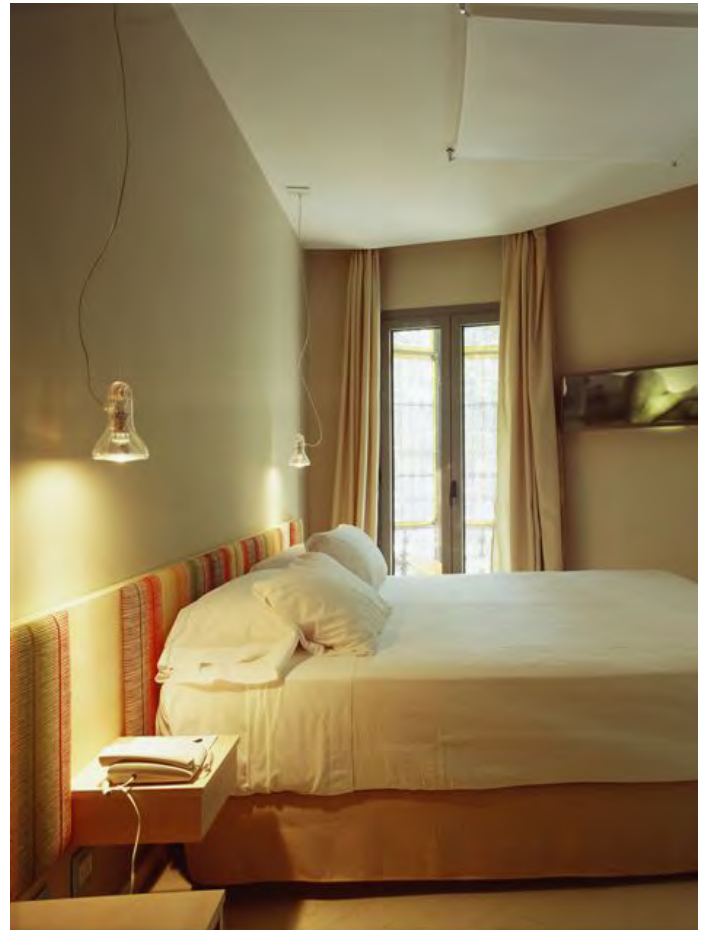
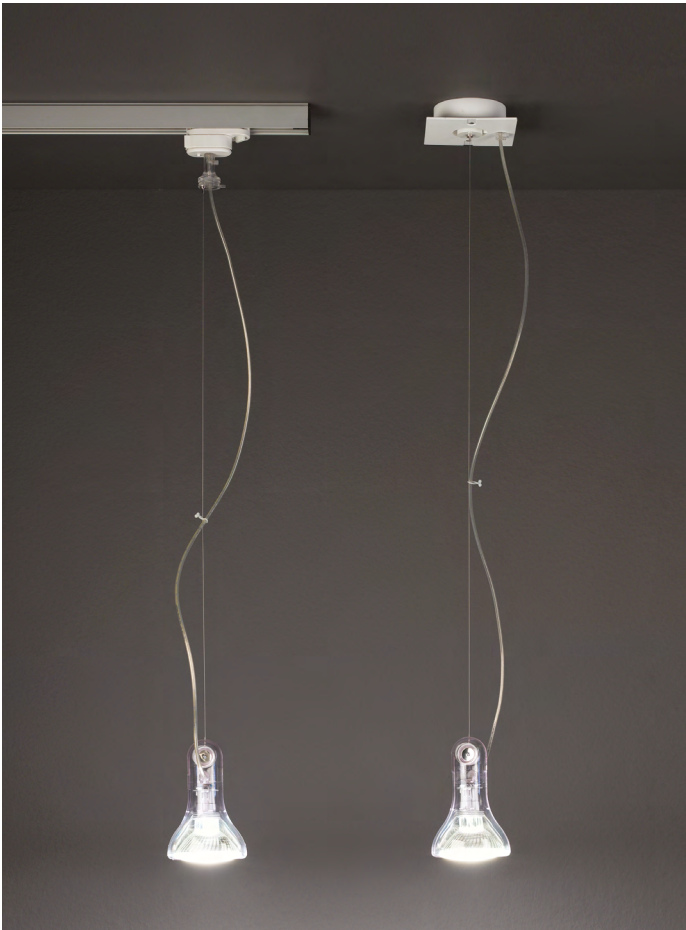




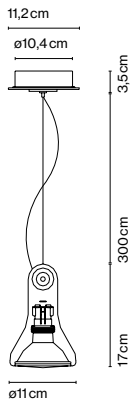
# Atlas

## Joan Gaspar

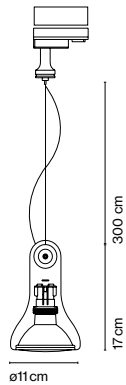
**marset**



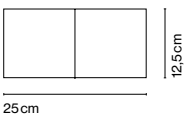
**Atlas Susp.**



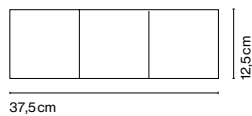
**Atlas Susp. Ad.**



**Base Atlas 2**



**Base Atlas 3**



**Atlas Susp. / Susp. Ad.**

- E27 PAR30 75W
- E27 LED PAR30 12W 30°
- 2800K 2300cd

Transparent polycarbonate shade that envelops the light source. Canopy made of white polyamide.

○ Transparent

Translucent electrical cord  
Atlas with track adaptor



- [Download](#) Assembly Instructions
- [Download](#) 2D
- [Download](#) 3D
- [Download](#) Energy label

**Range**



info@marset.com  
www.marset.com

Atlas transforms a common bulb into a spotlight, enveloping it along its outline. Taking its nudity as the starting point, it dresses the bulb up with a transparent suit that also gives the lamp the added benefit of lightness.