



**CAPITAL**<sup>®</sup>  
ITALIAN EXCLUSIVE INTERIORS

**HOME PROJECT**  
2019





**CAPITAL**<sup>®</sup>  
ITALIAN EXCLUSIVE INTERIORS



## **NATURE SENSATIONS**

DISCOVER CAPITAL FABRIC AND LEATHER MATERIALS

# BLUE ECLIPSE

FABRICS AND LEATHERS MOODBOARD 01



CAPITAL®

## VELVET

- a. Dark Blue Sam 10
- b. Light Grey Sam 07
- c. Deep Blue Sam 11

## FABRIC

- d. Twice 2023
- e. Pollock 1221
- f. Polysilk .GO 302
- g. Polysilk .GO 307

## LEATHER

- h. Vintage 28
- i. Nabuk 28

CAPITAL®

# HEARTH

FABRICS AND LEATHERS MOODBOARD 02



## CAPITAL®

### VELVET

- a. Smeraldo Ros 118
- b. Salvia Ros 116
- c. Zafferano Ros 135

### FABRIC

- d. Twice 3043
- e. Polysilk .GO 12
- f. Polysilk .GO 101

### LEATHER

- g. Vintage 32
- h. Nabuk 02

# SAHARA

FABRICS AND LEATHERS MOODBOARD 03



CAPITAL®

## VELVET

- a. Corallo Ros 126
- b. Chocolate Sam 04
- c. Khaky Sam 03

## FABRIC

- d. Twice 3247
- e. Polysilk 2001

## LEATHER

- f. TDM 2008
- g. Nabuk 19



# FLAMINGO

FABRICS AND LEATHERS MOODBOARD 04



CAPITAL®

## VELVET

- a. Cipria Ros 130
- b. Khaky Sam 03
- c. Boardeaux Sam 05

## FABRIC

- d. Hexagonal 0405
- e. Polysilk .GO 101
- f. Polysilk .GO 104

## LEATHER

- g. TDM 2008
- h. Vintage 27
- i. Nabuk 10

# EOLIE

## FABRICS AND LEATHERS MOODBOARD 05



## CAPITAL®

### VELVET

a. Black Sam 08

### FABRIC

b. Polysilk .GO 14  
c. Hexagonal 0158  
d. Hexagonal 0573  
e. Twice 2737  
f. Grid 0744

### LEATHER

g. Vintage 10

# NABUK

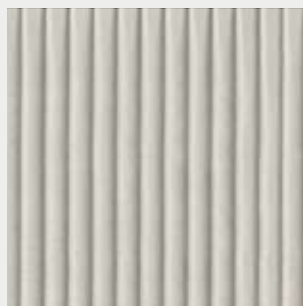
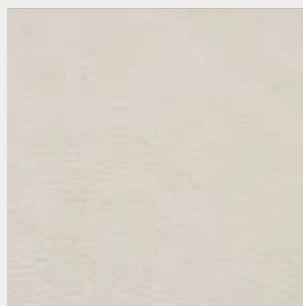
LEATHER

PELLE

CAT. B Plain  
CAT. C Rhombus  
CAT. C Cannette  
CAT. B Liscia  
CAT. C Rombo  
CAT. C Cannè

*Nabuk leather made by first quality European bulls. Thickness mm 1.*

Pelle nabuk realizzata su tori europei di prima scelta. Spessore mm 1.



---

NABUK

Plain 04  
Rhombus 04  
Cannette 04  
Liscia 04  
Rombo 04  
Cannè 04



---

NABUK

Plain 05  
Rhombus 05  
Cannette 05  
Liscia 05  
Rombo 05  
Cannè 05



---

NABUK

Plain 15  
Rhombus 15  
Cannette 15  
Liscia 15  
Rombo 15  
Cannè 15



---

---

NABUK

- Plain 24*
- Rhombus 24*
- Cannette 24*
- Liscia 24
- Rombo 24
- Cannè 24



---

---

NABUK

- Plain 12*
- Rhombus 12*
- Cannette 12*
- Liscia 12
- Rombo 12
- Cannè 12

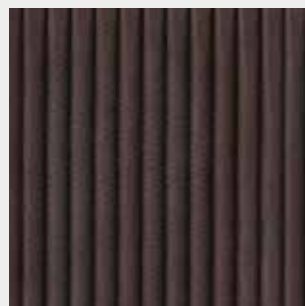


---

---

NABUK

- Plain 06*
- Rhombus 06*
- Cannette 06*
- Liscia 06
- Rombo 06
- Cannè 06



---

---

NABUK

- Plain 10*
- Rhombus 10*
- Cannette 10*
- Liscia 10
- Rombo 10
- Cannè 10



---

---

NABUK

- Plain 18*
- Rhombus 18*
- Cannette 18*
- Liscia 18*
- Rombo 18*
- Cannè 18*



---

---

NABUK

- Plain 28*
- Rhombus 28*
- Cannette 28*
- Liscia 28*
- Rombo 28*
- Cannè 28*



---

---

NABUK

- Plain 02*
- Rhombus 02*
- Cannette 02*
- Liscia 02*
- Rombo 02*
- Cannè 02*



---

---

NABUK

- Plain 01*
- Rhombus 01*
- Cannette 01*
- Liscia 01*
- Rombo 01*
- Cannè 01*

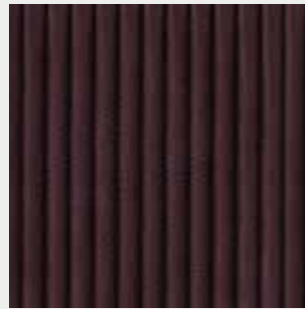


---

---

NABUK

- Plain 27*
- Rhombus 27*
- Cannette 27*
- Liscia 27*
- Rombo 27*
- Cannè 27*



---

---

NABUK

- Plain 35*
- Rhombus 35*
- Cannette 35*
- Liscia 35*
- Rombo 35*
- Cannè 35*



---

---

NABUK

- Plain 09*
- Rhombus 09*
- Cannette 09*
- Liscia 09*
- Rombo 09*
- Cannè 09*

# NATURAL GRAIN

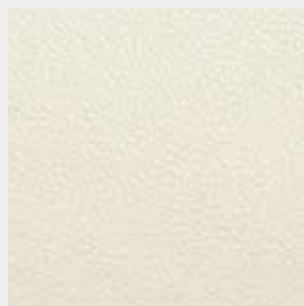
LEATHER

PELLE

CAT. B Plain  
CAT. C Rhombus  
CAT. C Cannette  
CAT. B Liscia  
CAT. C Rombo  
CAT. C Cannè

*Natural grain leather, nabuk handstained, mat effect made by first quality European bulls. Thickness mm 1.*

Pelle primo fiore, grana naturale, effetto opaco realizzata su tori europei di prima scelta. Spessore mm 1.



---

NATURAL GRAIN

*Plain Lino 2002  
Rhombus Lino 2002  
Cannette Lino 2002  
Liscia Lino 2002  
Rombo Lino 2002  
Cannè Lino 2002*



---

NATURAL GRAIN

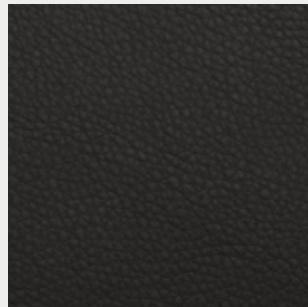
*Plain Canapa 2003  
Rhombus Canapa 2003  
Cannette Canapa 2003  
Liscia Canapa 2003  
Rombo Canapa 2003  
Cannè Canapa 2003*



---

NATURAL GRAIN

*Plain Tortora 2015  
Rhombus Tortora 2015  
Cannette Tortora 2015  
Liscia Tortora 2015  
Rombo Tortora 2015  
Cannè Tortora 2015*

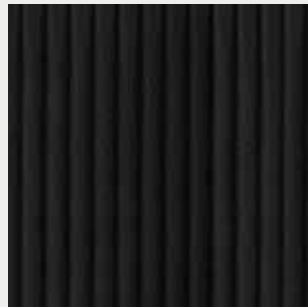


---

---

NATURAL GRAIN

*Plain Cappuccino 2006*  
*Rhombus Cappuccino 2006*  
*Cannette Cappuccino 2006*  
*Liscia Cappuccino 2006*  
*Rombo Cappuccino 2006*  
*Cannè Cappuccino 2006*

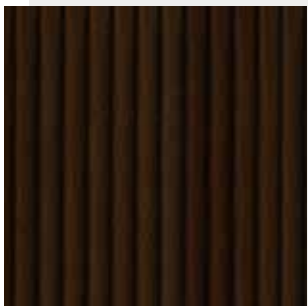


---

---

NATURAL GRAIN

*Plain Antracite 2011*  
*Rhombus Antracite 2011*  
*Cannette Antracite 2011*  
*Liscia Antracite 2011*  
*Rombo Antracite 2011*  
*Cannè Antracite 2011*



---

---

NATURAL GRAIN

*Plain 2020 - 2021*  
*Rhombus 2020 - 2021*  
*Cannette 2020 - 2021*  
*Liscia 2020 - 2021*  
*Rombo 2020 - 2021*  
*Cannè 2020 - 2021*



---

---

NATURAL GRAIN

*Plain TDM 2008*  
*Rhombus TDM 2008*  
*Cannette TDM 2008*  
*Liscia TDM 2008*  
*Rombo TDM 2008*  
*Cannè TDM 2008*





---

---

NATURAL GRAIN

*Plain Terracotta 2007*  
*Rhombus Terracotta 2007*  
*Cannette Terracotta 2007*  
*Liscia Terracotta 2007*  
*Rombo Terracotta 2007*  
*Cannè Terracotta 2007*

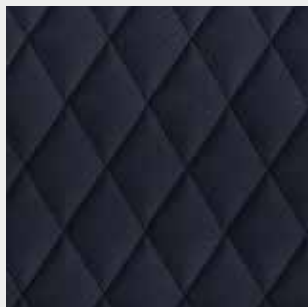
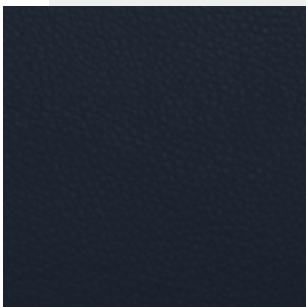


---

---

NATURAL GRAIN

*Plain Aubergine 284*  
*Rhombus Aubergine 284*  
*Cannette Aubergine 284*  
*Liscia Aubergine 284*  
*Rombo Aubergine 284*  
*Cannè Aubergine 284*



---

---

NATURAL GRAIN

*Plain Deep 275*  
*Rhombus Deep 275*  
*Cannette Deep 275*  
*Liscia Deep 275*  
*Rombo Deep 275*  
*Cannè Deep 275*



---

---

NATURAL GRAIN

*Plain Bottle 262*  
*Rhombus Bottle 262*  
*Cannette Bottle 262*  
*Liscia Bottle 262*  
*Rombo Bottle 262*  
*Cannè Bottle 262*



---

---

NATURAL GRAIN

- Plain Lamb 208*
- Rhombus Lamb 208*
- Cannette Lamb 208*
- Liscia Lamb 208
- Rombo Lamb 208
- Cannè Lamb 208

# VINTAGE

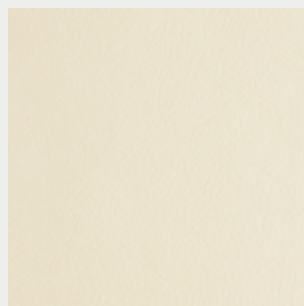
CAT. B LEATHER

CAT. B PELLE

*\*\* Quilted finishing not available\*\**  
*\*\* Non disponibile con finitura trapuntata\*\**

*Natural grain leather, nabuk handstained, mat lightened effect made by first quality European bulls. Resistant to oil and water spills. Thickness mm 1.*

Pelle fiore ritoccato, grana naturale, nabuccato, effetto schiarente opaco realizzata su tori europei di prima scelta, resistente ai liquidi a base oleosa e acquosa. Spessore mm 1.



---

---

VINTAGE

*Plain 01*  
Liscia 01



---

---

VINTAGE

*Plain 31*  
Liscia 31



---

---

VINTAGE

*Plain 32*  
Liscia 32



---

---

VINTAGE

*Plain 36*  
Liscia 36



---

---

VINTAGE

*Plain 27*  
Liscia 27

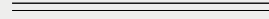


---

---

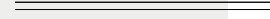
VINTAGE

*Plain 34*  
Liscia 34



VINTAGE

*Plain 06*  
Liscia 06



VINTAGE

*Plain 28*  
Liscia 28



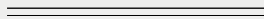
VINTAGE

*Plain 14*  
Liscia 14



VINTAGE

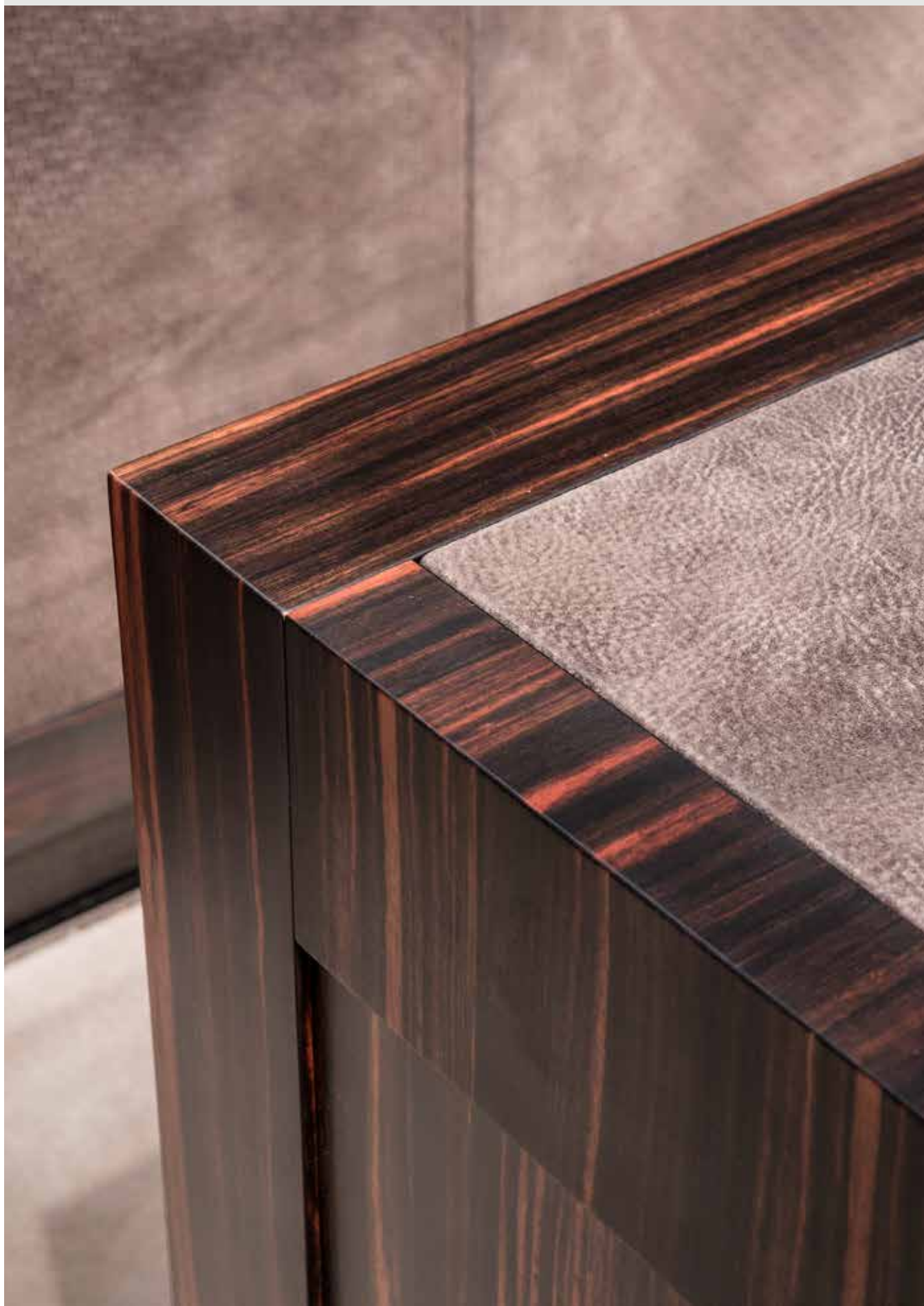
*Plain 10*  
Liscia 10



VINTAGE

*Plain 39*  
Liscia 39

**DENIM**  
VINTAGE LEATHER



# DENIM

CAT. B LEATHER

CAT. B PELLE

*\*\* Quilted finishing not available\*\**  
*\*\* Non disponibile con finitura trapuntata\*\**

*Natural grain leather, nabuk handstained, mat lightened effect made by first quality European bulls. Resistant to oil and water spills. Thickness mm 1.*

Pelle fiore ritoccato, grana naturale, nabuccato, effetto schiarente opaco realizzata su tori europei di prima scelta, resistente ai liquidi a base oleosa e acquosa. Spessore mm 1.



---

---

DENIM

*Plain Blu 50*  
*Liscia Blu 50*



---

---

DENIM

*Plain Jeans 45*  
*Liscia Jeans 45*



---

---

DENIM

*Plain Crete 47*  
*Liscia Crete 47*



---

---

DENIM

*Plain Brown 46*  
*Liscia Brown 46*



---

---

DENIM

*Plain Grey 48*  
*Liscia Grey 48*



---

---

DENIM

*Plain Tobacco 42*  
*Liscia Tobacco 42*

# ECOLEATHER

ECOLEATHER

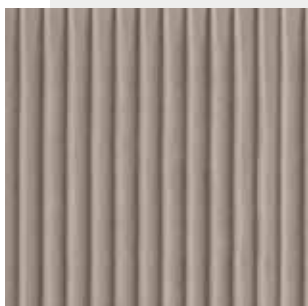
ECOPELLE

CAT. A Plain  
CAT. A Rhombus  
CAT. A Cannette  
CAT. A Liscia  
CAT. A Rombo  
CAT. A Cannè

*Made of PU / PVC on cotton satin. It has a "full grain leather" look, a soft and pleasant touch and a grain that is highlighted in a contrasting light opacity.*

*The delicate coloring that focuses on natural colors, together with the resistance to abrasion and fire, make this article the ideal item for elegant and sophisticated environments, both in domestic and contract use.*

Realizzato in PVC/PU su raso di cotone presenta un aspetto tipo "pelle pieno fiore", con una mano morbida e piacevole ed una grana che si evidenzia in un leggerissimo contrasto di opacità. La coloritura delicata e calibrata sui colori naturali, assieme alle caratteristiche di resistenza all'abrasione ed al fuoco, rendono l'articolo ideale per ambienti eleganti e raffinati, sia domestici che contract.



---

---

ECOLEATHER

*Plain 4.H.4  
Rhombus 4.H.4  
Cannette 4.H.4  
Liscia 4.H.4  
Rombo 4.H.4  
Cannè 4.H.4*

---

---

ECOLEATHER

*Plain 4.G.7  
Rhombus 4.G.7  
Cannette 4.G.7  
Liscia 4.G.7  
Rombo 4.G.7  
Cannè 4.G.7*



---

---

ECOLEATHER

- Plain 4.G.5*
- Rhombus 4.G.5*
- Cannette 4.G.5*
- Liscia 4.G.5*
- Rombo 4.G.5*
- Cannè 4.G.5*

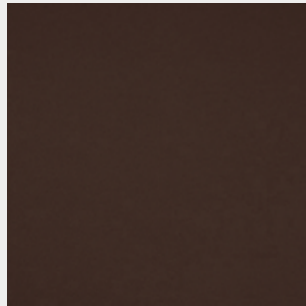
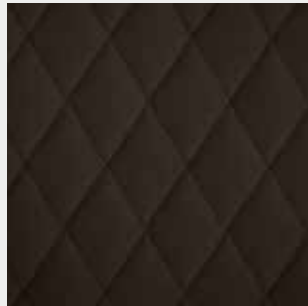
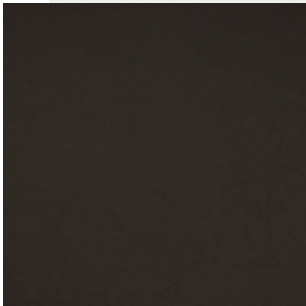


---

---

ECOLEATHER

- Plain 5.G.U*
- Rhombus 5.G.U*
- Cannette 5.G.U*
- Liscia 5.G.U*
- Rombo 5.G.U*
- Cannè 5.G.U*



---

---

ECOLEATHER

- Plain 5.H.1*
- Rhombus 5.H.1*
- Cannette 5.H.1*
- Liscia 5.H.1*
- Rombo 5.H.1*
- Cannè 5.H.1*



---

---

ECOLEATHER

- Plain 5.B.C*
- Rhombus 5.B.C*
- Cannette 5.B.C*
- Liscia 5.B.C*
- Rombo 5.B.C*
- Cannè 5.B.C*





---

---

ECOLEATHER

*Plain 7.E.L*  
*Rhombus 7.E.L*  
*Cannette 7.E.L*  
*Liscia 7.E.L*  
*Rombo 7.E.L*  
*Cannè 7.E.L*

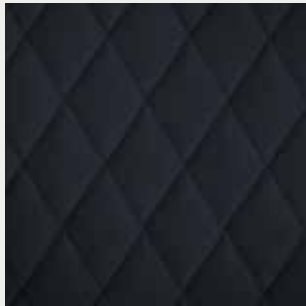
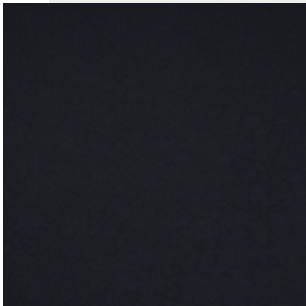


---

---

ECOLEATHER

*Plain 6.M.4*  
*Rhombus 6.M.4*  
*Cannette 6.M.4*  
*Liscia 6.M.4*  
*Rombo 6.M.4*  
*Cannè 6.M.4*



---

---

ECOLEATHER

*Plain 8.H.3*  
*Rhombus 8.H.3*  
*Cannette 8.H.3*  
*Liscia 8.H.3*  
*Rombo 8.H.3*  
*Cannè 8.H.3*

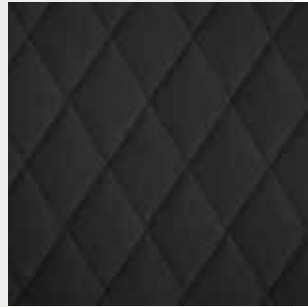
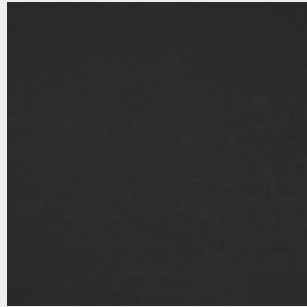
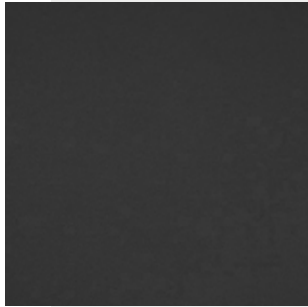


---

---

ECOLEATHER

*Plain 2.E.B*  
*Rhombus 2.E.B*  
*Cannette 2.E.B*  
*Liscia 2.E.B*  
*Rombo 2.E.B*  
*Cannè 2.E.B*

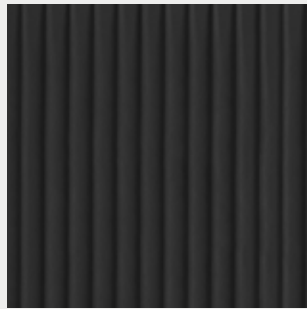


---

---

ECOLEATHER

- Plain 2.D.G*
- Rhombus 2.D.G*
- Cannette 2.D.G*
- Liscia 2.D.G*
- Rombo 2.D.G*
- Cannè 2.D.G*



---

---

ECOLEATHER

- Plain 2.E.2*
- Rhombus 2.E.2*
- Cannette 2.E.2*
- Liscia 2.E.2*
- Rombo 2.E.2*
- Cannè 2.E.2*

# VELVET

VELVET  
VELLUTO

CAT. A Plain  
CAT. B Quilted Rhombus  
CAT. B Quilted Cannette  
CAT. A Unito  
CAT. B Rombo trapuntato  
CAT. B Cannè trapuntato

Composition Composizione

100% POLYESTER

Width Altezza

140 cm

Weight Peso

430 gr/m

Martindale

50.000 cycles

Cleaning Instructions Istruzioni di lavaggio



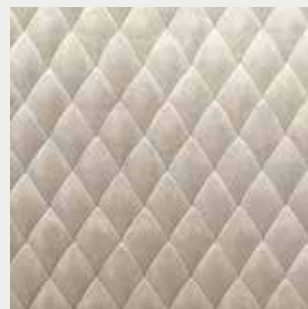
Country of origin Paese d'origine  
ITA



---

VELVET

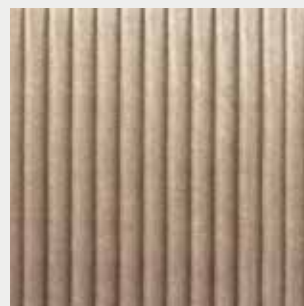
Plain White Ros 101  
Rhombus White Ros 101  
Cannette White Ros 101  
Unito White Ros 101  
Rombo White Ros 101  
Cannè White Ros 101



---

VELVET

Plain Cream Sam 01  
Rhombus Cream Sam 01  
Cannette Cream Sam 01  
Unito Cream Sam 01  
Rombo Cream Sam 01  
Cannè Cream sam 01



---

VELVET

Plain Champagne Sam 13  
Rhombus Champagne Sam 13  
Cannette Champagne Sam 13  
Unito Champagne Sam 13  
Rombo Champagne Sam 13  
Cannè Champagne Sam 13

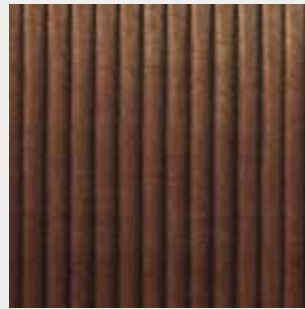


---

---

VELVET

- Plain Lion Sam 02*
- Rhombus Lion Sam 02*
- Cannette Lion Sam 02*
- Unito Lion Sam 02*
- Rombo Lion Sam 02*
- Cannè Lion Sam 02*



---

---

VELVET

- Plain Teja Sam 12*
- Rhombus Teja Sam 12*
- Cannette Teja Sam 12*
- Unito Teja Sam 12*
- Rombo Teja Sam 12*
- Cannè Teja Sam 12*



---

---

VELVET

- Plain Khaki Sam 03*
- Rhombus Khaki Sam 03*
- Cannette Khaki Sam 03*
- Unito Khaki Sam 03*
- Rombo Khaki Sam 03*
- Cannè Khaki Sam 03*



---

---

VELVET

- Plain Honey Ros 103*
- Rhombus Honey Ros 103*
- Cannette Honey Ros 103*
- Unito Honey Ros 103*
- Rombo Honey Ros 103*
- Cannè Honey Ros 103*



---

---

VELVET

*Plain Rose Ros 107*  
*Rhombus Rose Ros 107*  
*Cannette Rose Ros 107*  
*Unito Rose Ros 107*  
*Rombo Rose Ros 107*  
*Cannè Rose Ros 107*

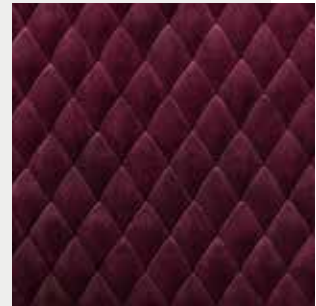


---

---

VELVET

*Plain Cipria Ros 130*  
*Rhombus Cipria Ros 130*  
*Cannette Cipria Ros 130*  
*Unito Cipria Ros 130*  
*Rombo Cipria Ros 130*  
*Cannè Cipria Ros 130*

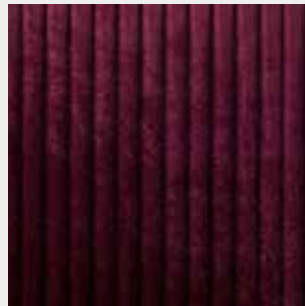


---

---

VELVET

*Plain Lavanda Ros 132*  
*Rhombus Lavanda Ros 132*  
*Cannette Lavanda Ros 132*  
*Unito Lavanda Ros 132*  
*Rombo Lavanda Ros 132*  
*Cannè Lavanda Ros 132*



---

---

VELVET

*Plain Wine Sam 06*  
*Rhombus Wine Sam 06*  
*Cannette Wine Sam 06*  
*Unito Wine Sam 06*  
*Rombo Wine Sam 06*  
*Cannè Wine Sam 06*

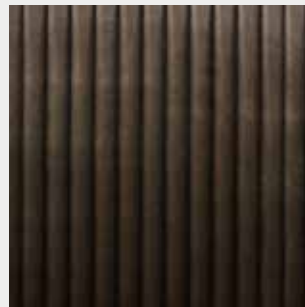


---

---

VELVET

*Plain Bordeaux Sam 05*  
*Rhombus Bordeaux Sam 05*  
*Cannette Bordeaux Sam 05*  
*Unito Bordeaux Sam 05*  
*Rombo Bordeaux Sam 05*  
*Cannè Bordeaux Sam 05*

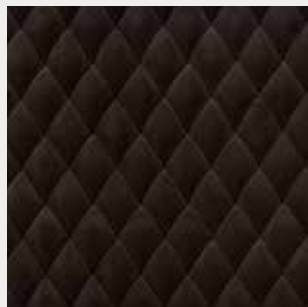


---

---

VELVET

*Plain Chocolate Sam 04*  
*Rhombus Chocolate Sam 04*  
*Cannette Chocolate Sam 04*  
*Unito Chocolate Sam 04*  
*Rombo Chocolate Sam 04*  
*Cannè Chocolate Sam 04*

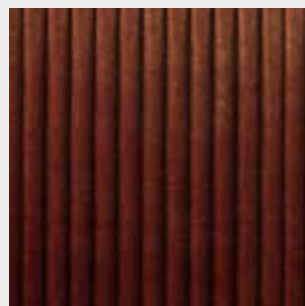


---

---

VELVET

*Plain Brown Ros 123*  
*Rhombus Brown Ros 123*  
*Cannette Brown Ros 123*  
*Unito Brown Ros 123*  
*Rombo Brown Ros 123*  
*Cannè Brown Ros 123*



---

---

VELVET

*Plain Corallo Ros 126*  
*Rhombus Corallo Ros 126*  
*Cannette Corallo Ros 126*  
*Unito Corallo Ros 126*  
*Rombo Corallo Ros 126*  
*Cannè Corallo Ros 126*

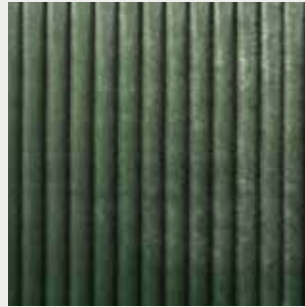


---

---

VELVET

*Plain Zafferano Ros 135*  
*Rhombus Zafferano Ros 135*  
*Cannette Zafferano Ros 135*  
*Unito Zafferano Ros 135*  
*Rombo Zafferano Ros 135*  
*Cannè Zafferano Ros 135*



---

---

VELVET

*Plain Salvia Ros 116*  
*Rhombus Salvia Ros 116*  
*Cannette Salvia Ros 116*  
*Unito Salvia Ros 116*  
*Rombo Salvia Ros 116*  
*Cannè Salvia Ros 116*



---

---

VELVET

*Plain Smeraldo Ros 118*  
*Rhombus Smeraldo Ros 118*  
*Cannette Smeraldo Ros 118*  
*Unito Smeraldo Ros 118*  
*Rombo Smeraldo Ros 118*  
*Cannè Smeraldo Ros 118*

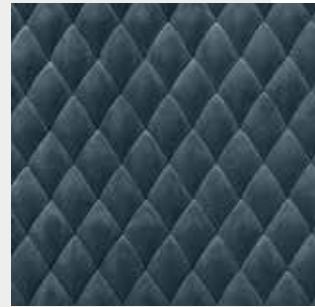


---

---

VELVET

*Plain Light Blue Sam 14*  
*Rhombus Light Blue Sam 14*  
*Cannette Light Blue Sam 14*  
*Unito Light Blue Sam 14*  
*Rombo Light Blue Sam 14*  
*Cannè Light Blue Sam 14*



---

---

VELVET

*Plain Safira Sam 09*  
*Rhombus Safira Sam 09*  
*Cannette Safira Sam 09*  
*Unito Safira Sam 09*  
*Rombo Safira Sam 09*  
*Cannè Safira Sam 09*

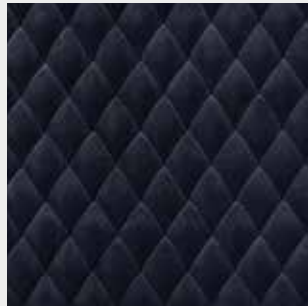


---

---

VELVET

*Plain Dark Blue Sam 10*  
*Rhombus Dark Blue Sam 10*  
*Cannette Dark Blue Sam 10*  
*Unito Dark Blue Sam 10*  
*Rombo Dark Blue Sam 10*  
*Cannè Dark Blue Sam 10*

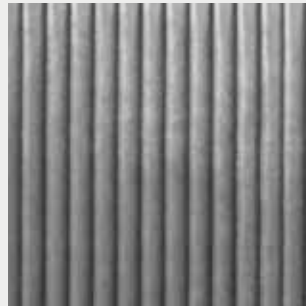


---

---

VELVET

*Plain Deep Blue Sam 11*  
*Rhombus Deep Blue Sam 11*  
*Cannette Deep Blue Sam 11*  
*Unito Deep Blue Sam 11*  
*Rombo Deep Blue Sam 11*  
*Cannè Deep Blue Sam 11*



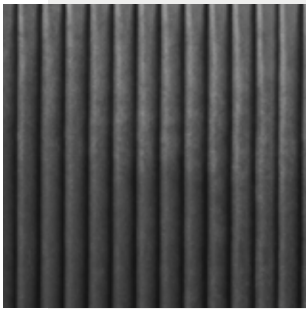
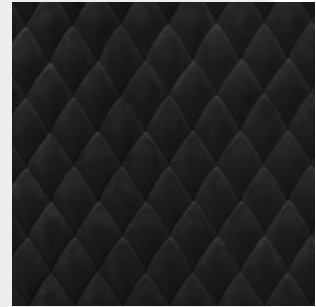
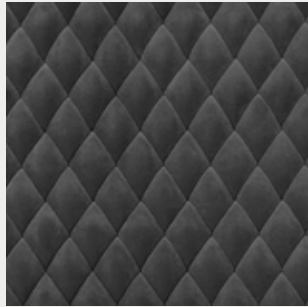
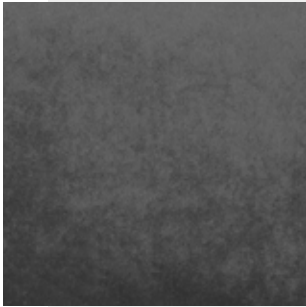
---

---

VELVET

*Plain Pearl Ros 109*  
*Rhombus Pearl Ros 109*  
*Cannette Pearl Ros 109*  
*Unito Pearl Ros 109*  
*Rombo Pearl Ros 109*  
*Cannè Pearl Ros 109*



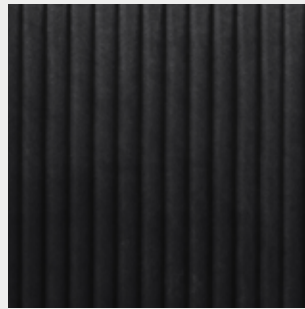


---

---

VELVET

- Plain Anthracite Ros 138*
- Rhombus Anthracite Ros 138*
- Cannette Anthracite Ros 138*
- Unito Anthracite Ros 138*
- Rombo Anthracite Ros 138*
- Cannè Anthracite Ros 138*



---

---

VELVET

- Plain Black Sam 08*
- Rhombus Black Sam 08*
- Cannette Black Sam 08*
- Unito Black Sam 08*
- Rombo Black Sam 08*
- Cannè Black Sam 08*

# NUAGE

CAT B. LUXURY VELVET  
CAT. B VELLUTO LUXURY

*Composition* Composizione  
60% VI, 31% CO, 9% POLYESTER

*Width* Altezza  
140 cm

*Weight* Peso  
680 gr/m

*Martindale Flock*  
25.000 cycles

*Martindale Velvet*  
80.000 cycles

*Cleaning Instructions* Istruzioni di lavaggio



*Country of origin* Paese d'origine  
ITA



*Kana Armchair in Nuage 511 Velvet*  
Kana Poltrona in velluto Nuage 511



---

NUAGE

*Velvet 511*  
Velluto 511



---

NUAGE

*Velvet 34*  
Velluto 34

# SHINE

CAT. C EXCLUSIVE FABRICS

CAT. C TESSUTI EXCLUSIVE

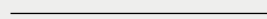
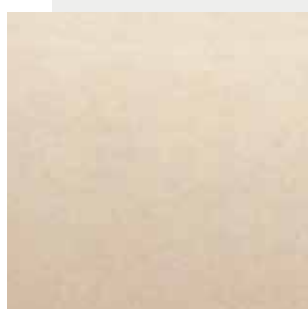
Composition Composizione

63 % CV 26 % CO 11 % SE (PILE 85% CV 15% SE)

Martindale

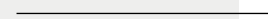
50.000 cycles

Cleaning Instructions Istruzioni di lavaggio



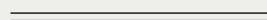
SHINE  
WHITE LAMINA ORO

007



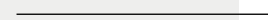
SHINE  
BEIGE LAMINA ORO

016



SHINE  
SMOKE LAMINA ORO

015



SHINE  
BOIS DE ROSE LAMINA ORO

029



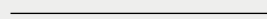
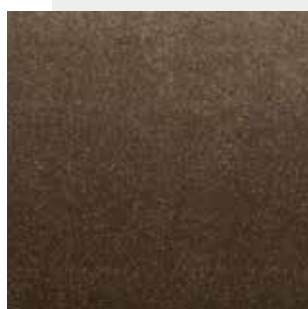
SHINE  
ROSE LAMINA ORO

012



SHINE  
LAGO LAMINA ORO

021



SHINE  
FANGO LAMINA ORO

009

## AFRODITE

CAT. C EXCLUSIVE FABRICS

CAT. C TESSUTI EXCLUSIVE

Composition Composizione

46% CV 29% CO 12% LI 8% PAN 2% PES

2% SE 1% PA

Martindale 35.000 cycles

Cleaning Instructions Istruzioni di lavaggio



## PRINCE

CAT. C EXCLUSIVE FABRICS

CAT. C TESSUTI EXCLUSIVE

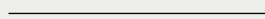
Composition Composizione

56% CO 30% CV 14% LI

Martindale

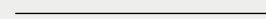
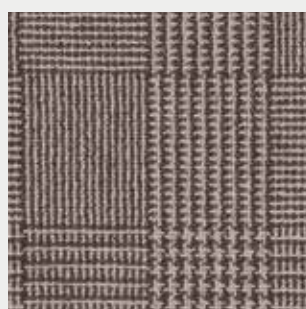
35.000 cycles

Cleaning Instructions Istruzioni di lavaggio



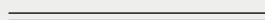
AFRODITE  
AVORIO

001



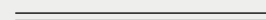
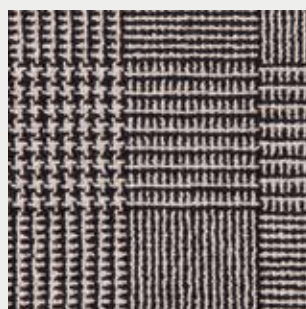
PRINCE  
DUNA

002



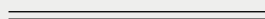
AFRODITE  
FICELLE

002



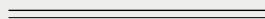
PRINCE  
MARCASSIN

003



AFRODITE  
JUTE

003



AFRODITE  
QUASINERO

004

# BOUCLÉ

CAT B. LUXURY FABRICS  
CAT. B TESSUTI LUX

Composition Composizione  
56 % CO, 22 % PES, 18 % PC, 4 % PA

Martindale  
40.000 cycles

Cleaning Instructions Istruzioni di lavaggio

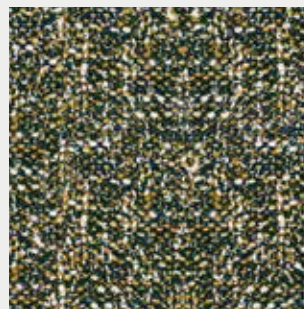


Country of origin Paese d'origine  
ITA



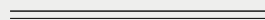
BOUCLÉ

0249



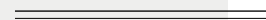
BOUCLÉ

0789



BOUCLÉ

0681



BOUCLÉ

1111



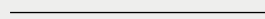
BOUCLÉ

0905



BOUCLÉ

0133



BOUCLÉ

0897



BOUCLÉ

0573

# OCEAN

CAT B. LUXURY FABRICS  
CAT. B TESSUTI LUX

Composition Composizione

76 % CO, 24 % PA

Martindale

50.000 cycles

Cleaning Instructions Istruzioni di lavaggio



Country of origin Paese d'origine

ITA



OCEAN

0438



OCEAN

0634



OCEAN

0536



OCEAN

0830



OCEAN

0928

# GRID

CAT B. LUXURY FABRICS

CAT. B TESSUTI LUX

*Composition* Composizione

36 % VI, 34 % CO, 10 % PES, 10 % LI, 10 % PC

*Width* Altezza

140 cm

*Weight* Peso

580 gr/m

*Martindale*

40.000 cycles

*Cleaning Instructions* Istruzioni di lavaggio



*Country of origin* Paese d'origine

ITA

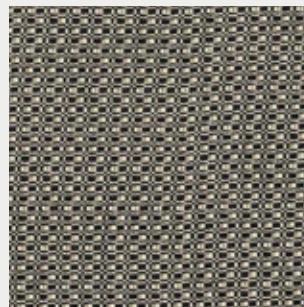


*Karab Armchair in Grid 0744 Fabric*  
Karab Poltroncina in tessuto Grid 0744



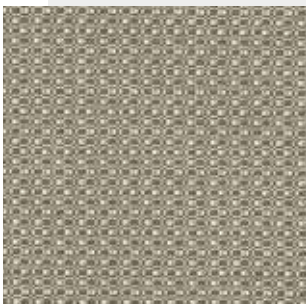
GRID

0253



GRID

0744



GRID

0589



GRID

0685

# TWICE

CAT B. LUXURY FABRICS

CAT. B TESSUTI LUX

*Composition* Composizione

50 % CO, 25 % PC, 15 % PA, 10 % PES

*Width* Altezza

140 cm

*Weight* Peso

500 gr/m

*Martindale*

50.000 cycles

*Cleaning Instructions* Istruzioni di lavaggio



*Country of origin* Paese d'origine

ITA



---

---

TWICE

2737



---

---

TWICE

2431



---

---

TWICE

2839



---

---

TWICE

2023



---

---

TWICE

3247



# HEXAGONAL

CAT B. LUXURY FABRICS

CAT. B TESSUTI LUX

*Composition* Composizione

35% VI, 32% CO, 13% PL, 10% LI, 10% AC

*Width* Altezza

140 cm

*Weight* Peso

500 gr/m

*Martindale*

46.000 cycles

*Cleaning Instructions* Istruzioni di lavaggio



*Country of origin* Paese d'origine

ITA



---

---

HEXAGONAL

0158



---

---

HEXAGONAL

0350



---

---

HEXAGONAL

0298



---

---

HEXAGONAL

0405



---

---

HEXAGONAL

1237



---

---

HEXAGONAL

0953



---

---

HEXAGONAL

0865



*Audrey M in Hexagonal 0953 fabric*  
Audrey M in tessuto Hexagonal 0953

# GOLD

CAT. A POLYSILK

CAT. A POLISETA

*Composition* Composizione

Silk effect, 100% POLYESTER

*Width* Altezza

140 cm

*Weight* Peso

200 gr/m

*Martindale*

25.000 cycles

*Cleaning Instructions* Istruzioni di lavaggio



*Country of origin* Paese d'origine

ITA



POLYSILK

.GO 21



POLYSILK

.GO 1003



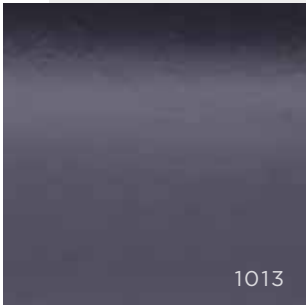
POLYSILK

.GO 11

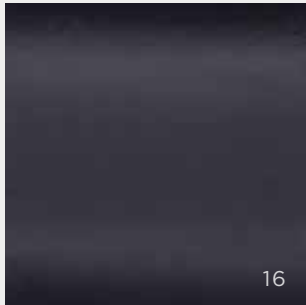


POLYSILK

.GO 104



1013



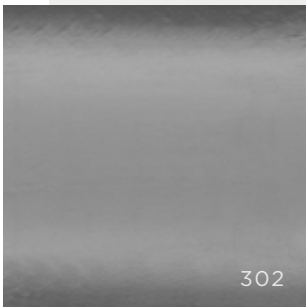
16



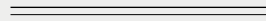
307



17

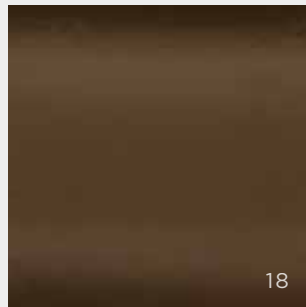


302



POLYSILK

.GO 1013  
.GO 16  
.GO 302

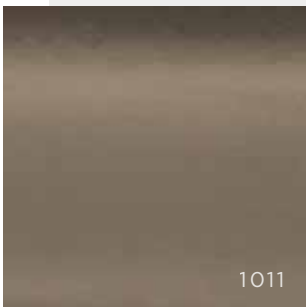


18



POLYSILK

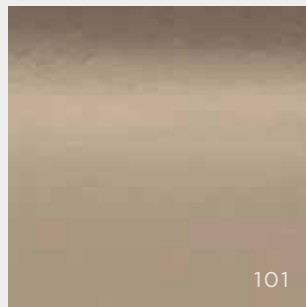
.GO 307  
.GO 17  
.GO 18



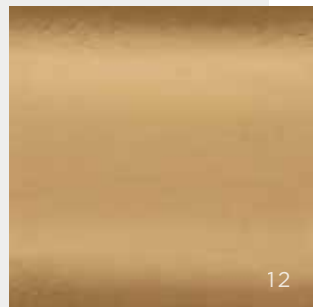
1011



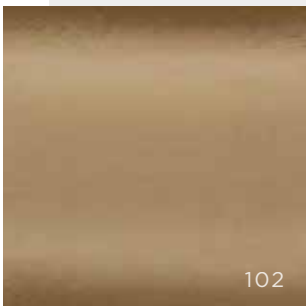
2001



101



12

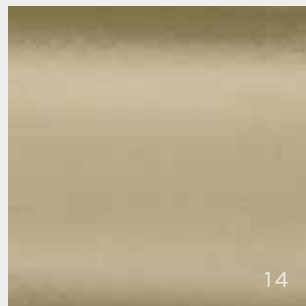


102



POLYSILK

.GO 1011  
.GO 2001  
.GO 102



14



POLYSILK

.GO 101  
.GO 12  
.GO 14

# CAPITAL®

ITALIAN EXCLUSIVE INTERIORS

1. Tutte le dimensioni riportate nella sezione tecnica sono in cm, sono approssimative e con possibilità di variazioni (tolleranza del 2%). L'azienda si riserva il diritto di effettuare modifiche e aggiornamenti tecnico-produttivi al presente catalogo senza preavviso.

Le immagini e i colori dei prodotti stampati nel catalogo sono indicativi.

2. La rappresentazione delle finiture non può garantire la piena conformità con le finiture reali.

3. I materiali utilizzati in ogni prodotto sono di alta qualità, lavorati da personale esperto e controllati accuratamente lungo tutto il processo produttivo.

Eventuali segni riscontrati nei rivestimenti in pelle, nelle essenze e nei marmi non devono essere considerati difetti, ma caratteristica naturale del materiale stesso.

4. Nell'ambito di un continuo processo di miglioramento dei propri prodotti, Capital si riserva il diritto di modificare gli stessi senza alcun preavviso.

5. Le foto e i testi contenuti nel presente elaborato non sono contrattualmente vincolanti.

6. I modelli sono esclusivi di Atmosphaera srl. Nessuna parte di questo catalogo può essere riprodotta in alcuna forma senza l'autorizzazione scritta di Atmosphaera srl.

*1. All dimensions in the technical section are expressed in cm, light changes are possible (tolerance of 2%). The company reserves the right to make modifications and technical upgrades without notification. Images and color of products in the catalogue are approximate.*

*2. The finishes presented in the catalogue are not fully corresponding to the real ones.*

*3. In each product we use high-quality materials, handled by experienced specialists and controlled accurately all along the productive process*

*Any mark you could find on leathers, woods or marble surfaces, can not be considered defects but natural characteristic of the materials.*

*4. In the continuous process of improving its products, Capital reserves the right to modify them without any notice.*

*5. Photos and tests in the catalogue are not legally binding.*

*6. All items are Atmosphaera srl exclusive design. No pictures of this catalogue can be reproduced in any form without written permission from Atmosphaera srl.*





CAPITAL®

a brand of

ATMOSPHERA SRL

Via Cesare Battisti 68, 35010 Limena (PD) ITALY  
[www.capitalcollection.it](http://www.capitalcollection.it) - [info@capitalcollection.it](mailto:info@capitalcollection.it)  
T. +39 049 8657045