



OXFORD™ PREMIUM

Oxford™ Premium is an elegant and iconic relaunch of the classic Oxford chair by Arne Jacobsen, initially produced by Fritz Hansen in 1962. Watch for an array of nine new, soothing Fritz Hansen Selections colours, in a lovely soft fabric or leather. To the chair we have added a subtle pattern of clean, horizontal lines. Adding extra comfort is a special foam that makes the chair all the more inviting to sit on for hours on end. The Fritz Hansen fabric selection is created to visually enhance the characteristics of the Oxford chair and the high quality materials are chosen for an expressive design that will age with beauty.



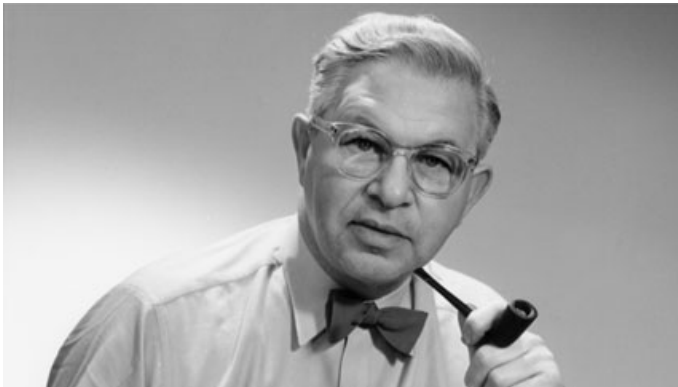
REPUBLIC OF **Fritz Hansen**®

PRODUCT DESCRIPTION

The Oxford™ Premium is a series of armchairs. All chairs are available with a low or medium back height. The comfort of the Oxford Premium is created by three layers of foam constructed to fit perfectly to the body. The comfort is further improved by a wider seat - 2 cm wider than the Oxford™ Classic. The Oxford Premium is also 2,5 cm higher than the Oxford Classic. The double stitching on the edge of the chair marks the characteristic shape of the chair and gives symmetry to the front and the back side. The subtle horizontal lines on the front side create a visual light impression. The shell is made of laminated veneer covered with PU foam and upholstered in fabric or leather. The armrests and base (5-star) are die-cast aluminium either satin polished or black lacquered. The base can be configured with either double-casters with aluminium/black plastic housing (height adjustment incl. tilt mechanism) or black-grey plastic toes (with fixed seat height). The accessories include mirror chromed base and armrests, leather arm pad, automatic return mechanism, hard or soft castors with or without brake action.

DESIGN

Arne Jacobsen, 1962. Redesigned in 2016.



ARNE JACOBSEN 1902-1971

The collaboration between Arne Jacobsen and Fritz Hansen dates back to 1934. It was not until 1952 however that the team got its breakthrough with the Ani™. It was succeeded by Series 7™ in 1955, thereby enabling both Jacobsen and Fritz Hansen to write their names into furniture history.

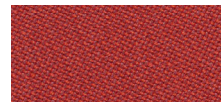
Arne Jacobsen was incredibly productive, both as an architect and a designer. At the end of the 1950s he designed the SAS Royal Hotel in Copenhagen, also designing the Egg™, the Swan™, the Swan Sofa™ and Series 3300™ for the same project.



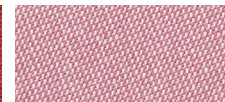
UPHOLSTERY

Oxford™ Premium is presented in a Fritz Hansen Selection of colours in the fabric Rime as well as two selected colours from the leather type Soft that accentuate the design of the chair.

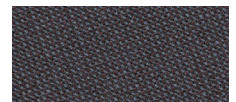
The Fritz Hansen Selection colours are:



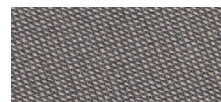
BRIGHT RED/DARK RED
FABRIC: RIME 551



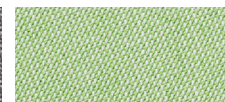
BRIGHT RED/WHITE
FABRIC: RIME 621



BROWN/DARK BLUE
FABRIC: RIME 691



DARK GREY/BEIGE
FABRIC: RIME 641



GREEN/WHITE
FABRIC: RIME 921



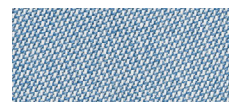
LIME GREEN/WHITE
FABRIC: RIME 911



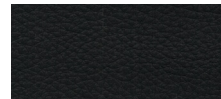
BRIGHT BLUE/BROWN
FABRIC: RIME 781



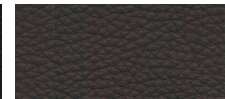
BLACK/GREY
FABRIC: RIME 741



BLUE/WHITE
FABRIC: RIME 721



BLACK
LEATHER: SOFT



BLACK BROWN
LEATHER: SOFT

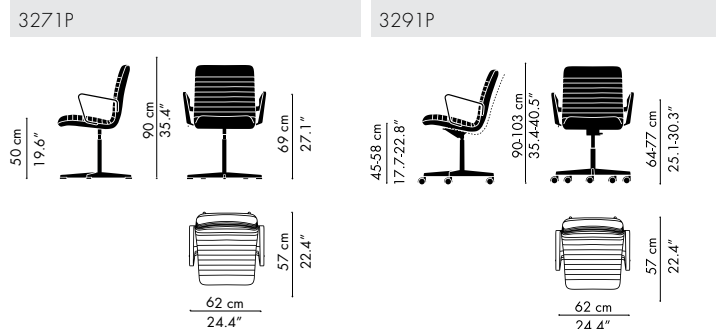
Oxford Premium is also available in the following selection of fabrics:

Fritz Hansen Colours: The Fritz Hansen Colours are created exclusively by Republic of Fritz Hansen's own design team and consist of serene pale pink, warm and earthy terracotta orange and finally deep ocean blue.

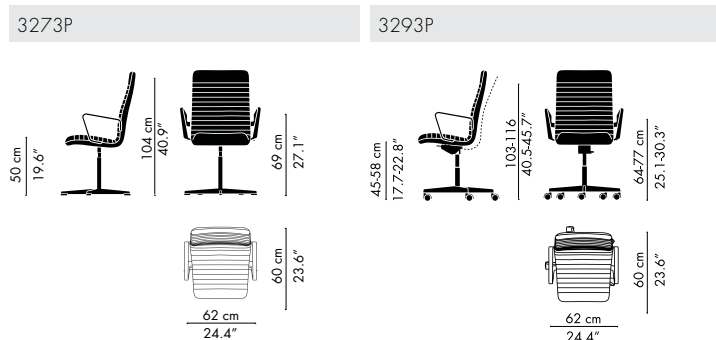
Fabrics: Capture, Diablo, Fame, Fiord, Divina, Divina Melange, Divina MD, Hallingdal, Sunniva and Tonus.

VARIATIONS & DIMENSIONS

OXFORD™ PREMIUM - LOW BACK



OXFORD™ PREMIUM - MEDIUM BACK



WARRANTY

A five-year warranty against manufacturing defects in standard products (materials and workmanship). Wear, tear and damage to the product are not covered under this warranty. Claims from end users under the guarantee must be submitted to the vendor from whom the product was purchased. All measurements are indicative.

STANDARD WARRANTY:

5 years

MY REPUBLIC EXTENDED WARRANTY:

5 years: Height-adjustable, Tilt, Swivel, Castors, Fabric, Leather: Soft.

10 years: Base, Shell, Armrest.

To obtain an extended warranty offered through My Republic the products should be registered online. Go to www.fritzhanzen.com/myrepublic to register.



ENVIRONMENTAL PRODUCT INFORMATION

Suitable as a conference chair, desk chair, guest chair and lounge chair.

MATERIALS

Shell

The shell is made of moulded veneer comprising seven layers of beech and two layers of poplar. The shell is upholstered with moulded polyurethane (PUR) foam and covered with fabric or leather.

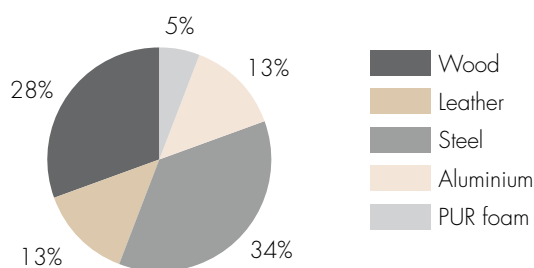
Base & armrests

The base and armrests are made of satin polished aluminium. Chairs with a fixed seat height are provided with toes in black-grey synthetic material. Chairs with height adjustment are provided with tilt mechanism and double castors with aluminium caps.

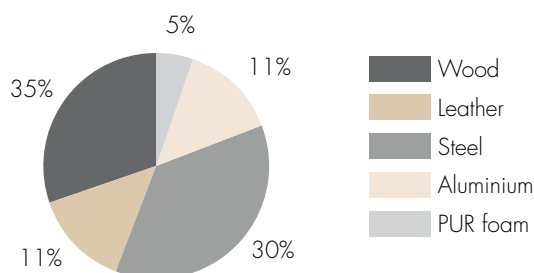
Materials in %

The below figures illustrate the weight allocation between the different materials used. Items with a weight <1% of the total product weight are not included in the figures below. The upholstery percentage may vary depending on the upholstery type.

Models with castors and no armrests:



Models with castors and armrests:



PACKAGING MATERIAL

The chairs are shipped in cardboard. All packaging material can be recycled.

REPAIR, DISPOSAL AND REUSE

In case of repair and disposal the chairs can be disassembled into two parts (shell and base). The aluminium base and other metal parts can be recycled. Check local regulations for recycling in your area and whether there is potential for reuse.

MANUFACTURING PROCESSES

Suppliers

Before Fritz Hansen enters into a cooperation with a supplier, their environmental stance is examined as part of the company's quality and environmental management systems.

Chrome surface treatment

Fritz Hansen uses both trivalent chromium (chrome 3) and hexavalent chromium (chrome 6) for chromium plating. Fritz Hansen will convert to solely using trivalent chromium (chrome 3) when the capacity in the Industry allows it.

Metal

Production scrap (steel and aluminium) is collected for recycling.

Foam

Remnants from foam production are granulated, wherever possible, for recycling.

MANAGEMENT SYSTEMS

Environmental Systems

We are aware of our environmental responsibilities. Therefore, in the autumn of 2004 Fritz Hansen obtained the ISO 14001 certification in the environmental management system. The certification is a guarantee to our customers and the authorities that we comply with the requirements of the ISO 14001:2015 standard.

Quality System

Fritz Hansen is also certified according to the quality system ISO 9001:2015.

Employee Health and Safety

Fritz Hansen aims at meeting or exceeding OSHA standards.

ENVIRONMENTAL PRODUCT CERTIFICATION

GreenGuard

The OXFORD™ chair is GreenGuard Gold certified. GreenGuard certification is an emission certification for indoor air quality. Products with ultra-low-emitting materials can achieve GreenGuard Gold.

FSC® C120451

All Oxford™ chairs from 2016 are FSC® (Forest Stewardship Council®) certified. This FSC certification ensure the wood is from forests that are managed with respect for the ecological, social and ethical standards.

LONG LIFETIME

A long lifetime of a piece of furniture is an important environmental factor. Fritz Hansen aims to obtain a long lifetime through timeless design and strict requirements for strength and durability. The chair complies with the requirements for EN 15373:2008 Safety, strength, durability and stability for non domestic seating, general use.

MORE INFORMATION

Please visit www.fritzhanzen.com for additional environmental information and to download our Perspective on Sustainability & Corporate Environmental Policy.