

# Trampoliere H54 ø50 Coffee Table

design Roberto Paoli, 2013

Coffee table with three-spoke base in painted steel and height 54cm.  
Top ø50 in melamine or HPL.



## Colors and Materials

### Structure



White Steel



Black Steel



Sand Steel



Brown Steel



Grafite Steel



Pastel Yellow Steel



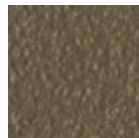
Light blue steel



Ocean Blue Steel



Bronze Steel



Fango Steel



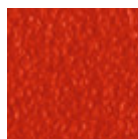
Light Grey Steel



Ocher Steel



Facepowder Pink  
Steel

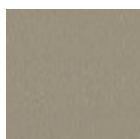


Red steel



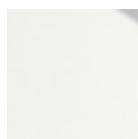
Sage Green Steel

### Coating

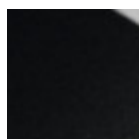


Melamine

8 Colors



White hpl black core



Black hpl



Hpl Cemento



Hpl Corten



White hpl white core

## Dimensions

---

## Volumetric Details

**Weight** 14.5 Kg

**Volume** 0.15 mc

**Package** 2

Image not found or type unknown

	<b>A (cm)</b>	<b>B (cm)</b>	<b>C (cm)</b>
	(inch)	(inch)	(inch)
<b>H54 (cm)</b>	54	50	50
(inch)	21.3	19.7	19.7