

# Concave Ø150 Table

design Nicola Bonriposi, 2019

Fixed table with steel base and crystalceramic top.



## Colors and Materials

### Structure



White Steel



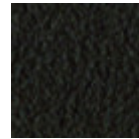
Sand Steel



Grafite Steel



Black Steel



Brown Steel



Pastel Yellow Steel



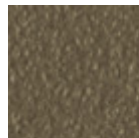
Light blue steel



Ocean Blue Steel



Bronze Steel



Fango Steel



Light Grey Steel



Ocher Steel



Facepowder Pink Steel

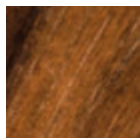


Red steel

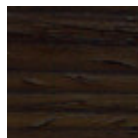


Sage Green Steel

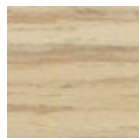
### Coating



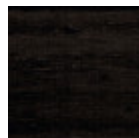
Veneered flamed walnut



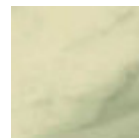
Veneered wood dark oak



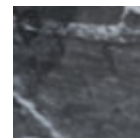
Veneered wood natural finish



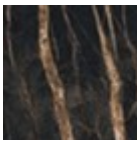
Black lacquered veneered wood



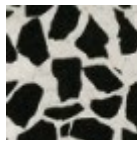
Crystalceramic with effect calacatta marble



Crystalceramic Glossy Black Greek Marble



Crystalceramic with effect noir desir marble



Venetian crystalceramic

---

## Dimensions

Dimensions

---

## Volumetric Details

**Weight** 190 Kg

**Volume** 0.8 mc

**Package** 2

Image not found or type unknown

	cm	inch
<b>A</b>	75	29.5
<b>B</b>	150	59.1
<b>C</b>	150	59.4

---

## Downloads

**3ds Concave (zip)** - [https://www.midj.com/images/uploads/resources/3ds-concave-round\\_1.zip](https://www.midj.com/images/uploads/resources/3ds-concave-round_1.zip)

**3D Autocad Concave (zip)** - <https://www.midj.com/images/uploads/resources/3d-concave-round-cad.zip>

**3D pCon Planner Concave (zip)** - <https://www.midj.com/images/uploads/resources/3d-concave-round-pcon.zip>

**3D Sketchup Concave (zip)** - <https://www.midj.com/images/uploads/resources/3d-concave-round-sketchup.zip>