

MIDJ
INITALY

Nenè round Table

design Paolo Vernier, 2013

Nenè round table available in two sizes: ø70 cm and ø80 cm.
Lacquered steel legs and top in melamine or hpl.



Colors and Materials

Structure



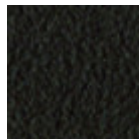
White Steel



Black Steel



Sand Steel



Brown Steel



Grafite Steel

Coating



Melamine

8 Colors



White hpl black core



Black hpl



Hpl Cemento



Hpl Corten



White hpl white core

Dimensions

Dimensions not found or type unknown

Dimensions

	A (cm)	B (cm)	C (cm)
	(inch)	(inch)	(inch)
ø70 (cm)	75	70	70
(inch)	29.5	27.6	27.6
ø80 (cm)	75	80	80
(inch)	29.5	31.5	31.5

Volumetric Details

Weight 19.5 Kg

Volume 0.25 mc

Package 3