



Pippi H65 / H75 Stool

design Roberto Paoli, 2019

Stool with four-leg base upholstered in fabric. Steel feet.

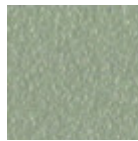


Colors and Materials

Structure



White Steel



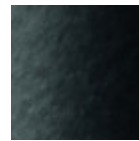
Sand Steel



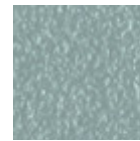
Pastel Yellow Steel



Grafite Steel



Black Steel



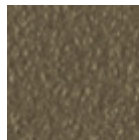
Light blue steel



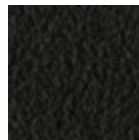
Ocean Blue Steel



Bronze Steel



Fango Steel



Brown Steel



Light Grey Steel



Ocher Steel



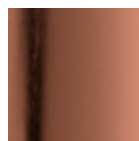
Facepowder Pink Steel



Red steel



Sage Green Steel

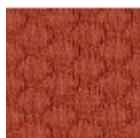


Pink Gold



Black Nickel

Coating



Visual Fabric

11 Colors

Dimensions

Volumetric Details

Weight 9 Kg

Volume 0.22 mc

Package 1

Image not found or type unknown

	A	B	C	
	(cm)	(cm)	(cm)	
	(inch)	(inch)	(inch)	
H65	76	44	49	65
(cm)	29.9	17.3	19.3	25.6
(inch)				
H75	86	44	49	75
(cm)	33.9	17.3	19.3	29.5
(inch)				

Downloads

[3D Pippi H75 \(zip\)](https://www.midj.com/images/uploads/resources/midj-pippi-h75-3d.zip) - <https://www.midj.com/images/uploads/resources/midj-pippi-h75-3d.zip>