



# Passepartout S M LG\_Q Chair

design Midj R&D, 2013

Stakable chair with four leg frame in chrome or lacquered steel. Shell in wood finish dark oak or light oak.



## Colors and Materials

### Structure



White Steel



Sand Steel



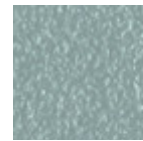
Pastel Yellow Steel



Grafite Steel



Black Steel



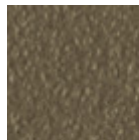
Light blue steel



Ocean Blue Steel



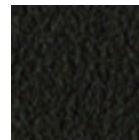
Bronze Steel



Fango Steel



Light Grey Steel



Brown Steel



Ocher Steel



Facepowder Pink  
Steel



Red steel

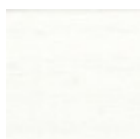


Sage Green Steel

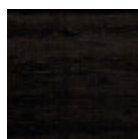


Chrome

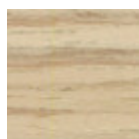
### Coating



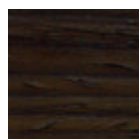
White lacquered  
veneered wood



Black lacquered  
veneered wood



Veneered wood  
natural finish



Veneered wood dark  
oak

## Dimensions

---

## Volumetric Details

**Weight** 6.5 Kg

**Volume** 0.25 mc

**Package** 1

Image not found or type unknown

	<b>cm</b>	<b>inch</b>
<b>A</b>	81	31.9
<b>B</b>	45	17.7
<b>C</b>	54	21.3
<b>D</b>	46	18.1