

**MIDJ**  
INITALY

# Nuvola H75 M CU Stool

H75 stool with steel legs and covered in hide.

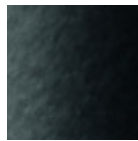


## Colors and Materials

### Structure



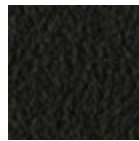
White Steel



Black Steel



Sand Steel



Brown Steel



Grafite Steel

### Coating



#### Hide

20 Colors

## Dimensions

Dimension not found or type unknown

Dimensions

	cm	inch
A	105	41.3
B	44	17.3
C	48	18.9
D	76	29.9

## Volumetric Details

**Weight** 9.5 Kg

**Volume** 0.23 mc

**Package** 1

## Materials Certifications

#### Hide

FIRE RESISTANCE:

Technical Bulletin 117/00 sez E part. 1

EN 1021 parte 1/94, parte 2/94

BS 5852/90

#### PROPRIETIES AND ADVANTAGES

The hide is a hygienic and very practical product: it resists to wear, it's impermeable to water but, at the same time, the hide wicks air and sweat. The hide is obtained from the skin of bovines breeds and slaughtered for food purposes and subsequently treated with chromium salts.

#### CLEANING INSTRUCTIONS

Use only a damp, non abrasive cloth; do not use products containing solvents or alcohol that may damage the surface. It is advisable to test an invisible area of the product before cleaning it all. For good preservation of the product purchased, it is inadvisable to expose it to direct sunlight that may alter its features and colours. Any surface imperfections are natural features of hide and guarantee that it is an original product.