

Suite CT 55x55 Coffee Table

design AtelierNanni, 2017

Coffee table with wooden four legs base. Top upholstered in hide or Tuscan hide.



Colors and Materials

Structure



Lacquered ash

9 Colors

Coating



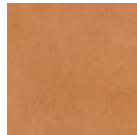
Hide

20 Colors



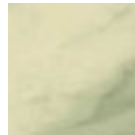
TK Hide

9 Colors



Tuscan Hide

3 Colors

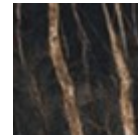


Ceramic with effect calacatta marble

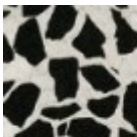
1 color



Black greek glossy marble ceramic



Noir desir glossy ceramic marble



Venetian glossy ceramic

Dimensions

Image not found or type unknown

Dimensions

	A (cm) (inch)	B (cm) (inch)	C (cm) (inch)
H30 (cm) (inch)	30 11.8	55 21.7	55 21.7
H40 (cm) (inch)	40 15.7	55 21.7	55 21.7

	A (cm)	B (cm)	C (cm)
	(inch)	(inch)	(inch)
H50 (cm)	50	55	55
(inch)	19.7	21.7	21.7

Volumetric Details

Weight 6 Kg

Volume 0.2 mc

Package 1

Materials Certifications

Hide

FIRE RESISTANCE:

Technical Bulletin 117/00 sez E part. 1

EN 1021 parte 1/94, parte 2/94

BS 5852/90

PROPRIETIES AND ADVANTAGES

The hide is a hygienic and very practical product: it resists to wear, it's impermeable to water but, at the same time, the hide wicks air and sweat. The hide is obtained from the skin of bovines breeds and slaughtered for food purposes and subsequently treated with chromium salts.

CLEANING INSTRUCTIONS

Use only a damp, non abrasive cloth; do not use products containing solvents or alcohol that may damage the surface. It is advisable to test an invisible area of the product before cleaning it all. For good preservation of the product purchased, it is inadvisable to expose it to direct sunlight that may alter its features and colours. Any surface imperfections are natural features of hide and guarantee that it is an original product.

Materials Certifications

TK Hide

PROPRIETIES AND ADVANTAGES

The hide is a hygienic and very practical product: it resists to wear, it's impermeable to water but, at the same time, the hide wicks air and sweat. The hide is obtained from the skin of bovines breeds and slaughtered for food purposes and subsequently treated with chromium salts.

CLEANING INSTRUCTIONS

Use only a damp, non abrasive cloth; do not use products containing solvents or alcohol that may damage the surface. It is advisable to test an invisible area of the product before cleaning it all. For good preservation of the product purchased, it is inadvisable to expose it to direct sunlight that may alter its features and colours. Any surface imperfections are natural features of hide and guarantee that it is an original product.

Materials Certifications

Tuscan Hide

Tuscan Hide does not fear to get aged since the oldest it gets the more unique it becomes.

It is a material deriving from animal's leather which suffer a process called "vegetable tanning" with natural tannins and with the help of some products biologically compatible whether for the dyeing or for the finishing.

Any possible imperfection, sign, scar, stain of the Tuscan hide surface are a natural characteristics which guarantees its originality.