

# Guapa Lamp Floor

design Franco Poli, 2014

Floor lamp with indirect light. Base in lacquered steel. Diffuser in hide with the upper ring in lacquered steel. The transparent cable is fitted with the ON/OFF switch.

The lamp is available also as suspension lamp.

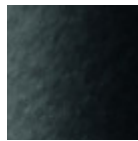


## Colors and Materials

### Structure



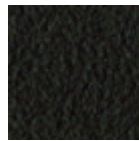
White Steel



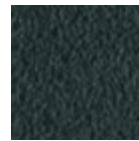
Black Steel



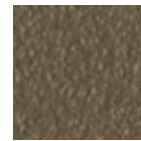
Sand Steel



Brown Steel



Grafite Steel



Fango Steel



Bronze Steel



Pastel Yellow Steel



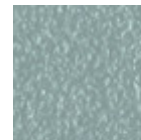
Ocher Steel



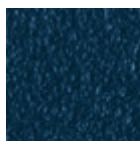
Red steel



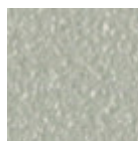
Sage Green Steel



Light blue steel



Ocean Blue Steel



Light Grey Steel



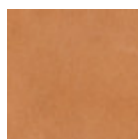
Facepowder Pink Steel

### Coating



TK Hide

9 Colors



Tuscan Hide

3 Colors

## Dimensions

---

## Volumetric Details

**Weight** 14 Kg

**Volume** 0.47 mc

**Package** 2

Image not found or type unknown

	cm	inch
<b>A</b>	160	63
<b>B</b>	57	22.4
<b>C</b>	57	22.4

## Materials Certifications

### TK Hide

#### PROPRIETIES AND ADVANTAGES

The hide is a hygienic and very practical product: it resists to wear, it's impermeable to water but, at the same time, the hide wicks air and sweat. The hide is obtained from the skin of bovines breeds and slaughtered for food purposes and subsequently treated with chromium salts.

#### CLEANING INSTRUCTIONS

Use only a damp, non abrasive cloth; do not use products containing solvents or alcohol that may damage the surface. It is advisable to test an invisible area of the product before cleaning it all. For good preservation of the product purchased, it is unadvisable to expose it to direct sunlight that may alter its features and colours. Any surface imperfections are natural features of hide and guarantee that it is an original product.

## Materials Certifications

### Tuscan Hide

Tuscan Hide does not fear to get aged since the oldest it gets the more unique it becomes.

It is a material deriving from animal's leather which suffer a process called "vegetable tanning" with natural tannins and with the help of some products biologically compatible whether for the dyeing or for the finishing.

Any possible imperfection, sign, scar, stain of the Tuscan hide surface are a natural characteristics which guarantees its originality.