

Apelle DP CU Armchair

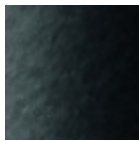
design Beatriz Sempere, 2013

Armchair with four ways base in lacquered steel. It comes with white wheels combined with the white base or with chrome wheels with black edge combined with the black base. Seat and backrest in hide.



Colors and Materials

Structure



Black Steel



White Steel



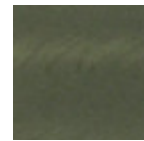
Sand Steel



Brown Steel

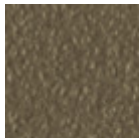


Grafite Steel



Industrial Steel

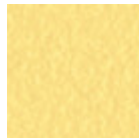
1 color



Fango Steel



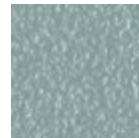
Bronze Steel



Pastel Yellow Steel



Ocher Steel



Light blue steel



Ocean Blue Steel



Light Grey Steel

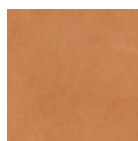


Facepowder Pink Steel

Coating



Hide
20 Colors



Tuscan Hide
3 Colors

Dimensions

Volumetric Details

Weight 11 Kg

Volume 0.33 mc

Package 1

Image not found or type unknown

	cm	inch
A	84	33.1
B	60	23.6
C	55	21.7
D	43	16.9
E	65	25.6

Downloads

[Apelle catalog \(pdf\)](https://www.midj.com/images/uploads/resources/apelle-catalogo-2017.pdf) - <https://www.midj.com/images/uploads/resources/apelle-catalogo-2017.pdf>

[3D Autocad Apelle DP CU \(zip\)](https://www.midj.com/images/uploads/resources/3d-midj-apelle-dp-cu-autocad.zip) - <https://www.midj.com/images/uploads/resources/3d-midj-apelle-dp-cu-autocad.zip>

[3ds Apelle DP CU \(zip\)](https://www.midj.com/images/uploads/resources/3ds-midj-apelle-dp-cu.zip) - <https://www.midj.com/images/uploads/resources/3ds-midj-apelle-dp-cu.zip>

[3D pCon Planner Apelle DP CU \(zip\)](https://www.midj.com/images/uploads/resources/3d-midj-apelle-dp-cu-pcon.zip) - <https://www.midj.com/images/uploads/resources/3d-midj-apelle-dp-cu-pcon.zip>

[3D SketchUp Apelle DP CU \(zip\)](https://www.midj.com/images/uploads/resources/3d-midj-apelle-dp-cu-sketchup.zip) - <https://www.midj.com/images/uploads/resources/3d-midj-apelle-dp-cu-sketchup.zip>

[3D obj Apelle DP CU \(zip\)](https://www.midj.com/images/uploads/resources/3d-midj-apelle-dp-cu-obj.zip) - <https://www.midj.com/images/uploads/resources/3d-midj-apelle-dp-cu-obj.zip>

Materials Certifications

Hide

FIRE RESISTANCE:

Technical Bulletin 117/00 sez E part. 1

EN 1021 parte 1/94, parte 2/94

BS 5852/90

PROPRIETIES AND ADVANTAGES

The hide is a hygienic and very practical product: it resists to wear, it's impermeable to water but, at the same time, the hide wicks air and sweat. The hide is obtained from the skin of bovines breeds and slaughtered for food purposes and subsequently treated with chromium salts.

CLEANING INSTRUCTIONS

Use only a damp, non abrasive cloth; do not use products containing solvents or alcohol that may damage the surface. It is advisable to test an invisible area of the product before cleaning it all. For good preservation of the product purchased, it is inadvisable to expose it to direct sunlight that may alter its features and colours. Any surface imperfections are natural features of hide and guarantee that it is an original product.

Materials Certifications

Tuscan Hide

Tuscan Hide does not fear to get aged since the oldest it gets the more unique it becomes.

It is a material deriving from animal's leather which suffer a process called "vegetable tanning" with natural tannins and with the help of some products biologically compatible whether for the dyeing or for the finishing.

Any possible imperfection, sign, scar, stain of the Tuscan hide surface are a natural characteristics which guarantees its originality.