

Ola H65 M Stool

design Paolo Vernier, 2016

Stool with painted steel structure and base, suitable for outdoor use.

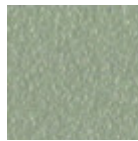


Colors and Materials

Structure



White Steel



Sand Steel



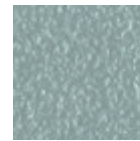
Pastel Yellow Steel



Grafite Steel



Black Steel



Light blue steel



Ocean Blue Steel



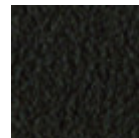
Bronze Steel



Fango Steel



Light Grey Steel



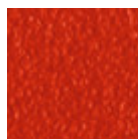
Brown Steel



Ocher Steel



Facepowder Pink
Steel

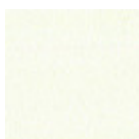


Red steel

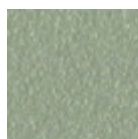


Sage Green Steel

Coating



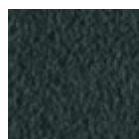
White Steel



Sand Steel



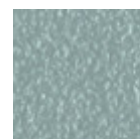
Pastel Yellow Steel



Grafite Steel



Black Steel



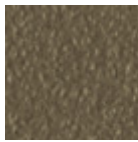
Light blue steel



Ocean Blue Steel



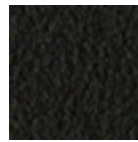
Bronze Steel



Fango Steel



Light Grey Steel



Brown Steel



Ocher Steel



Facepowder Pink Steel



Red steel



Sage Green Steel

Dimensions

Dimensions

Volumetric Details

Weight 9 Kg

Volume 0.28 mc

Package 1

Image not found or type unknown

	cm	inch
A	90	35.4
B	50	19.7
C	51	20.1
D	65	25.6