

# Ola P M Armchair

design Paolo Vernier, 2016

Armchair Ola with structure and seat in painted steel suitable for outdoor use.

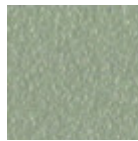


## Colors and Materials

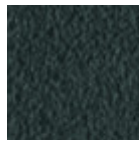
### Structure



White Steel



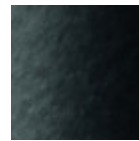
Sand Steel



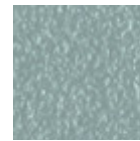
Grafite Steel



Pastel Yellow Steel



Black Steel



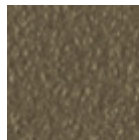
Light blue steel



Ocean Blue Steel



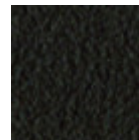
Bronze Steel



Fango Steel



Light Grey Steel



Brown Steel



Ocher Steel



Facepowder Pink Steel

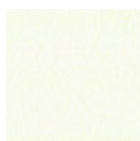


Red steel

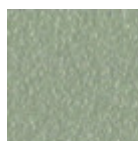


Sage Green Steel

### Coating



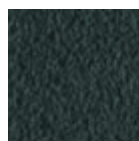
White Steel



Sand Steel



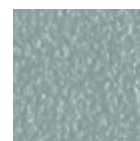
Pastel Yellow Steel



Grafite Steel



Black Steel



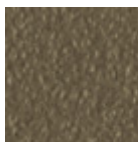
Light blue steel



Ocean Blue Steel



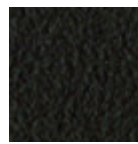
Bronze Steel



Fango Steel



Light Grey Steel



Brown Steel



Ocher Steel



Facepowder Pink Steel



Red steel



Sage Green Steel

## Dimensions

Dimensions

## Volumetric Details

**Weight** 7.25 Kg

**Volume** 0.32 mc

**Package** 1

Image not found or type unknown

	cm	inch
<b>A</b>	82	32.3
<b>B</b>	52	20.5
<b>C</b>	54	21.3
<b>D</b>	45	17.7
<b>E</b>	65	25.6