

Design by: Marc Sadler



Struttura in metallo ricoperto in vetro, pendagli in cristallo, illuminazione LED.

Metal frame covered with glass, crystal pendants, LED lighting system.

Metallstruktur mit transparentem Glas bedeckt, Kristall-Gehänge, LED Lichtsystem.

Structure métallique recouverte de verre, pendentifs en cristal, éclairage LED

МЕТАЛЛИЧЕСКИЙ КАРКАС, ПОКРЫТЫЙ СТЕКЛОМ, ПОДВЕСЫ ИЗ ХРУСТАЛЯ, СВЕТОДИОДНОЕ ОСВЕЩЕНИЕ.



G03
Gold Frame
Transparent Glass



V32
Red Frame
Red Glass



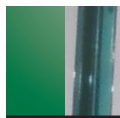
G03
Gold Frame
Orange Glass



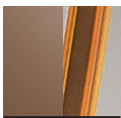
G04
Chrome Frame
Red Glass



G14
Burnished brass
Transparent Glass



V61
Green frame
Green Glass



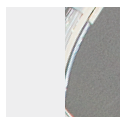
V82
Brown Frame
Orange Glass



G04
Chrome frame
Green Glass



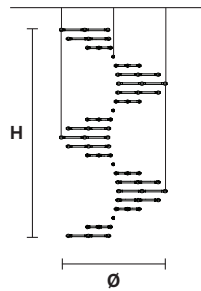
G04
Chrome Frame
Transparent Glass



V95
White frame
Transparent Glass

RAQAM P4

CE



H 220 cm / 86.61"
Ø 130 cm / 51.18"

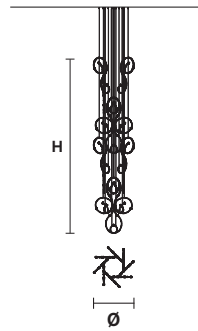
LED x 307 W CRI>80
3000 K - 32640 lm

Dimmable: PUSH+DMX
on request

MODULO 7x32

RAQAM R3

CE



H 530 cm / 208.66"
Ø 125 cm / 49.21"

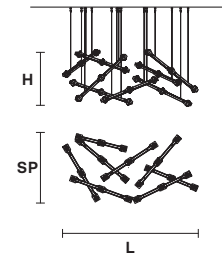
LED x 204.8W CRI>80
3000 K 21760 lm

Dimmable: PUSH+DMX
on request

MODULO 1x16

RAQAM N7

CE



H 50 cm / 19.68"
L 117 cm / 46.06"
SP 60 cm / 23.62"

LED x 76.8W CRI>80
3000 K 8160 lm

Dimmable: PUSH+DMX
on request

MODULO 7x8