



# Guapa CT S Coffee Table

design Sempere#Poli Design, 2014

Coffee table with structure available in chrome or lacquered steel. Top in hide.



## Colors and Materials

### Structure



White Steel



Black Steel



Sand Steel



Brown Steel



Grafite Steel



Fango Steel



Bronze Steel



Pastel Yellow Steel



Ocher Steel



Red steel



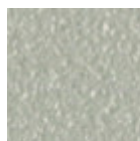
Sage Green Steel



Light blue steel



Ocean Blue Steel



Light Grey Steel



Facepowder Pink Steel



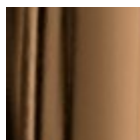
Chrome



Pink Gold

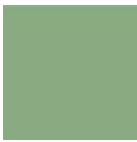


Black Nickel

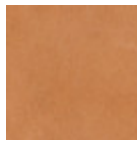


Golden Bronze

### Coating



**Hide**  
20 Colors



**Tuscan Hide**  
3 Colors

## Dimensions

Dimensions

## Volumetric Details

**Weight** 5 Kg  
**Volume** 0.12 mc  
**Package** 2

Image not found or type unknown

	A (cm) (inch)	B (cm) (inch)	C (cm) (inch)
<b>Guapa CT-S</b>	52	42	36
<b>(cm)</b>	20.5	16.5	14.2
<b>(inch)</b>			

## Downloads

[Guapa CT S 3D \(zip\)](https://www.midj.com/images/uploads/resources/guapa-cts-3d.zip) - <https://www.midj.com/images/uploads/resources/guapa-cts-3d.zip>

## Materials Certifications

**Hide**

**FIRE RESISTANCE:**  
Technical Bulletin 117/00 sez E part. 1  
EN 1021 parte 1/94, parte 2/94  
BS 5852/90

### PROPRIETIES AND ADVANTAGES

The hide is a hygienic and very practical product: it resists to wear, it's impermeable to water but, at the same time, the hide wicks air and sweat. The hide is obtained from the skin of bovines breeds and slaughtered for food purposes and subsequently treated with chromium salts.

### CLEANING INSTRUCTIONS

Use only a damp, non abrasive cloth; do not use products containing solvents or alcohol that may damage the surface. It is advisable to test an invisible area of the product before cleaning it all. For good preservation of the product purchased, it is unadvisable to expose it to direct sunlight that may alter its features and colours. Any surface imperfections are natural features of hide and guarantee that it is an original product.

## Materials Certifications

**Tuscan Hide**

Tuscan Hide does not fear to get aged since the oldest it gets the more unique it becomes. It is a material deriving from animal's leather which suffer a process called "vegetable tanning" with natural tannins and with the help of some products biologically compatible whether for the dyeing or for the finishing. Any possible imperfection, sign, scar, stain of the Tuscan hide surface are a natural characteristics which guarantees its originality.